

LELY

OPTIMO

type number
type number
numéro de type
Typnummer

vanaf serienummer
as from serial number
après numéro de série
ab Serienummer

280

4.1210.0010.1

972 - 0501

320

4.1219.0010.1
4.1219.0011.1
4.1219.0012.1
4.1219.0014.1
4.1219.0015.1

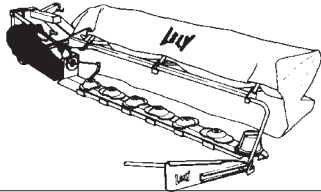
972 - 0501
993 - 0501
1003 - 0501
1010 - 0501
10113 - 0501

EMH2

Inhoud
Contents
Index
Inhalt

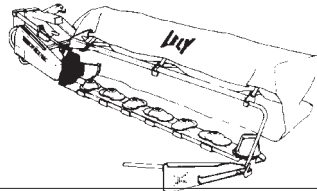
OPTIMO

pagina
page
page
Seite



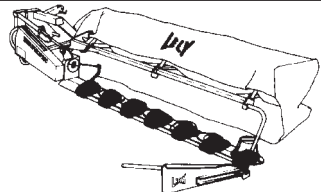
Snaaraandrijving
V-belt drive
Entraînement à courroies
Keilriemenantrieb

01



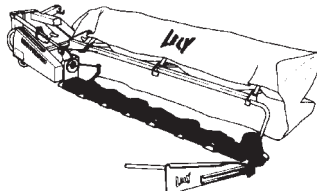
Tandwielkast
Gearbox
Boîte d'engrenages
Getriebe

02



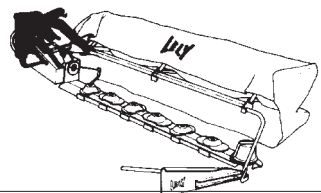
Maaielementen
Cutting units
Unités de fauchage
Mäh-Einheiten

03



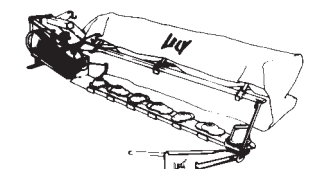
Maaibalk
Cutter bar
Barre de coupe
Mähbalken

04



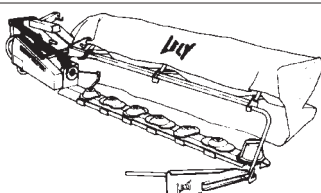
Driepuntsbok
Headstock
Tête d'attelage
Dreipunktturm

05



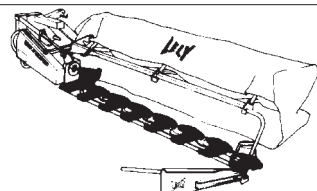
Freem + uitslagbeveiliging
Frame + anti-shock device
Châssis + dispositif anti-choc
Rahmen + Ausklinkvorrichtung

06



Hydraulische cilinder
Hydraulic ram
Vérin hydraulique
Hydraulikzylinder

07



Glijsloten + slijtplaten
Skids + wear plates
Patins + plaques d'usure
Kufen + Verschleissplatten

08

LELY

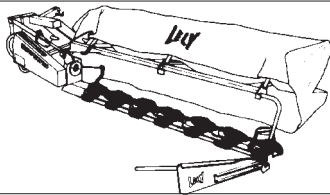
OPTIMO	type number type number numéro de type Typnummer	vanaf serienummer as from serial number après numéro de serie ab Seriennummer
280	4.1210.0010.1	972 - 0501
320	4.1219.0010.1 4.1219.0011.1 4.1219.0012.1 4.1219.0014.1 4.1219.0015.1	972 - 0501 993 - 0501 1003 - 0501 1010 - 0501 10113 - 0501

EMH2

Inhoud
Contents
Index
Inhalt

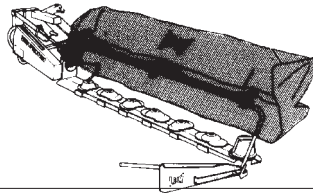
OPTIMO

pagina
page
page
Seite



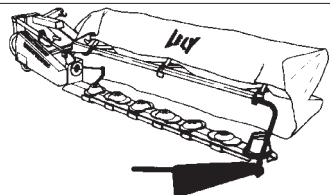
Maaibalkbescherming
Cutter bar protection
Protection-barre
Mähwerkschutz

09



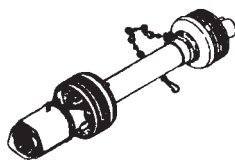
Beveiligingsfreem
Protection frame
Châssis de protection
Schutzrahmen

10



Zwadbord + eindsteun
Swath board + end support
Planche à andain + support final
Schwadbrett + Endstütze

11

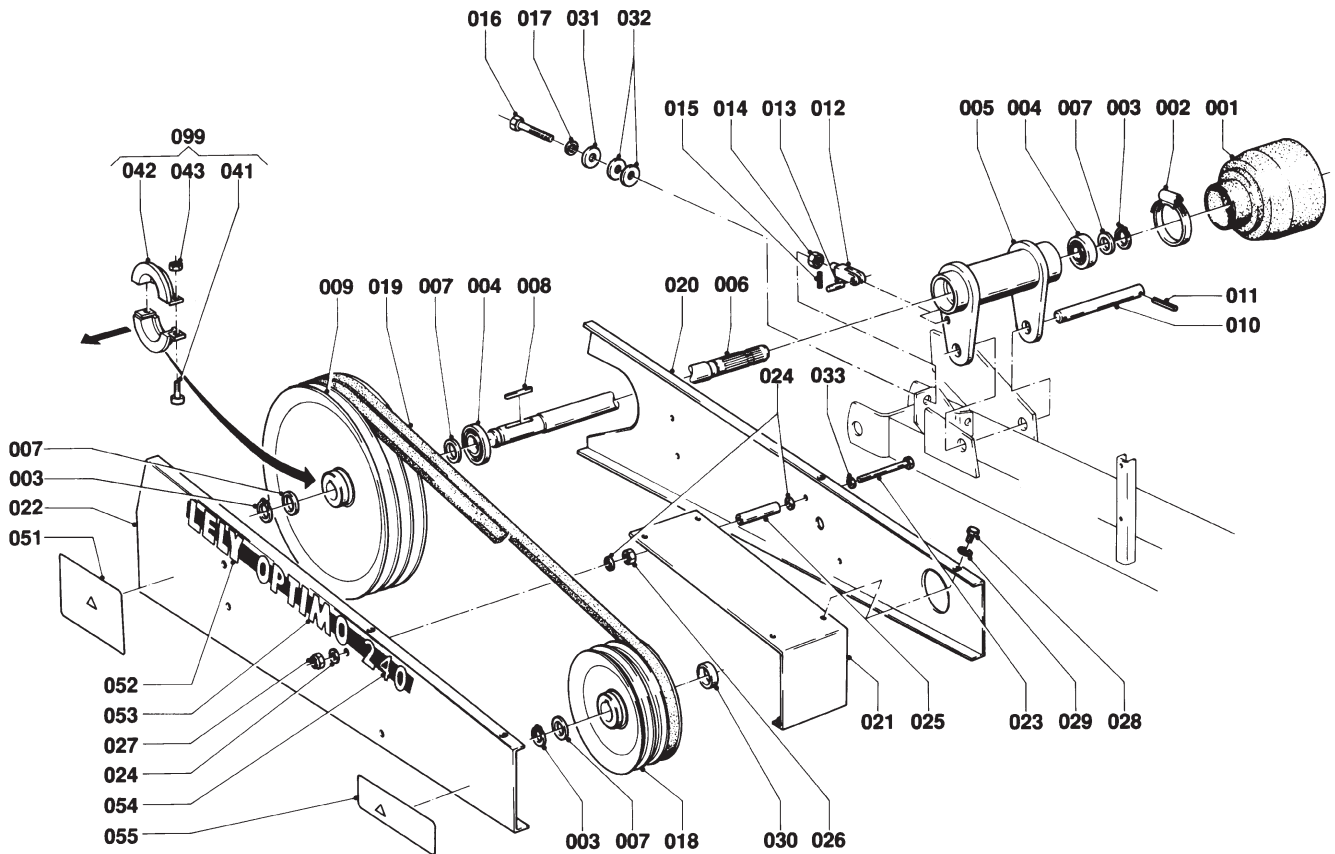
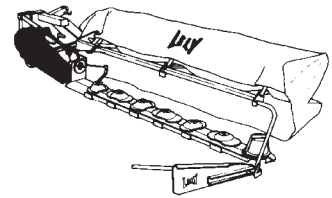


Koppelingsas
PTO shaft
Arbre de transmission
Gelenkwelle

12

LELY

OPTIMO	type number type number numéro de type Typnummer	vanaf serienummer as from serial number après numéro de série ab Seriennummer
280	4.1210.0010.1	972 - 0501
320	4.1219.0010.1	972 - 0501
320	4.1219.0011.1	993 - 0501
320	4.1219.0012.1	1003 - 0501



E001-09-01

REF.	ONDERDEELNR. PART NUMBER REFERENCE TEILNUMMER	AANTAL QUANTITY QUANTITE ANZAHL
------	--	--

001	9.1161.0014.0	1
002	9.1066.0010*0	1
003	9.1119.0019.5	3
004	9.1001.0087.2	2
005	4.1201.0522.0	1
006	4.1201.0498.0	1
007	9.1052.0006.3	4
008	9.1071.0037.1	1
009	4.1203.0527.0	1
010	4.1201.1478.0	1
011	9.1070.0023.2	2
012	9.1038.0006*3	1
013	4.1201.1471.0	1
014	9.1029.0008*0	1
015	9.1070.0018.4	2
016	9.1113.0273*6	1
017	9.1048.0012*6	1
018	4.1203.1497.0	1
019	9.1075.0003.5	4
020	9.1075.0012.0	4
021	4.1201.0500.0	1
022	4.1210.1493.0	1
023	9.1113.0143*2	4
024	9.1049.0018.4	12
025	4.1201.1463.0	4
026	9.1029.0005*4	4
027	9.1030.0004*2	4
028	9.1113.0013*5	6
029	9.1051.0001*6	6
030	4.1201.1496.0	1
031	9.1048.0041*0	1
032	9.1048.0067.5	2
033	9.1048.0047.6	4
041	9.1057.0003*2	2
042	4.1201.2310.0	2
043	9.1029.0004*3	2
051	9.1170.0124.3	1
052	9.1170.0253.6	1
053	9.1170.0255.1	1
054	9.1170.0259.5	1
055	9.1170.0270.2	1
099	4.1201.2300.0	1

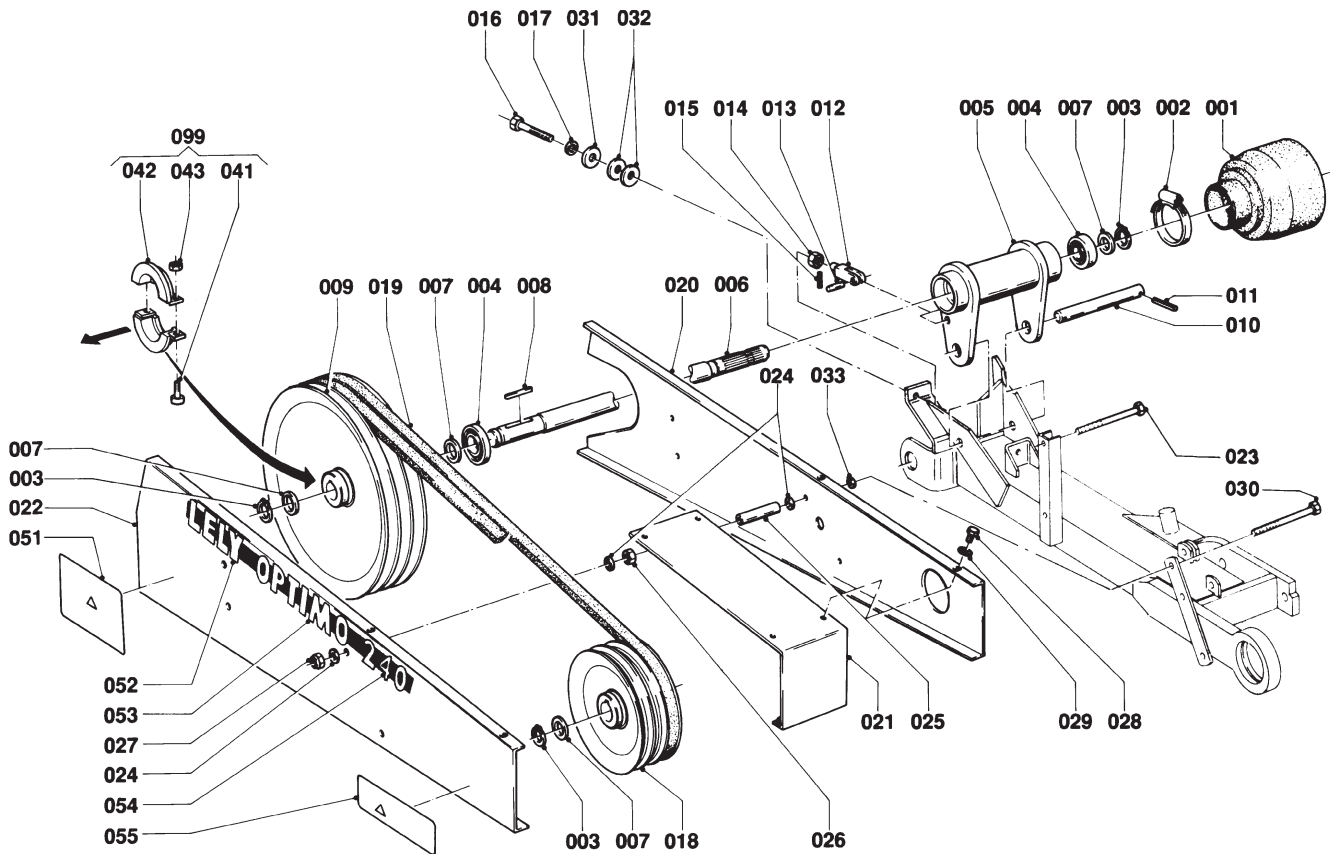
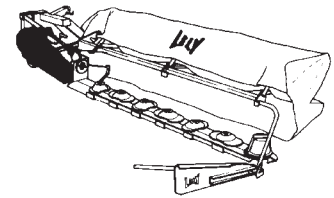
REF.	ONDERDEELNR. PART NUMBER REFERENCE TEILNUMMER	AANTAL QUANTITY QUANTITE ANZAHL
------	--	--

026	9.1029.0005*4	4
027	9.1030.0004*2	4
028	9.1113.0013*5	6
029	9.1051.0001*6	6
030	4.1201.1496.0	1
031	9.1048.0041*0	1
032	9.1048.0067.5	2
033	9.1048.0047.6	4
041	9.1057.0003*2	2
042	4.1201.2310.0	2
043	9.1029.0004*3	2
051	9.1170.0124.3	1
052	9.1170.0253.6	1
053	9.1170.0255.1	1
054	9.1170.0259.5	1
055	9.1170.0270.2	1
099	4.1201.2300.0	1

= REF. 041-043
Hulpstuk voor pulley-trekker
Attachment for pulley puller
Access. d' extracteur-poulie
Zubehör für Abzieher

LELY

OPTIMO	type number type number numéro de type Typnummer	vanaf serienummer as from serial number après numéro de série ab Seriennummer
320	4.1219.0012.1	1010 - 0501
320	4.1219.0014.1	1010 - 0501



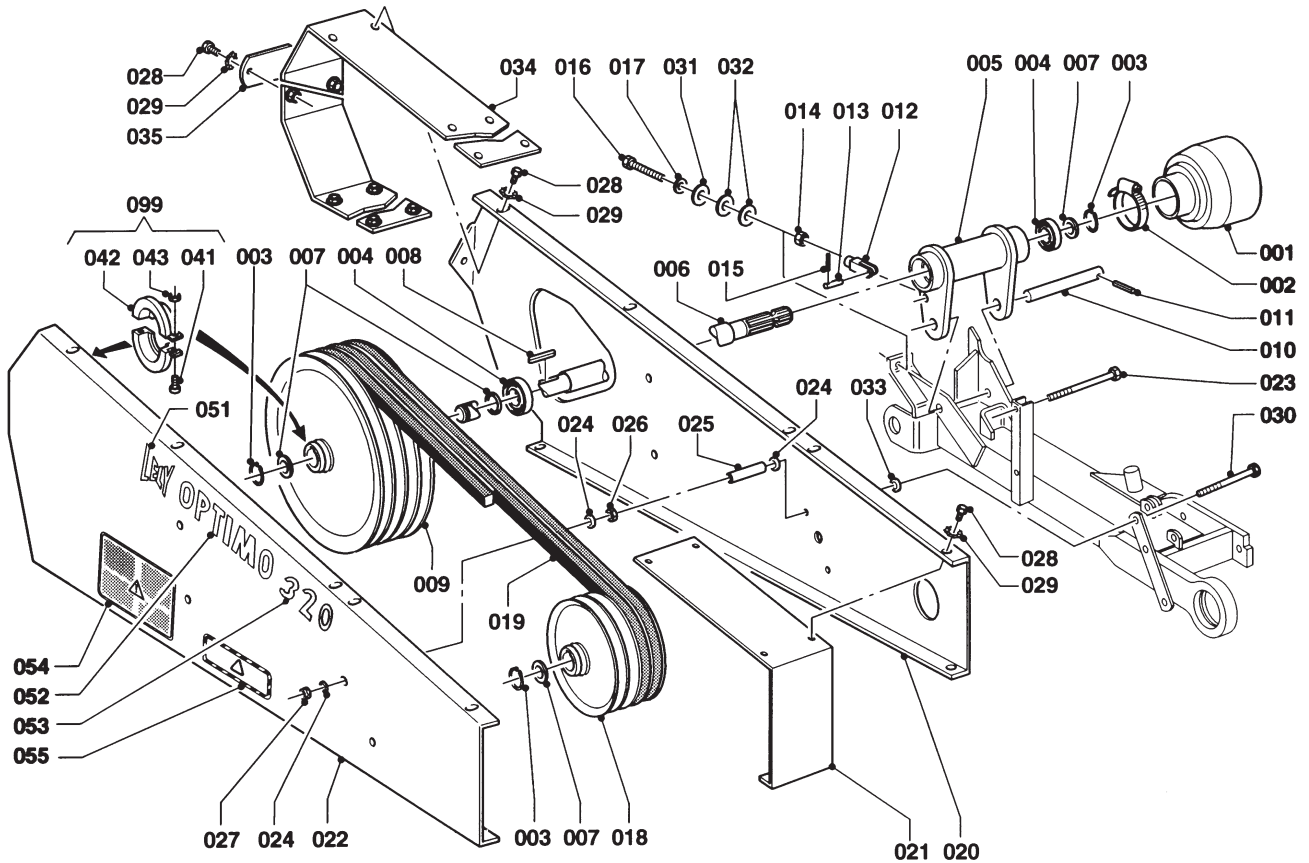
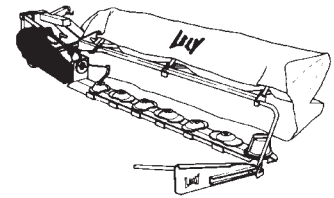
E001-09-11

REF.	ONDERDEELNR. PART NUMBER REFERENCE TEILNUMMER	AANTAL QUANTITY QUANTITE ANZAHL	
001	9.1161.0014.0	1	
002	9.1066.0010*0	1	Ø70-Ø90
003	9.1119.0019.5	3	35x2,50 DIN 471
004	9.1001.0087.2	2	6207 2RS1-C3
005	4.1225.0420.0	1	
006	4.1201.0498.0	1	
007	9.1052.0006.3	4	35x45x2,5 DIN 988
008	9.1071.0037.1	1	A10x8x80 DIN 6885
009	4.1203.0527.0	1	
010	4.1225.1494.0	1	
011	9.1070.0023.2	2	Ø8x50 DIN 1481
012	9.1038.0006*3	1	M12x48 DIN 71752
013	4.1201.1471.0	1	
014	9.1029.0008*0	1	M12 DIN 934-8
015	9.1070.0018.4	2	Ø6x40 DIN 1481
016	9.1113.0273*6	1	M12x90 DIN 933-10.9
017	9.1048.0012*6	1	A13 DIN 125 []
018	4.1219.1499.0	1	
019	9.1075.0012.0	4	SPBX 2650 SF
020	4.1207.0618.0	1	
021	4.1229.0170.0	1	
022	4.1210.1493.0	1	
023	9.1113.0143*2	2	M10x150 DIN 931-8.8
024	9.1049.0018.4	12	Nylon []
025	4.1229.1498.0	4	L= 112 mm

REF.	ONDERDEELNR. PART NUMBER REFERENCE TEILNUMMER	AANTAL QUANTITY QUANTITE ANZAHL	
026	9.1029.0005*4	4	M10 DIN 934-8
027	9.1030.0004*2	4	M10 DIN 985-8
028	9.1113.0013*5	6	M8x16 DIN 933-8.8
029	9.1051.0001*6	6	A8,2 DIN 6798 []
030	9.1113.0292*4	2	M10x160 DIN 931-8.8
031	9.1048.0041*0	1	A13 DIN 9021 []
032	9.1048.0067.5	2	A13 DIN 9021 Nylon []
033	9.1048.0047.6	4	A10,5 DIN 125 Nylon []
041	9.1057.0003*2	2	M8x20 DIN 912-8.8
042	4.1201.2310.0	2	
043	9.1029.0004*3	2	M8 DIN 934-8
051	9.1170.0124.3	1	"NEEM VEILIGHEID IN ACHT"
052	9.1170.0253.6	1	"LELY"
053	9.1170.0255.1	1	"OPTIMO"
054	9.1170.0270.2	1	"320"
055	9.1170.0052.1	1	"LET OP; DRAAIENDE DELEN"
099	4.1201.2300.0	1	= REF. 041-043 Hulpstuk voor pulley-trekker Attachment for pulley puller Access. d' extracteur-poulie Zubehör für Abzieher

LELY

OPTIMO	type number type number numéro de type Typnummer	vanaf serienummer as from serial number après numéro de serie ab Seriennummer
320	4.1219.0015.1	10113 - 0501



E001-10-20

REF.	ONDERDEELNR. PART NUMBER REFERENCE TEILNUMMER	AANTAL QUANTITY QUANTITE ANZAHL
------	--	--

001	9.1161.0014.0	1
002	9.1066.0010*0	1
003	9.1119.0019.5	3
004	9.1001.0087.2	2
005	4.1225.0420.0	1
006	4.1201.0498.0	1
007	9.1052.0006.3	4
008	9.1071.0037.1	1
009	4.1203.0527.0	1
010	4.1225.1494.0	1
011	9.1070.0023.2	2
012	9.1038.0006*3	1
013	4.1201.1471.0	1
014	9.1029.0008*0	1
015	9.1070.0018.4	2
016	9.1113.0273*6	1
017	9.1048.0012*6	1
018	4.1219.1499.0	1
019	9.1075.0012.0	4
020	4.1207.0623.0	1
021	4.1229.0170.0	1
022	4.1210.1488.0	1
023	9.1113.0143*2	2
024	9.1049.0018.4	12
025	4.1229.1498.0	4

REF.	ONDERDEELNR. PART NUMBER REFERENCE TEILNUMMER	AANTAL QUANTITY QUANTITE ANZAHL
------	--	--

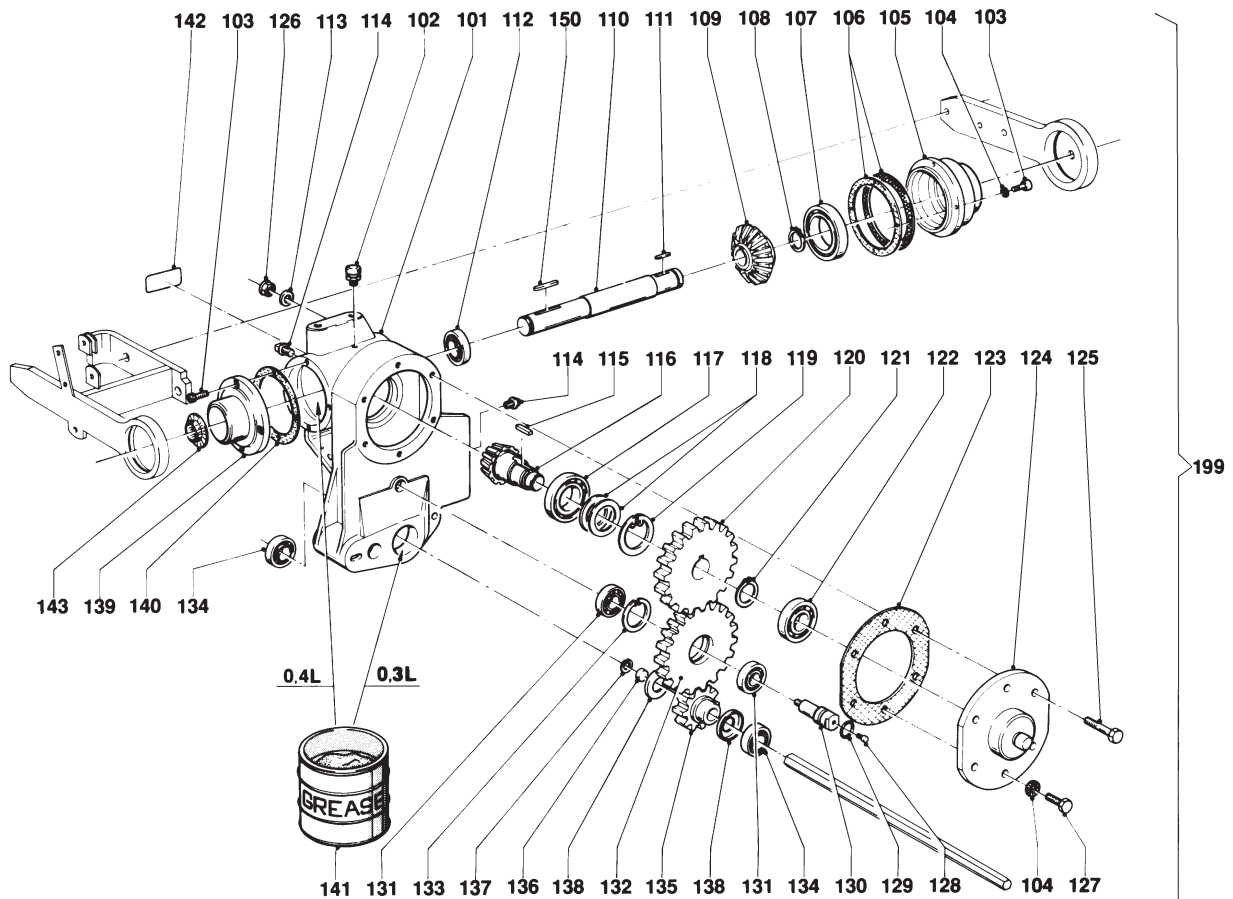
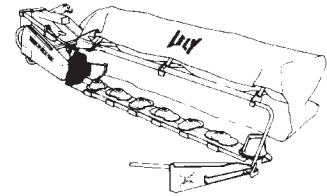
026	9.1029.0005*4	4
027	9.1030.0004*2	4
028	9.1113.0013*5	20
029	9.1051.0001*6	20
030	9.1113.0292*4	2
031	9.1048.0041*0	1
032	9.1048.0067.5	2
033	9.1048.0047.6	4
034	4.1207.0660.0	2
035	4.1207.0624.0	1
041	9.1057.0003.2	2
042	4.1201.2310.0	2
043	9.1029.0004*3	2
051	9.1170.0200.2	1
052	9.1170.0371.5	1
053	9.1170.0346.1	1
054	9.1170.0124.3	1
055	9.1170.0052.1	1
099	4.1201.2300.0	1

M10 DIN 934-8
M10 DIN 985-8
M8x16 DIN 933-8.8
A8,2 DIN 6798 [//////]
M10x160 DIN 931-8.8
A13 DIN 9021 [____]
A13 DIN 9021 Nylon [____]
A10,5 DIN 125 Nylon [____]
M8x20 DIN 912-8.8
M8 DIN 934-8
"LELY"
"OPTIMO"
"320"
"NEEM VEILIGHEID IN ACHT"
"LET OP; DRAAIENDE DELEN"

= REF. 041-043
Hulpstuk voor pulley-trekker
Attachment for pulley puller
Access. d' extracteur-poulie
Zubehör für Abzieher

LELY

OPTIMO	type number type number numéro de type Typnummer	vanaf serienummer as from serial number après numéro de série ab Seriennummer
280	4.1210.0010.1	972 - 0501
320	4.1219.0010.1	972 - 0501
320	4.1219.0011.1	993 - 0501



E053-01-01

REF.	ONDERDEELNR. PART NUMBER REFERENCE TEILNUMMER	AANTAL QUANTITY QUANTITE ANZAHL
------	--	--

101	4.1201.0301.0	1
102	4.1201.1472.0	1
103	9.1057.0010.2	8
104	9.1051.0002*0	7
105	4.1201.0303.0	1
106	4.1201.0311.0	(1)
107	9.1001.0067.3	1
108	9.1119.0019.5	1
109	4.1201.0314.0	1
110	4.1201.0304.0	1
111	9.1071.0021.6	1
112	9.1001.0087.2	1
113	9.1048.0007*1	~
114	9.1131.0001.3	2
115	9.1071.0039.3	1
116	4.1201.0321.0	1
117	9.1001.0059.2	1
118	4.1201.0310.0	(1)
119	9.1120.0014.6	1
120	4.1201.0320.0	1
121	9.1119.0020.6	1
122	9.1001.0019.4	1
123	4.1201.0325.0	1
124	4.1201.0290.0	1
	9.1150.0008.5	-
125	9.1113.0156*1	1
126	9.1030.0004*2	1

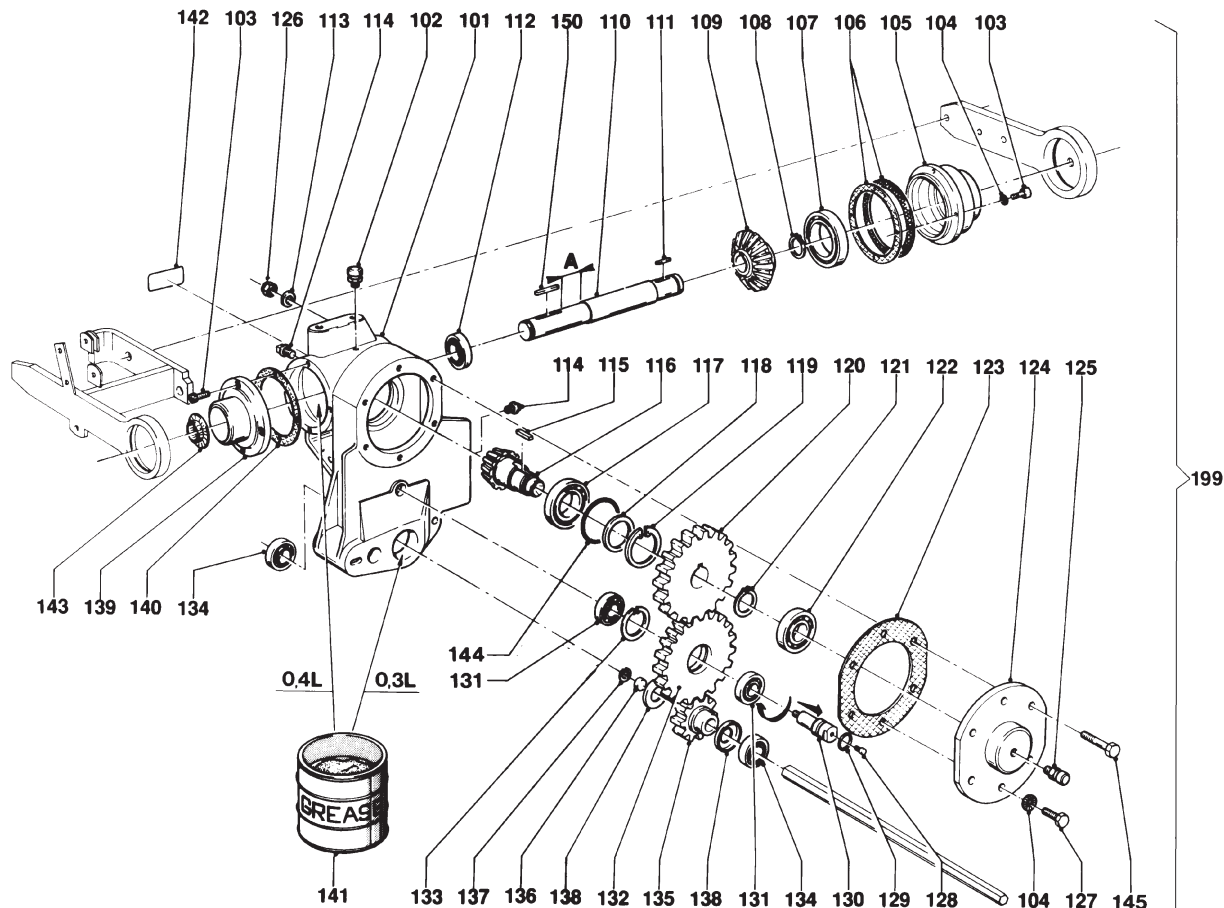
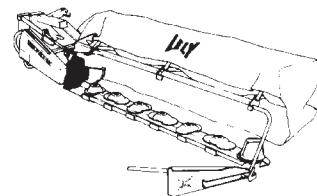
REF.	ONDERDEELNR. PART NUMBER REFERENCE TEILNUMMER	AANTAL QUANTITY QUANTITE ANZAHL
------	--	--

127	9.1113.0027.5	3
128	9.1108.0034.3	1
129	9.1043.0013.5	1
130	4.1201.0306.0	1
131	9.1001.0090.5	2
132	4.1201.0307.0	1
133	9.1120.0002.1	1
134	9.1001.0068.4	2
135	4.1219.0239.0	1
136	4.1201.0329.0	1
137	9.1120.0028.6	1
138	9.1107.0009.0	2
139	4.1201.0302.0	1
140	4.1201.0328.0	1
141	9.1171.0039.1	(0,7L)
	9.1171.0040.2	(0,7L)
	9.1171.0041.3	(0,7L)
	9.1171.0031.0	(0,7L)
	9.1171.0030.6	(0,7L)
	9.1171.0029.5	(0,7L)
142	9.1170.0303.0	1
	9.1170.0264.3	1
143	9.1106.0009.1	1
150	9.1071.0033.4	1
199	4.1219.0230.0	1

M10x20 DIN 933-8.8
R1/8"
OR 22x1,5
M12-L
6204 C3
[D+D]
16016
35x2,50 DIN 471
A10x8x63 DIN 6885
6207 2RS-1-C3
A10,5 DIN 125
R1/2"
B12x8x25 DIN 6885
42x1,75 DIN 472
6205 2RS-2-C4(VITON); HT-22B
18x1,00 DIN 472
6205 ZAV
1 kg CALITHIA EP-T-0 SHELL
5 kg CALITHIA EP-T-0 SHELL
10 kg CALITHIA EP-T-0 SHELL
1 kg EHL 484 XC ESSO
5 kg EHL 484 XC ESSO
10 kg EHL 484 XC ESSO
"CALITHIA EP-T-0 SHELL"
"EHL 484 XC ESSO"
Z20
A10x8x70 DIN 6885
= REF. 101-143

LELY

OPTIMO	type number type number numéro de type Typnummer	vanaf serienummer as from serial number après numéro de série ab Seriennummer
320	4.1219.0012.1	1003 - 0501



E053-02-01

REF.	ONDERDEELNR. PART NUMBER REFERENCE TEILNUMMER	AANTAL QUANTITY QUANTITE ANZAHL
------	--	--

101	4.1201.0301.0	1
102	4.1201.1472.0	1
103	9.1057.0010.2	8
104	9.1051.0002*0	7
105	4.1201.0303.0	1
106	4.1201.0311.0	(1)
107	9.1001.0067.3	1
108	9.1119.0019.5	1
109	4.1201.0314.0	1
110	4.1201.0304.0	1
111	9.1071.0021.6	1
112	9.1001.0087.2	1
113	9.1048.0007*1	~
114	9.1131.0001.3	2
115	9.1071.0039.3	1
116	4.1201.0321.0	1
117	9.1001.0059.2	1
118	4.1201.0310.0	(1)
119	9.1120.0014.6	1
120	4.1201.0320.0	1
121	9.1119.0020.6	1
122	9.1001.0019.4	1
123	4.1201.0325.0	1
124	4.1201.0290.0	1
125	9.1150.0008.5	1

REF.	ONDERDEELNR. PART NUMBER REFERENCE TEILNUMMER	AANTAL QUANTITY QUANTITE ANZAHL
------	--	--

126	9.1030.0004*2	1
127	9.1113.0027*5	3
128	9.1108.0034.3	1
129	9.1043.0013.5	1
130	4.1201.0306.0	1
131	9.1001.0090.5	2
132	4.1201.0307.0	1
133	9.1120.0002.1	1
134	9.1001.0119.6	2
135	4.1219.0239.0	1
136	4.1201.0329.0	1
137	9.1120.0028.6	1
138	9.1107.0009.0	2
139	4.1201.0302.0	1
140	4.1201.0328.0	1
141	9.1171.0039.1	(0,7L)
141	9.1171.0040.2	(0,7L)
141	9.1171.0041.3	(0,7L)
141	9.1171.0031.0	(0,7L)
142	9.1170.0303.0	1
143	9.1106.0009.1	1
144	9.1043.0048.5	1
145	9.1113.0156*1	1
150	9.1071.0033.4	1
199	4.1219.0230.0	1

M10 DIN 985-8

M10x20 DIN 933-8.8

R1/8"

OR 22x1,5

M12-L

6204 C3

42x1,75 DIN 472

6205 2RS2-C5-HT-22B

18x1,00 DIN 472

6205 ZAV

1 kg CALITHIA EP-T-0 SHELL

5 kg CALITHIA EP-T-0 SHELL

10 kg CALITHIA EP-T-0 SHELL

1 kg EHL 484 XC ESSO

"CALITHIA EP-T-0 SHELL"

Z207

OR 89,5x3

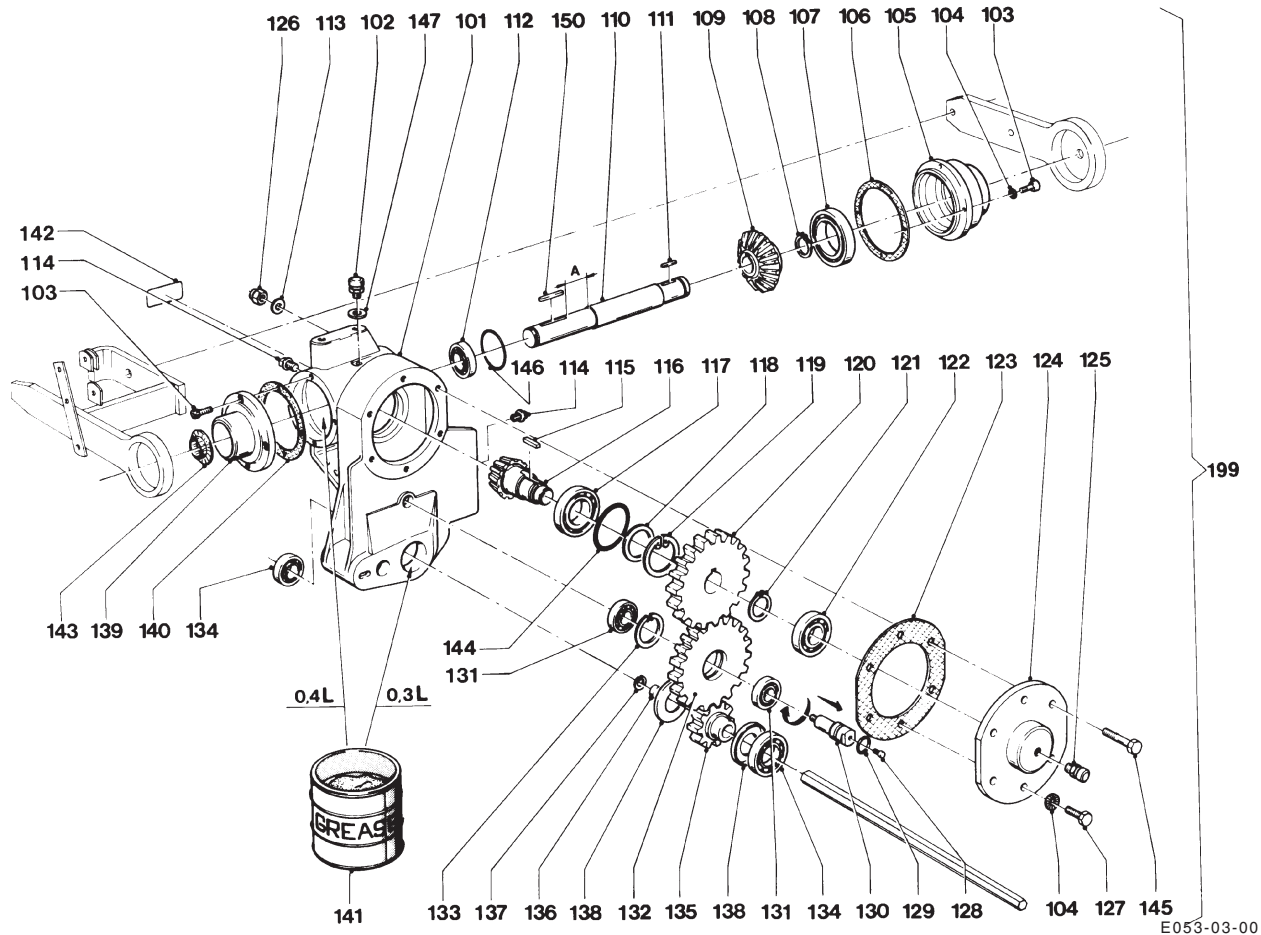
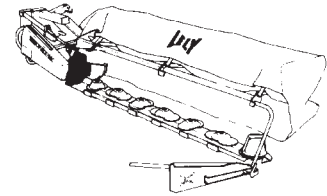
M10x85 DIN 931-10.9

A10x8x70 DIN 6885

= REF. 101-145

LELY

OPTIMO	type number type number numéro de type Typnummer	vanaf serienummer as from serial number après numéro de serie ab Seriennummer
320	4.1219.0012.1	1010 - 0501
320	4.1219.0014.1	1010 - 0501
320	4.1219.0015.1	10113 - 0501



REF.	ONDERDEELNR. PART NUMBER REFERENCE TEILNUMMER	AANTAL QUANTITY QUANTITE ANZAHL
------	--	--

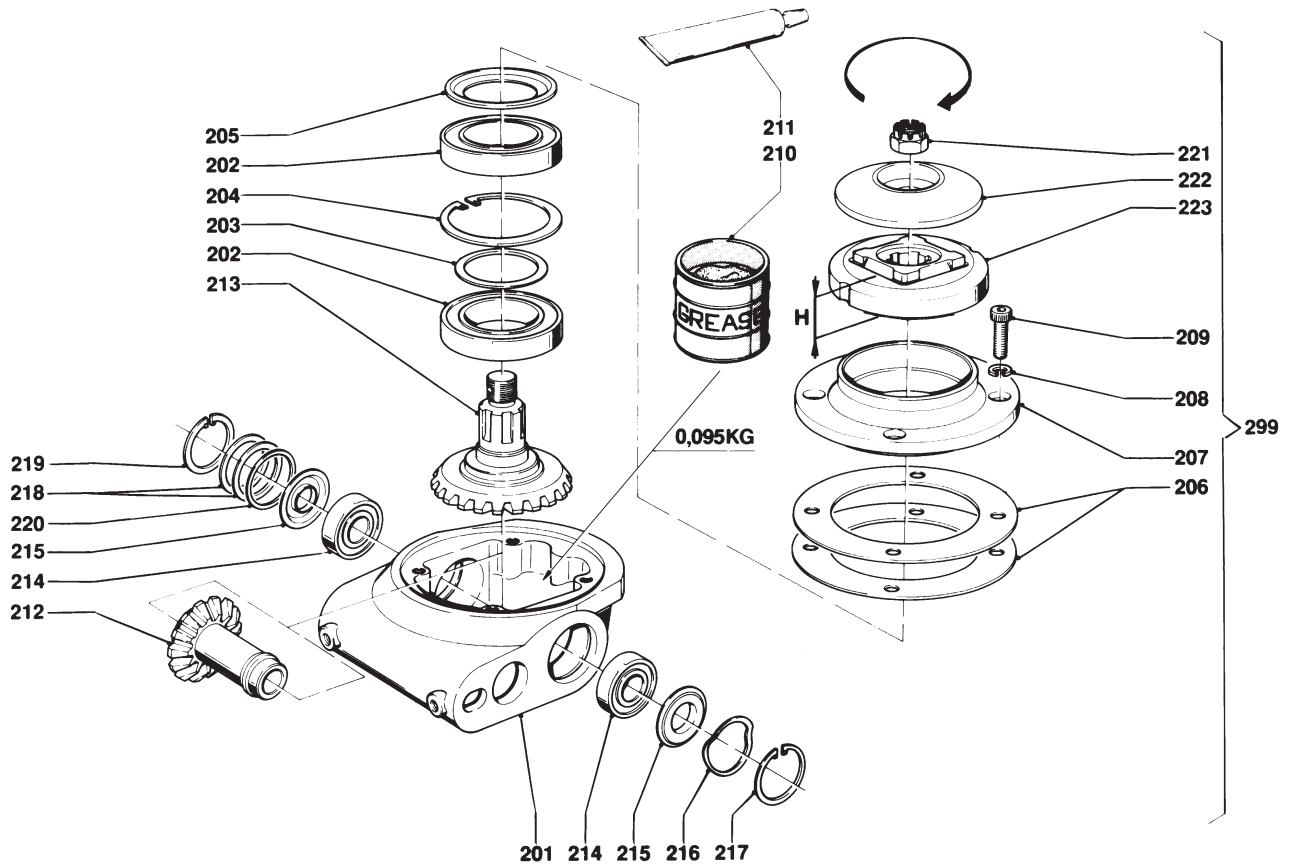
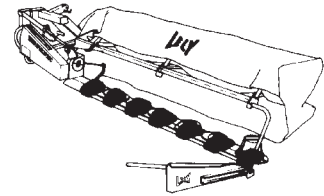
101	4.1201.0301.0	1
102	9.1150.0013.3	1 R1/4"
103	9.1057.0010.2	8 M10x25 DIN 912-12.9
104	9.1051.0002*0	7 A10,5 DIN 6798 [//////]
105	4.1201.0303.0	1
106	4.1201.0311.0	(1) [D+D]
107	9.1001.0067.3	1 16016
108	9.1119.0019.5	1 35x2,50 DIN 471
109	4.1201.0314.0	1
110	4.1201.0298.0	1 A= 32,5 mm
111	9.1071.0021.6	1 A10x8x63 DIN 6885
112	9.1001.0087.2	1 6207 2RS1-C3
113	9.1048.0007*1	~ A10,5 DIN 125 [—]
114	9.1131.0001.3	2 R1/2"
115	9.1071.0039.3	1 B12x8x25 DIN 6885
116	4.1201.0321.0	1
117	9.1001.0059.2	1 6210 2RS1
118	4.1201.0310.0	(1) [D+D]
119	9.1120.0014.6	1 90x3,00 DIN 472
120	4.1201.0320.0	1
121	9.1119.0020.6	1 42x1,75 DIN 471
122	9.1001.0019.4	1 6206
123	4.1201.0325.0	1
124	4.1201.0312.0	1
125	9.1150.0008.5	1 G1/4" SLW 17
126	9.1030.0004*2	1 M10 DIN 985-8
127	9.1113.0027*5	3 M10x20 DIN 933-8.8

REF.	ONDERDEELNR. PART NUMBER REFERENCE TEILNUMMER	AANTAL QUANTITY QUANTITE ANZAHL
------	--	--

128	9.1108.0034.3	1 R1/8"
129	9.1043.0013.5	1 OR 22x1,5
130	4.1201.0306.0	1 M12-L
131	9.1001.0090.5	2 6204 C3
132	4.1201.0307.0	1
133	9.1120.0002.1	1 42x1,75 DIN 472
134	9.1001.0119.6	2 6205 2RS2-C5-HT-22B
135	4.1219.0239.0	1
136	4.1201.0329.0	1
137	9.1120.0028.6	1 18x1,00 DIN 472
138	9.1107.0009.0	2 6205 ZAV
139	4.1201.0299.0	1
140	4.1201.0328.0	1
141	9.1171.0039.1	(0,7 L) 1 kg CALITHIA EP-T-0 SHELL
	9.1171.0040.2	(0,7 L) 5 kg CALITHIA EP-T-0 SHELL
	9.1171.0041.3	(0,7 L) 10 kg CALITHIA EP-T-0 SHELL
142	9.1170.0303.0	1 "CALITHIA EP-T-0 SHELL"
143	9.1106.0009.1	1 Z207
144	9.1043.0048.5	1 OR 89,5x3
145	9.1113.0156*1	1 M10x85 DIN 931-10.9
146	9.1043.0050.0	1 OR 72x2
147	9.1137.0401.5	1 14x20x1,5 Cu [—]
150	9.1071.0033.4	1 A10x8x70 DIN 6885
199	4.1219.0230.0	1 = REF. 101-147

LELY

OPTIMO	type number type number numéro de type Typnummer	vanaf serienummer as from serial number après numéro de série ab Seriennummer
280	4.1210.0010.1	972 - 0501
320	4.1219.0010.1	972 - 0501
320	4.1219.0011.1	993 - 0501
320	4.1219.0012.1	1003 - 0501
320	4.1219.0014.1	1010 - 0501



E008-03-01

REF.	ONDERDEELNR. PART NUMBER REFERENCE TEILNUMMER	AANTAL QUANTITY QUANTITE ANZAHL
------	--	--

201	4.1201.0068.0	1
202	9.1001.0065.1	2
203	9.1052.0004.1	1
204	9.1120.0026.4	1
205	9.1107.0008.6	1
206	4.1290.2001.0	(1)
207	4.1201.0067.0	1
208	9.1121.0024*1	4
209	9.1057.0003.2	4
210	9.1171.0039.1	(0,095 kg)
	9.1171.0040.2	(0,095 kg)
	9.1171.0041.3	(0,095 kg)
	9.1171.0031.0	(0,095 kg)
	9.1171.0030.6	(0,095 kg)
	9.1171.0029.5	(0,095 kg)
211	9.1171.0038.0	1
SHELL	9.1171.0032.1	1
212	4.1219.0218.0	1
213	4.1201.0063.0	1
214	9.1001.0064.0	2
215	9.1107.0007.5	2
216	9.1049.0013.6	1

REF.	ONDERDEELNR. PART NUMBER REFERENCE TEILNUMMER	AANTAL QUANTITY QUANTITE ANZAHL
------	--	--

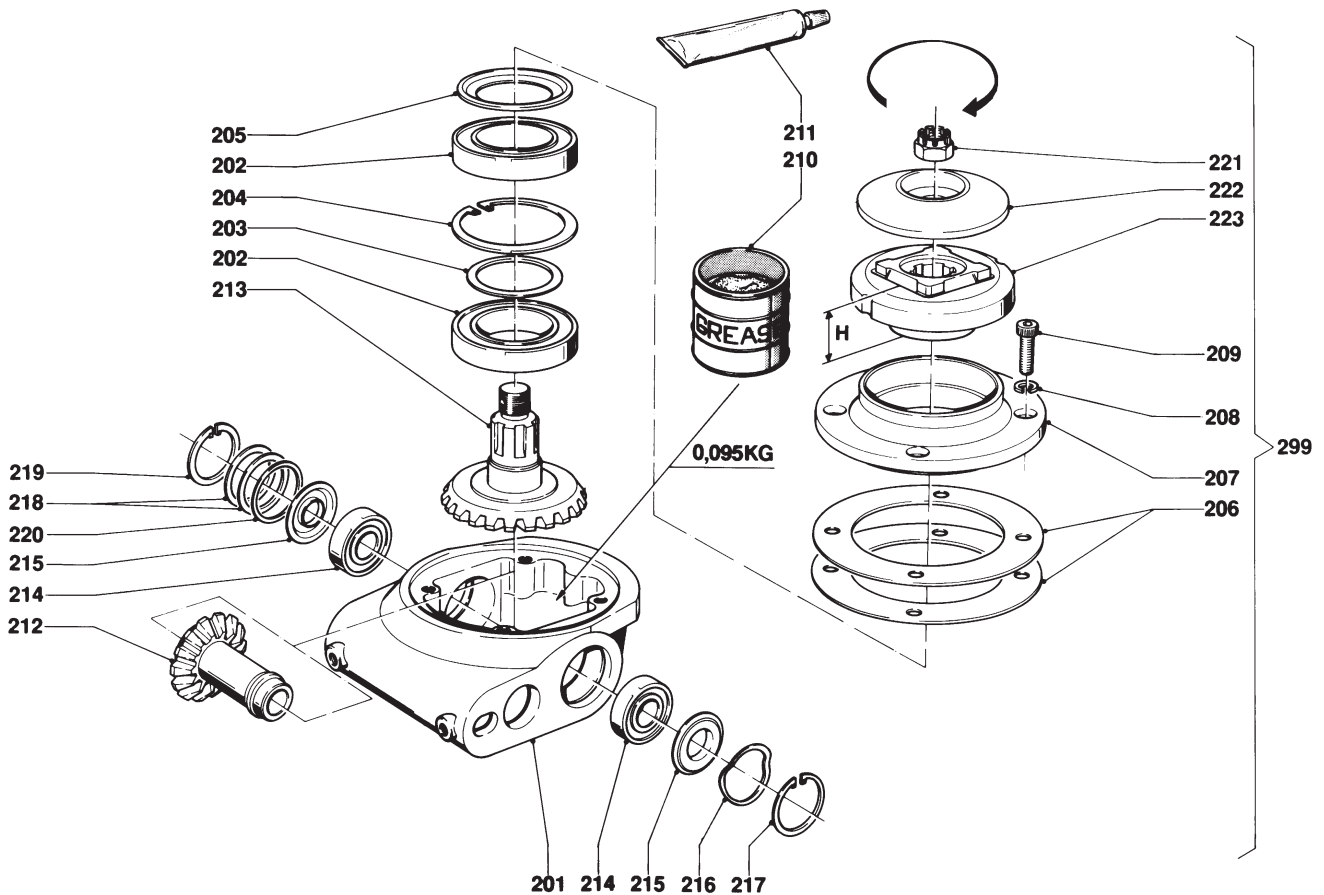
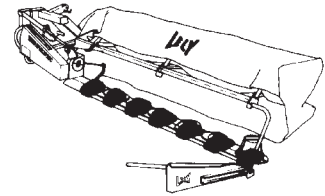
217	9.1120.0027.5	1
218	9.1093.0065.0	2
219	9.1120.0002.1	1
220	4.1201.0061.0	1
221	9.1031.0013.3	1
222	4.1201.1467.0	1
223	4.1201.0062.0	1
298	4.1219.0210.1	3 / 4
299	4.1219.0220.1	4 / 4

			47x1,75 V
			37x47x0,3 DIN 988
			47x1,75 DIN 472
			M18x1,5 DIN 937-22H
			H= 38 mm

			280/320
			= REF. 201-223 [LD][x]
			= REF. 201-223 [RD]

LELY

OPTIMO	type number type number numéro de type Typnummer	vanaf serienummer as from serial number après numéro de série ab Seriennummer
320	4.1219.0015.1	10113 - 0501



E008-05-01

REF.	ONDERDEELNR. PART NUMBER REFERENCE TEILNUMMER	AANTAL QUANTITY QUANTITE ANZAHL
------	--	--

201	4.1201.0068.0	1
202	9.1001.0065.1	2
203	9.1052.0004.1	1
204	9.1120.0026.4	1
205	9.1107.0008.6	1
206	4.1290.2001.0	(1)
207	4.1201.0067.0	1
208	9.1121.0024*1	4
209	9.1057.0003.2	4
210	9.1171.0039.1	(0,095 kg)
	9.1171.0040.2	(0,095 kg)
	9.1171.0041.3	(0,095 kg)
	9.1171.0031.0	(0,095 kg)
	9.1171.0030.6	(0,095 kg)
	9.1171.0029.5	(0,095 kg)
211 SHELL	9.1171.0038.0	1
	9.1171.0032.1	(1)
212	4.1219.0218.0	1
213	4.1220.0057.0	1
214	9.1001.0064.0	2
215	9.1107.0007.5	2
216	9.1049.0013.6	1

REF.	ONDERDEELNR. PART NUMBER REFERENCE TEILNUMMER	AANTAL QUANTITY QUANTITE ANZAHL
------	--	--

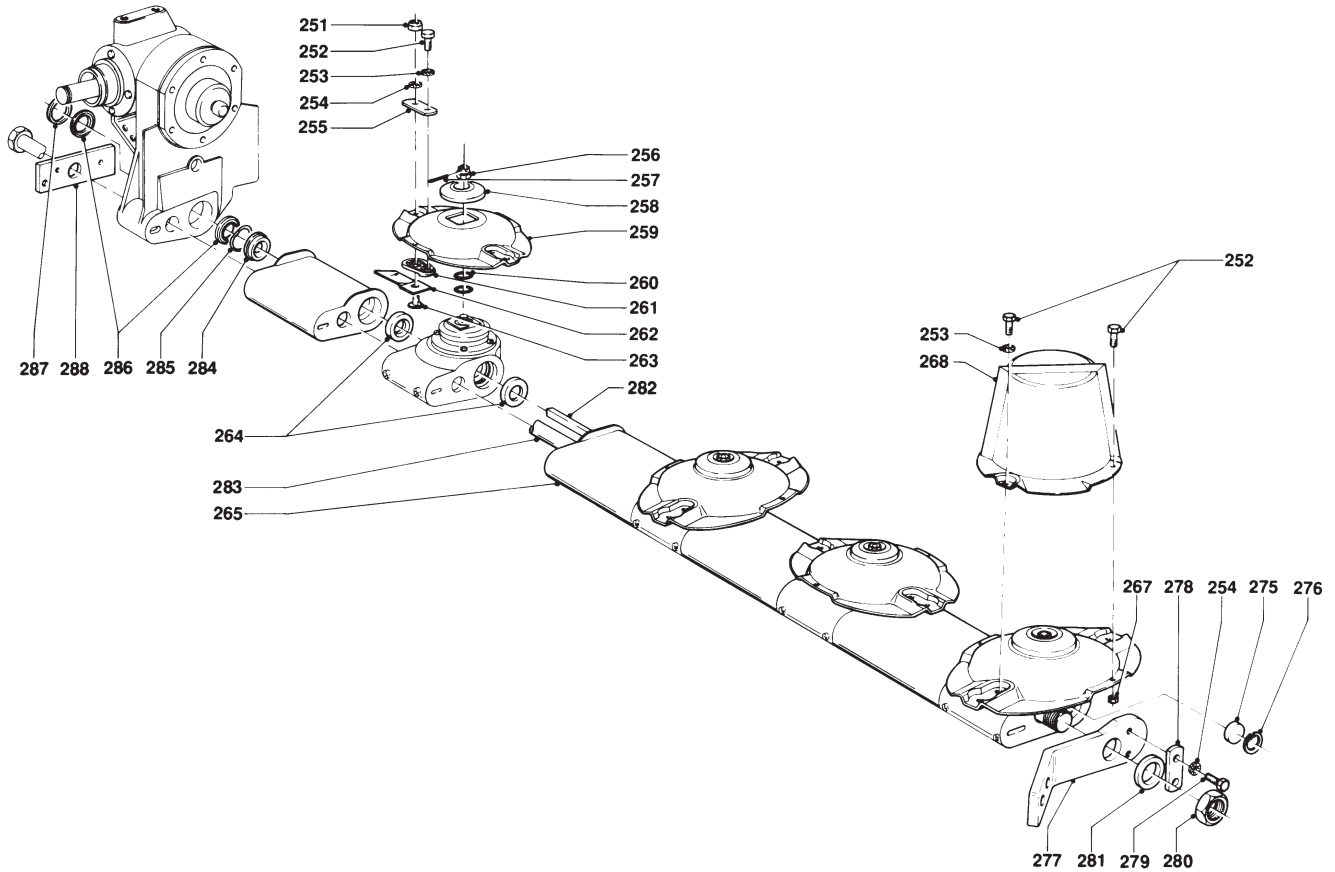
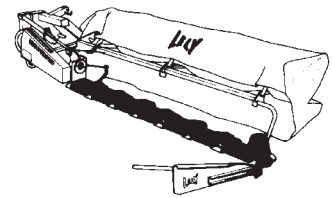
217	9.1120.0027.5	1
218	9.1093.0065.0	2
219	9.1120.0002.1	1
220	4.1201.0061.0	1
221	9.1031.0013.3	1
222	4.1201.1467.0	1
223	4.1225.0189.0	1
298	4.1219.0210.1	4
299	4.1219.0220.1	4

[LD][x]

[RD]

LELY

OPTIMO	type number type number numéro de type Typnummer	vanaf serienummer as from serial number après numéro de serie ab Seriennummer
280	4.1210.0010.1	972 - 0501
320	4.1219.0010.1	972 - 0501
	4.1219.0011.1	993 - 0501
	4.1219.0012.1	1003 - 0501
	4.1219.0014.1	1010 - 0501
	4.1219.0015.1	10113 - 0501



E003-07-00

REF.	ONDERDEELNR. PART NUMBER REFERENCE TEILNUMMER	AANTAL QUANTITY QUANTITE ANZAHL		
------	--	--	--	--

280 320

251	9.1030.0018*2	14 16	M10 DIN 985-10	
252	9.1113.0014*6	16 18	M8x20 DIN 933-8.8	
253	9.1051.0001*6	14 16	A8,2 DIN 6798	[////]
254	9.1051.0002*0	16 18	A10,5 DIN 6798	[////]
255	4.1201.1468.0	14 16		
256	9.1031.0013.3	(7) (8)	(= REF. 221) M18x1,5	
257	9.1072.0017.1	7 8	3x30 DIN 94	
258	4.1201.1467.0	(7) (8)	(= REF. 222)	
259	4.1201.1469.0	7 8		
260	9.1043.0020.5	14 16	OR 16x3	
261	4.1201.0142.0	14 16		
262	4.1201.1474.0	8 8	[RD]	L= 120 mm
	4.1201.1473.0	6 8	[LD][x]	L= 120 mm
263	4.1201.0141*0	14 16		
264	4.1201.0145.0	13 15		
265	4.1201.0143.0	6 8	L= 250 mm	
	4.1202.0148.0	1 -	L= 285 mm	
267	9.1030.0012*3	2 2	M8 DIN 985-8	
268	4.1201.0391.0	1 (1)	⌀= 175 mm	
	4.1210.2000.0	(1) 1	⌀= 202 mm [x]	

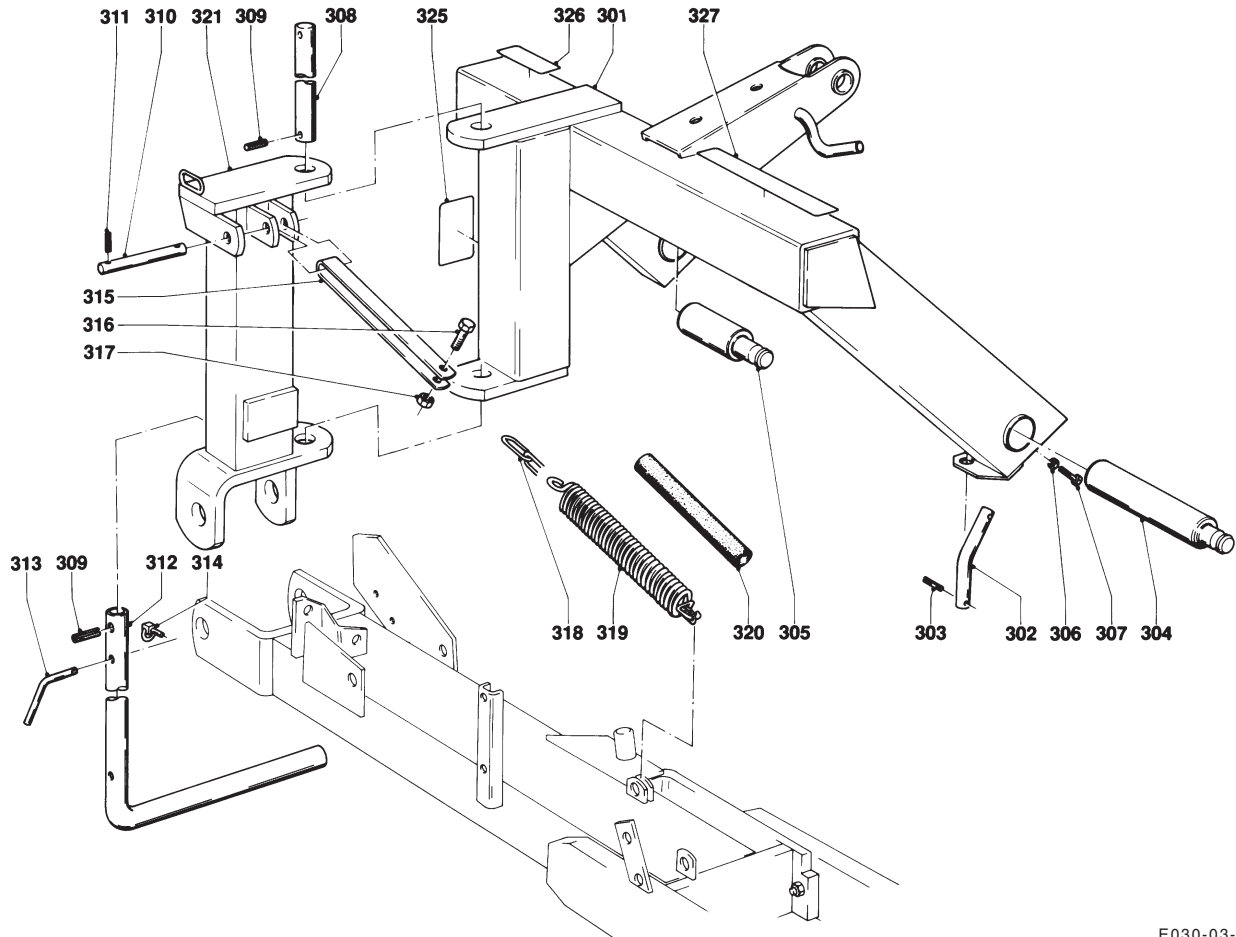
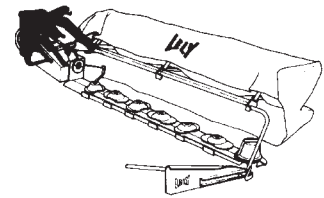
REF.	ONDERDEELNR. PART NUMBER REFERENCE TEILNUMMER	AANTAL QUANTITY QUANTITE ANZAHL		
------	--	--	--	--

280 320

275	4.1201.0329.0	1 1		
276	9.1120.0028.6	1 1	18x1,00 DIN 472	
277	4.1201.0341.0	1 1		
278	4.1201.0135.0	1 1		
279	9.1113.0027*5	2 2	M10x20 DIN 933-8.8	
280	9.1029.0024*2	1 1	M30x1,5 DIN 934-8	
281	9.1052.0011.1	1 1	S30x42x2,5 DIN 988	
282	4.1210.0148.0	1 -	*	
	4.1219.0209.0	- 1	*	
283	4.1210.0400.0	1 -		
	4.1219.0040.0	- 1		
284	4.1201.0146.0	1 1		
285	9.1049.0012.5	1 1	51x42 G-6205	
286	9.1107.0006.4	2 2	6205 ZJV	
287	9.1052.0009*6	1 1	S42x52x2,5 DIN 988	
288	4.1201.0120.0	1 1		

LELY

OPTIMO	type number type number numéro de type Typnummer	vanaf serienummer as from serial number après numéro de serie ab Seriennummer
280	4.1210.0010.1	972 - 0501
320	4.1219.0010.1	972 - 0501
320	4.1219.0011.1	993 - 0501



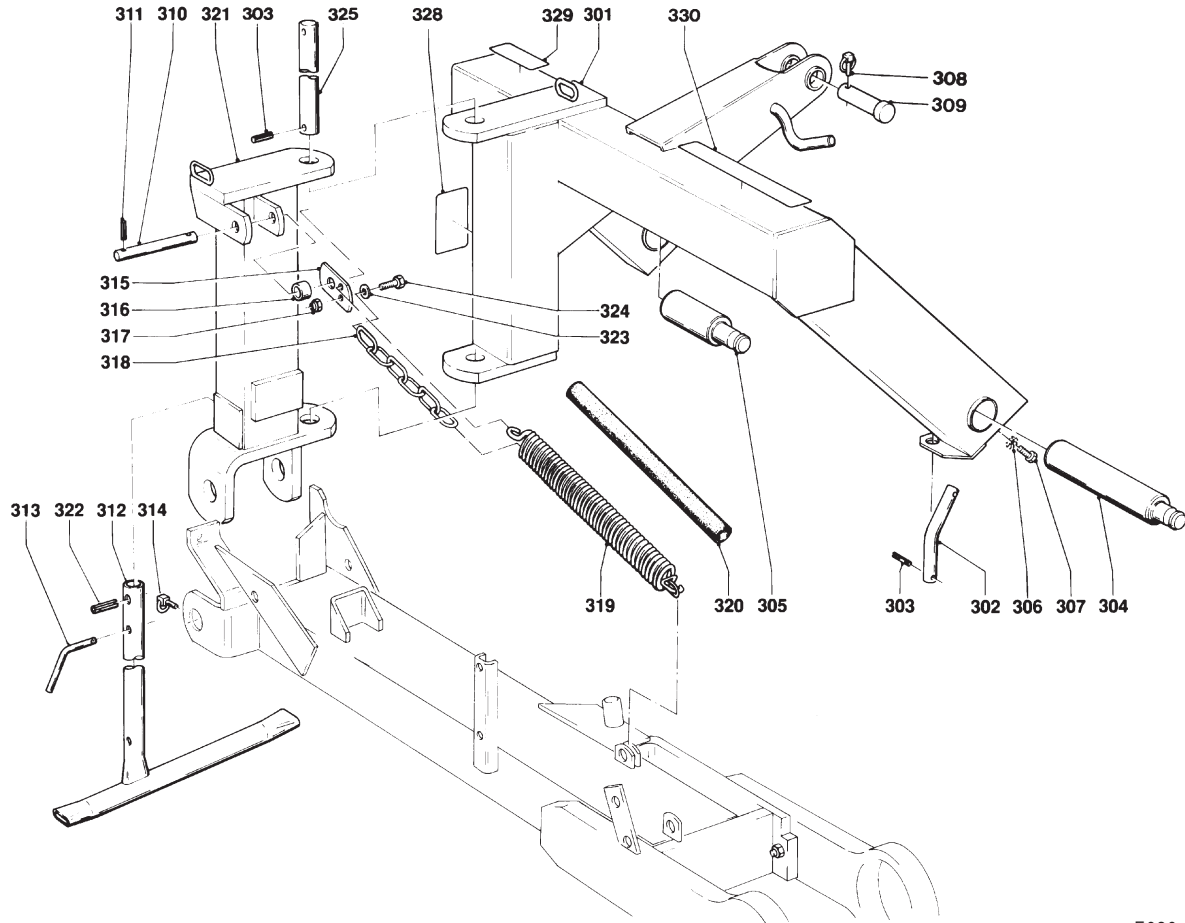
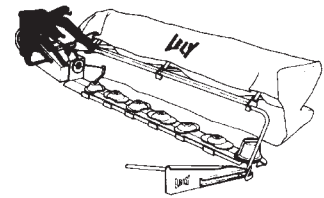
E030-03-00

REF.	ONDERDEELNR. PART NUMBER REFERENCE TEILNUMMER	AANTAL QUANTITY QUANTITE ANZAHL	
301	4.1208.0341.0	1	
302	4.1208.1497.0	1	
303	9.1070.0028.0	2	Ø10x60 DIN 1481
304	4.1208.1498.0	1	
305	4.1208.1499.0	1	
306	9.1029.0008*0	2	M12 DIN 934-8
307	9.1113.0118*5	2	M12x40 DIN 933-8.8
308	4.1207.0611.0	1	
309	9.1070.0028.0	2	Ø10x60 DIN 1481
310	4.1210.1491.0	1	
311	9.1070.0018.4	2	Ø6x40 DIN 1481
312	4.1210.0250.0	1	
313	4.1003.0142.0	1	
314	9.1123.0003*6	1	Ø6
315	4.1210.1492.0	1	
316	1.1623.0043.0	1	
317	9.1030.0004*2	1	M10 DIN 985-8
318	4.1203.1495.0	1	15x(6x42)= 9.1144.0026*1
319	4.1207.0616.0	1	
320	4.1203.1494.0	1	
321	4.1210.0591.0	1	
322	9.1070.0023.2	1	Ø8x50 DIN 1481
323	9.1048.0008*2	1	A10,5 DIN 9021 []
324	9.1113.0117*4	1	M10x35 DIN 933-8.8

REF.	ONDERDEELNR. PART NUMBER REFERENCE TEILNUMMER	AANTAL QUANTITY QUANTITE ANZAHL	
328	9.1170.0281.6	1	"Maaihoogte 22" 55 cm" "Mowing height 22" 55 cm" "Hautr. de fauchage 55 cm" "Mähhöhe 22" 55 cm"
329	9.1170.0125.4	1	"MAX. 540/min"
330	9.1170.0091.5	1	"ATTENTIE; PTO INSCHAKELEN BIJ STATIONAIR TOERENTAL"

LELY

OPTIMO	type number type number numéro de type Typnummer	vanaf serienummer as from serial number après numéro de série ab Seriennummer
320	4.1219.0012.1	1003 - 0501



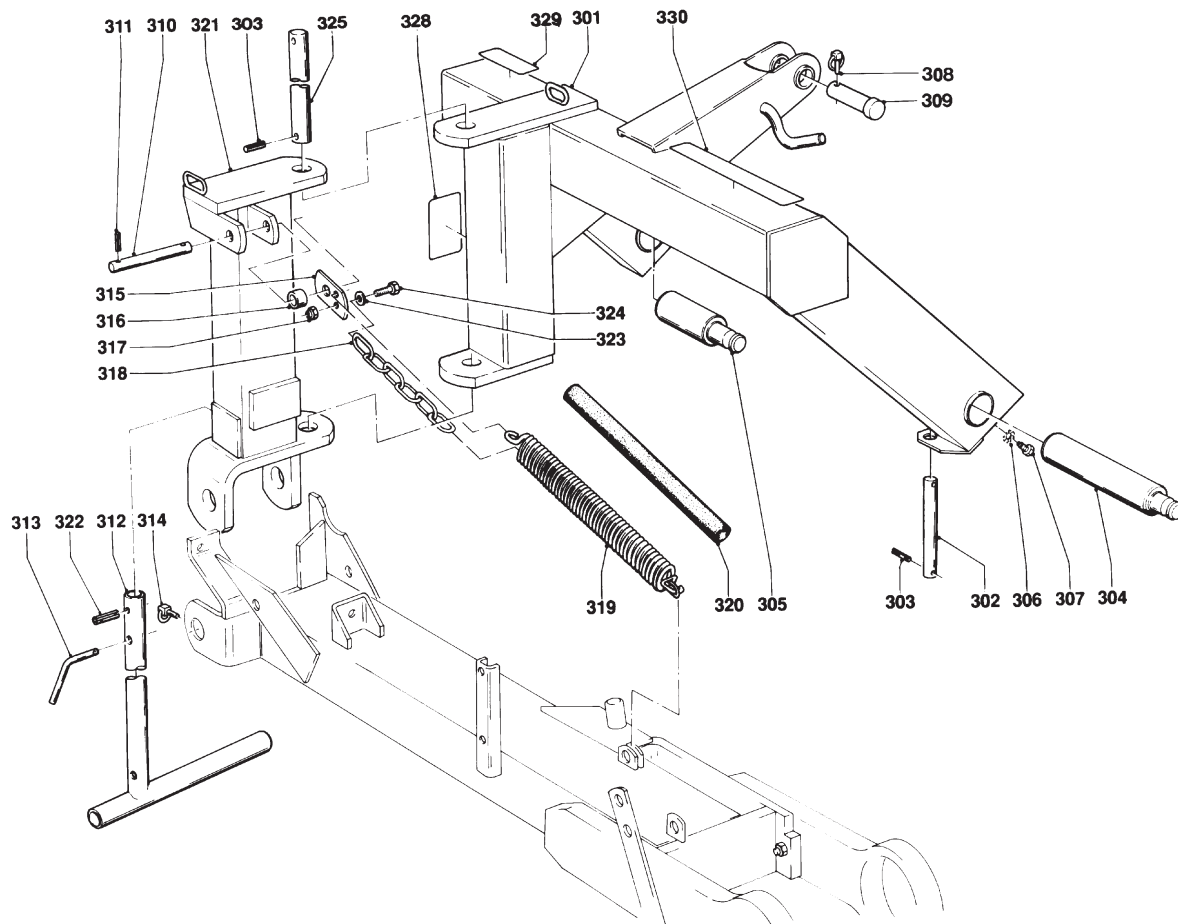
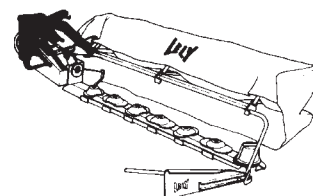
E030-05-00

REF.	ONDERDEELNR. PART NUMBER REFERENCE TEILNUMMER	AANTAL QUANTITY QUANTITE ANZAHL		
301	4.1208.0341.0	1		
302	4.1208.1497.0	1		
303	9.1070.0028.0	4	Ø10x60 DIN 1481	
304	4.1208.1498.0	1		
305	4.1208.1499.0	1		
306	9.1051.0003*1	2	A12,5 DIN 6798	[////]
307	9.1113.0047*4	2	M12x20 DIN 933-8.8	
308	9.1123.0002*5	1	Ø11	
309	9.1088.0005*1	1	25-95	
310	4.1003.0048.0	1		
311	9.1070.0018.4	2	Ø6x40 DIN 1481	
312	4.1210.0250.0	1		
313	4.1003.0142.0	1		
314	9.1123.0003*6	1	Ø6	
315	4.1210.1492.0	1		
316	4.1210.1489.0	1		
317	9.1030.0004*2	1	M10 DIN 985-8	
318	4.1203.1495.0	1	15x(6x42)= 9.1144.0026*1	
319	4.1207.0616.0	1		
320	4.1203.1494.0	1		
321	4.1210.0591.0	1		
322	9.1070.0023.2	1	Ø8x50 DIN 1481	
323	9.1048.0008*2	1	A10,5 DIN 9021	[]
324	9.1113.0117*4	1	M10x35 DIN 933-8.8	
325	4.1207.0611.0	1		

REF.	ONDERDEELNR. PART NUMBER REFERENCE TEILNUMMER	AANTAL QUANTITY QUANTITE ANZAHL		
328	9.1170.0281.6	1	"Maaihoogte 22" 55 cm"	
			"Mowing height 22" 55 cm"	
			"Hautr. de fauchage 55 cm"	
			"Mähhöhe 22" 55 cm"	
329	9.1170.0125.4	1	"MAX. 540/min"	
330	9.1170.0091.5	1	"ATTENTIE; PTO INSCHAKELEN BIJ STATIONAIR TOERENTAL"	

LELY

OPTIMO	type number type number numéro de type Typnummer	vanaf serienummer as from serial number après numéro de série ab Seriennummer
320	4.1219.0012.1	1010 - 0501
320	4.1219.0014.1	1010 - 0501
320	4.1219.0015.1	10113 - 0501



E030-06-00

REF.	ONDERDEELNR. PART NUMBER REFERENCE TEILNUMMER	AANTAL QUANTITY QUANTITE ANZAHL		
------	--	--	--	--

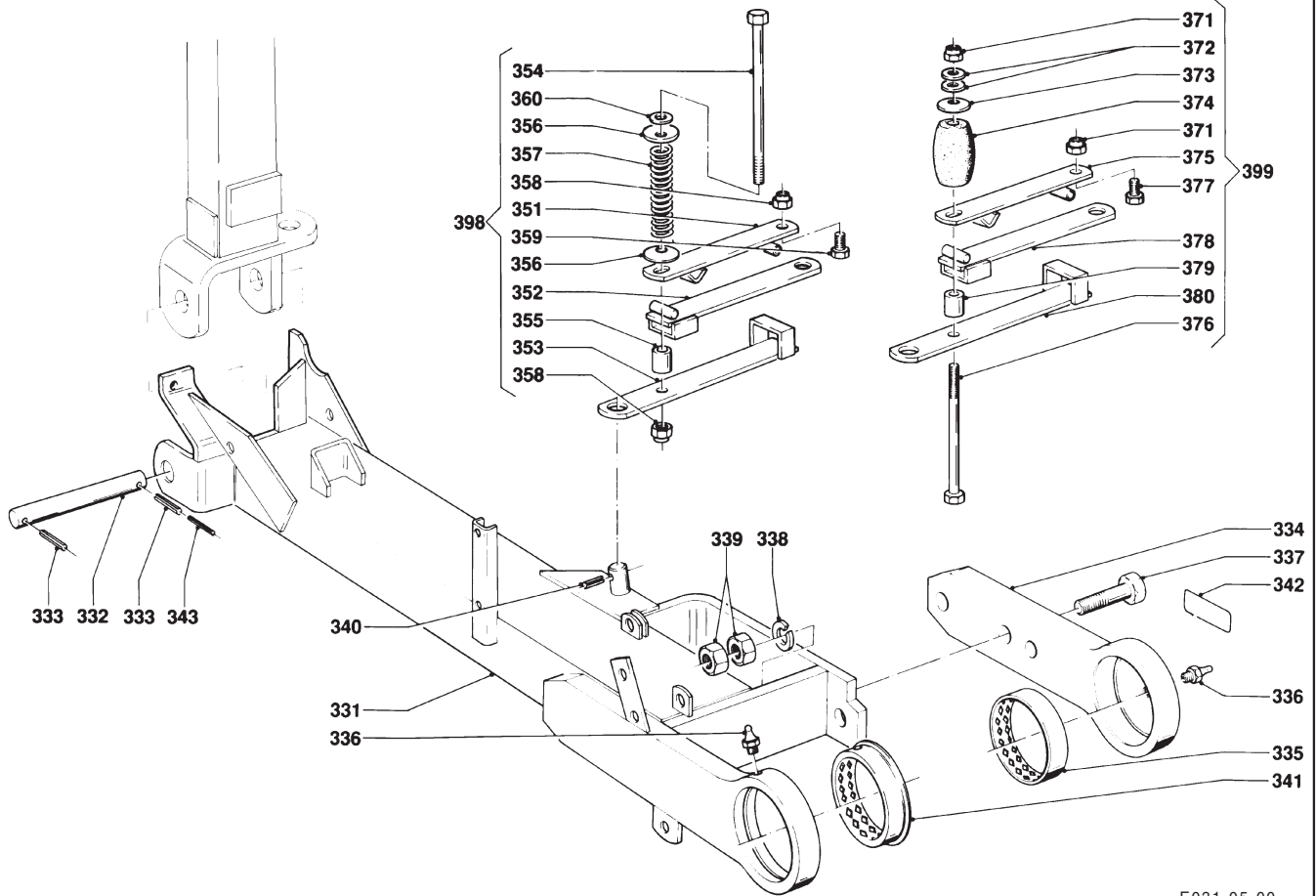
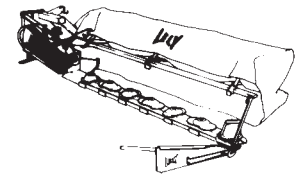
301	4.1208.0342.0	1		
302	4.1208.1496.0	1		
303	9.1070.0028.0	4	Ø10x60 DIN 1481	
304	4.1208.1498.0	1		
305	4.1208.1499.0	1		
306	9.1051.0004*2	2	A16,5 DIN 6798	[//////]
307	4.1208.0347.0	2	M16	
308	9.1123.0002*5	1	Ø11	
309	9.1088.0005*1	1	25-95	
310	4.1003.0048.0	1		
311	9.1070.0018.4	2	Ø6x40 DIN 1481	
312	4.1215.0600.0	1		
313	4.1003.0142.0	1		
314	9.1123.0003*6	1	Ø6	
315	4.1210.1492.0	1		
316	4.1210.1489.0	1		
317	9.1030.0004*2	1	M10 DIN 985-8	
318	4.1203.1495.0	1	15x(6x42)	
319	4.1207.0616.0	1		
320	4.1203.1494.0	1		
321	4.1210.0591.0	1		
322	9.1070.0023.2	1	Ø8x50 DIN 1481	
323	9.1048.0008*2	1	A10,5 DIN 9021	[]
324	9.1113.0117*4	1	M10x35 DIN 933-8.8	
325	4.1207.0611.0	1		

REF.	ONDERDEELNR. PART NUMBER REFERENCE TEILNUMMER	AANTAL QUANTITY QUANTITE ANZAHL		
------	--	--	--	--

328	9.1170.0281.6	1	"Maaihoogte 22" 55 cm" "Mowing height 22" 55 cm" "Hautr. de fauchage 55 cm" "Mähhöhe 22" 55 cm"	
329	9.1170.0125.4	1	"MAX. 540/min"	
330	9.1170.0091.5	1	"ATTENTIE; PTO INSCHAKELEN BIJ STATIONAIR TOERENTAL"	

LELY

OPTIMO	type number type number numéro de type Typnummer	vanaf serienummer as from serial number après numéro de serie ab Seriennummer
280	4.1210.0010.1	972 - 0501
320	4.1219.0010.1	972 - 0501
320	4.1219.0011.1	993 - 0501
320	4.1219.0012.1	1003 - 0501



E031-05-00

REF.	ONDERDEELNR. PART NUMBER REFERENCE TEILNUMMER	AANTAL QUANTITY QUANTITE ANZAHL	
------	--	--	--

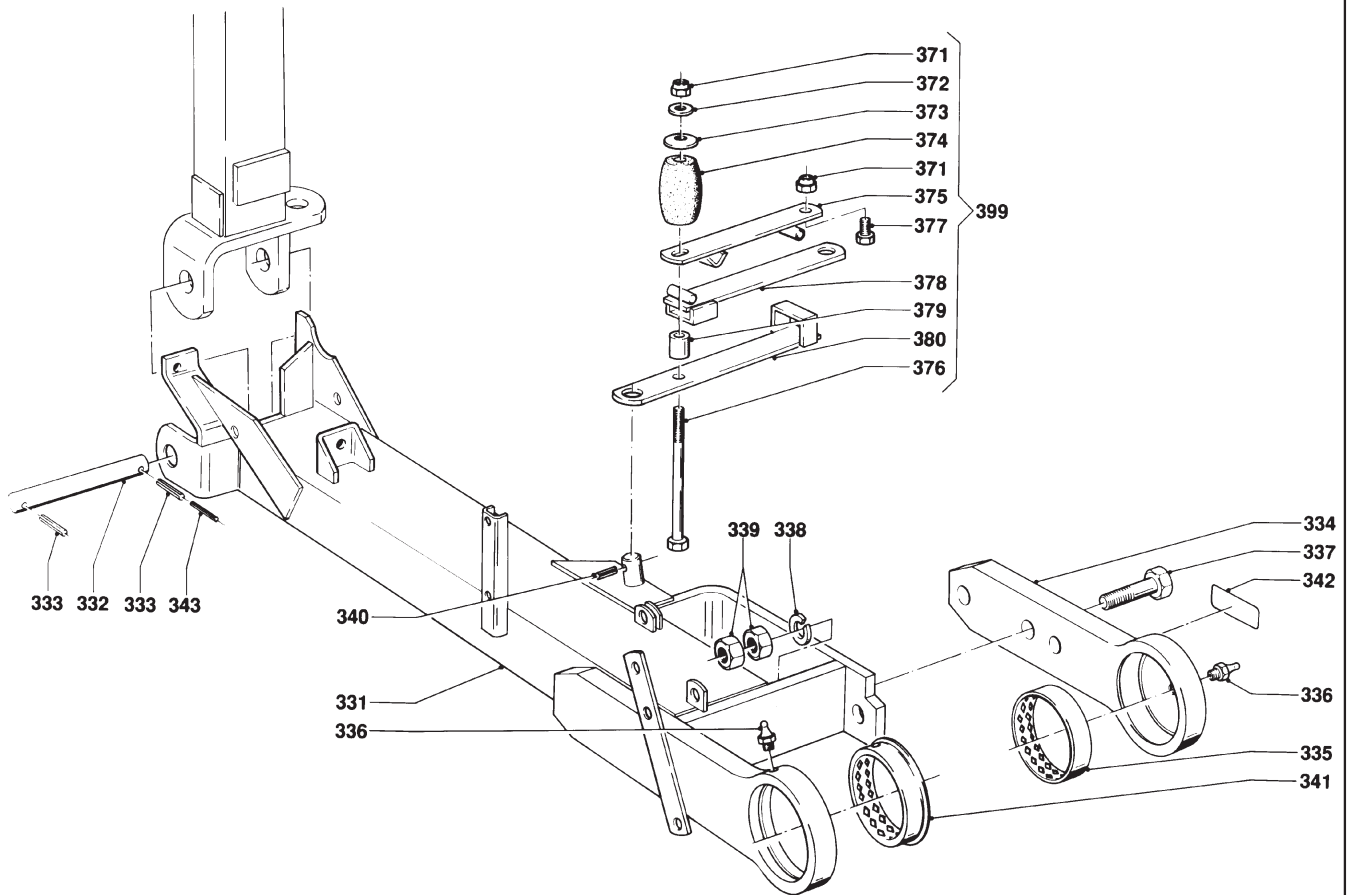
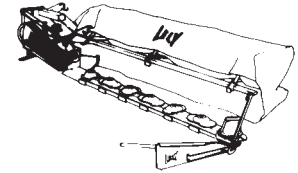
331	4.1210.0570.0	1	
332	4.1207.0610.0	1	
333	9.1070.0038.3	2	Ø10x75 DIN 1481
334	4.1207.0580.0	1	
335	4.1201.1482.0	1	
336	9.1068.0007*2	2	AM8x1,25 DIN 71412
337	9.1113.0094*2	3	M20x90 DIN 931-8.8
338	9.1121.0014*5	3	A20 DIN 127 [—]
339	9.1029.0016*1	6	M20 DIN 934-8
340	9.1070.0028.0	1	Ø10x60 DIN 1481
341	4.1207.0620.0	1	
342	9.1170.0205.0	2	"Smeerpunt" "Greasing point" "Point de graissage" "Schmierstelle"
343	9.1070.0062.6	1	Ø6x75 DIN 1481
351	4.1201.0221.0	1	
352	4.1201.0231.0	1	
353	4.1201.0241.0	1	
354	9.1113.0161*6	1	M14x260 DIN 931-8.8
355	4.1201.0259.0	1	
356	9.1091.0008*1	2	40x14,3x1,5 DIN 2093
357	4.1203.0219.0	1	
358	9.1030.0015*6	2	M14 DIN 985-8
359	9.1113.0119*6	1	M14x30 DIN 933-8.8
360	9.1048.0053*5	1	A15 DIN 125 [—]

REF.	ONDERDEELNR. PART NUMBER REFERENCE TEILNUMMER	AANTAL QUANTITY QUANTITE ANZAHL		
------	--	--	--	--

371	9.1030.0015*6	2	M14 DIN 985-8	
372	9.1048.0053*5	2	A15 DIN 125 [—]	
373	9.1091.0012*5	1	50x18,3x3 DIN 2093	
374	9.1105.0009.2	1		
375	4.1201.0221.0	1		
376	9.1113.0160*5	1	M14x200 DIN 931-8.8	
377	9.1113.0119*6	1	M14x30 DIN 933-8.8	
378	4.1201.0231.0	1		
379	4.1201.0259.0	1		
380	4.1201.0241.0	1		
398	4.1203.0210.0	1	= REF. 351-360	280
399	4.1219.0090.0	1	= REF. 371-380	320

LELY

OPTIMO	type number type number numéro de type Typnummer	vanaf serienummer as from serial number après numéro de serie ab Seriennummer
320	4.1219.0014.1	1010 - 0501



E031-06-20

REF.	ONDERDEELNR. PART NUMBER REFERENCE TEILNUMMER	AANTAL QUANTITY QUANTITE ANZAHL	
------	--	--	--

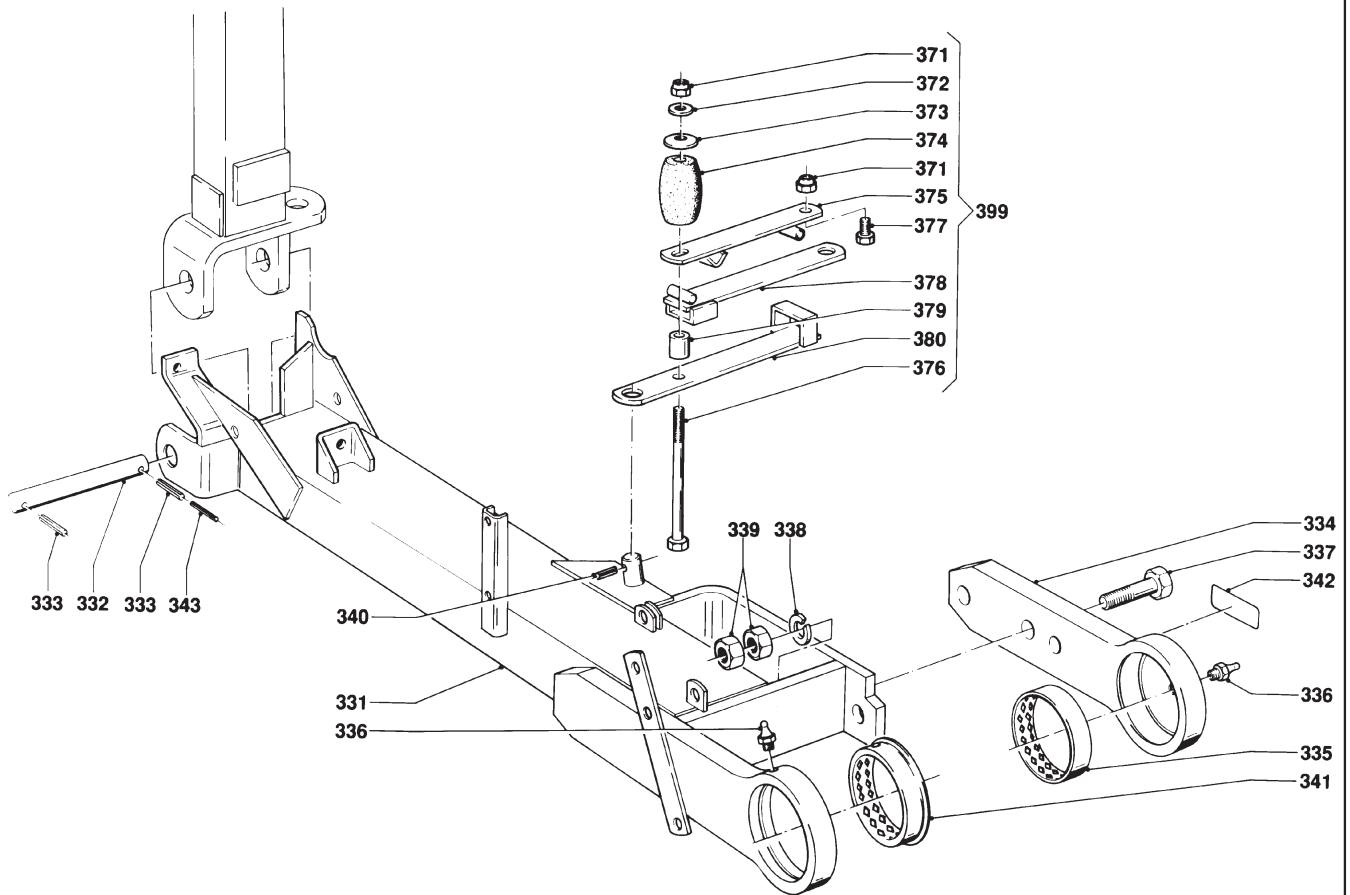
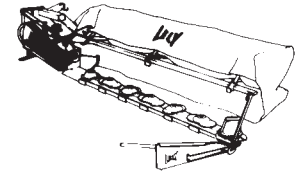
331	4.1225.0241.0	1	
332	4.1207.0610.0	1	
333	9.1070.0038.3	2	Ø10x75 DIN 1481
334	4.1207.0580.0	1	
335	4.1201.1482.0	1	
336	9.1068.0007*2	2	AM8x1,25 DIN 71412
337	9.1113.0094*2	3	M20x90 DIN 931-8.8
338	9.1121.0014*5	3	A20 DIN 127 [—]
339	9.1029.0016*1	6	M20 DIN 934-8
340	9.1070.0028.0	1	Ø10x60 DIN 1481
341	4.1207.0620.0	1	
342	9.1170.0205.0	2	"Smeerpunt" "Greasing point" "Point de graissage" "Schmierstelle"
343	9.1070.0062.6	1	Ø6x75 DIN 1481

REF.	ONDERDEELNR. PART NUMBER REFERENCE TEILNUMMER	AANTAL QUANTITY QUANTITE ANZAHL	
------	--	--	--

371	9.1030.0015*6	2	M14 DIN 985-8
372	9.1048.0053*5	1	A15 DIN 125 [—]
373	9.1091.0012*5	1	50x18,3x3 DIN 2093
374	9.1105.0009.2	1	
375	4.1219.0111.0	1	
376	9.1113.0160*5	1	M14x200 DIN 931-8.8
377	9.1113.0119*6	1	M14x30 DIN 933-8.8
378	4.1219.0120.0	1	
379	4.1219.0098.0	1	
380	4.1219.0130.0	1	
399	4.1219.0090.0	1	= REF. 371-380

LELY

OPTIMO	type number type number numéro de type Typnummer	vanaf serienummer as from serial number après numéro de serie ab Seriennummer
320	4.1219.0015.1	10113 - 0501



E031-06-20

REF.	ONDERDEELNR. PART NUMBER REFERENCE TEILNUMMER	AANTAL QUANTITY QUANTITE ANZAHL	
------	--	--	--

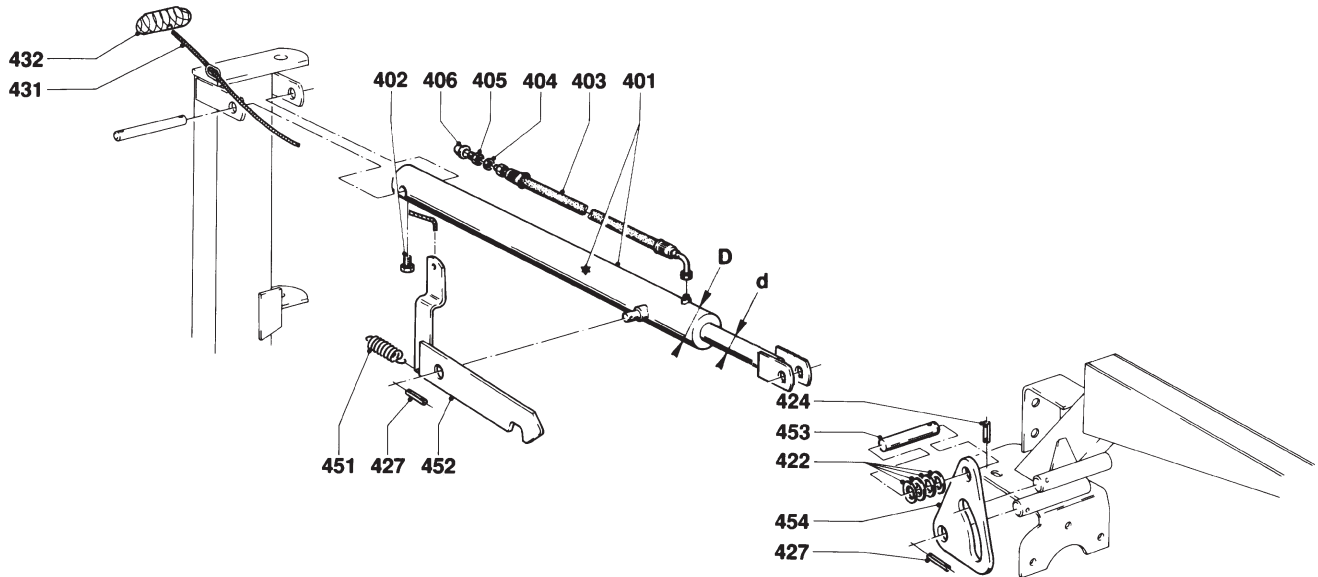
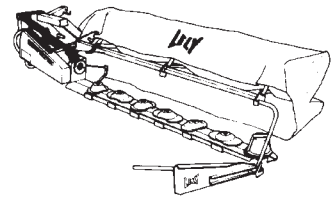
331	4.1225.0241.0	1	
332	4.1207.0610.0	1	
333	9.1070.0038.3	2	Ø10x75 DIN 1481
334	4.1207.0580.0	1	
335	4.1201.1482.0	1	
336	9.1068.0007*2	3	AM8x1,25 DIN 71412
337	9.1113.0094*2	3	M20x90 DIN 931-8.8
338	9.1121.0014*5	3	A20 DIN 127 [—]
339	9.1029.0016*1	6	M20 DIN 934-8
340	9.1070.0028.0	1	Ø10x60 DIN 1481
341	4.1207.0620.0	1	
342	9.1170.0205.0	2	"Smeerpunt" "Greasing point" "Point de graissage" "Schmierstelle"
343	9.1070.0062.6	1	Ø6x75 DIN 1481

REF.	ONDERDEELNR. PART NUMBER REFERENCE TEILNUMMER	AANTAL QUANTITY QUANTITE ANZAHL	
------	--	--	--

371	9.1030.0015*6	2	M14 DIN 985-8
372	9.1048.0053*5	1	A15 DIN 125 [—]
373	9.1091.0012*5	1	50x18,3x3 DIN 2093
374	9.1105.0009.2	1	
375	4.1219.0111.0	1	
376	9.1113.0160*5	1	M14x200 DIN 931-8.8
377	9.1113.0178*2	1	M14x35 DIN 933-10.9
378	4.1219.0121.0	1	
379	4.1219.0098.0	1	
380	4.1219.0130.0	1	
399	4.1219.0090.0	1	= REF. 371-380

LELY

OPTIMO	type number type number numéro de type Typnummer	vanaf serienummer as from serial number après numéro de série ab Seriennummer
280	4.1210.0010.1	972 - 0501
320	4.1219.0010.1	972 - 0501
320	4.1219.0011.1	993 - 0501
320	4.1219.0012.1	1003 - 0501



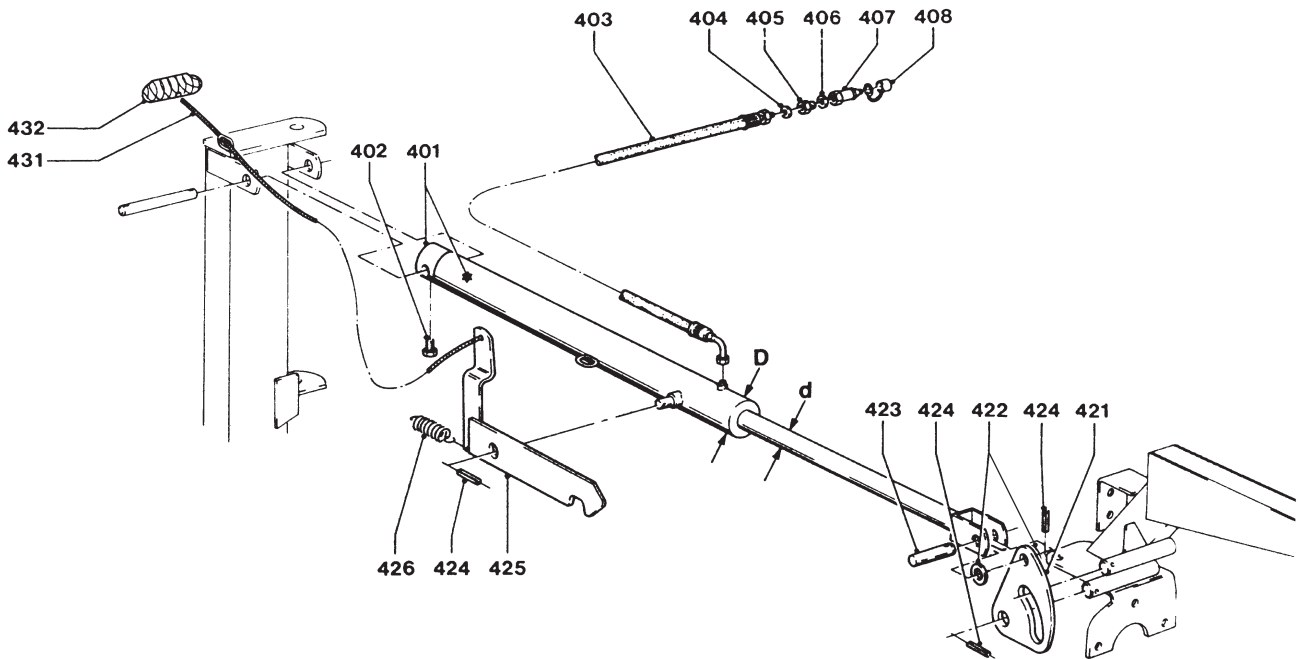
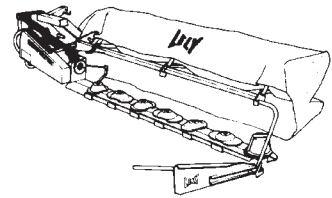
E005-04-11

REF.	ONDERDEELNR. PART NUMBER REFERENCE TEILNUMMER	AANTAL QUANTITY QUANTITE ANZAHL	
401	4.1210.0040.0	1	(401= 401+ ★ +402)
★	4.1210.0049.0	(1)	(d= Ø30, D= Ø60/70) [A+A][x]
402	9.1150.0004.1	(1)	M14x1,5
403	4.1016.0530.0	1	L= 2060 mm
404	9.1137.0401.5	-	Ø14x20x1,5 Cu []
405	9.1137.0606.0	-	3/8"-1/4"
	9.1137.0604.5	-	M18x1,5-1/4"
	9.1137.0603.4	-	1/2"-1/4"
	9.1137.0608.2	-	M22x1,5-1/4"
406	9.1108.0030.6	-	3/8"
	9.1108.0032.1	-	M18
	9.1108.0023.6	-	1/2"
	9.1108.0035.5	-	M22

REF.	ONDERDEELNR. PART NUMBER REFERENCE TEILNUMMER	AANTAL QUANTITY QUANTITE ANZAHL	
422	9.1048.0019*6	4	A21 DIN 125 []
424	9.1070.0019.5	1	Ø6x50 DIN 1481
427	9.1070.0023.2	3	Ø8x50 DIN 1481
431	4.1201.1462.0	1	Ø6x4m (1m= 9.1163.0004.2)
432	2.3201.0328.0	1	
451	9.1089.0013.1	1	
452	4.1210.0520.0	1	OPTIMO 280
	4.1219.0100.0	1	OPTIMO 320
453	4.1210.1495.0	1	
454	4.1210.1494.0	1	

LELY

OPTIMO	type number type number numéro de type Typnummer	vanaf serienummer as from serial number après numéro de serie ab Seriennummer
320	4.1219.0014.1	1010 - 0501
320	4.1219.0015.1	10113 - 0501



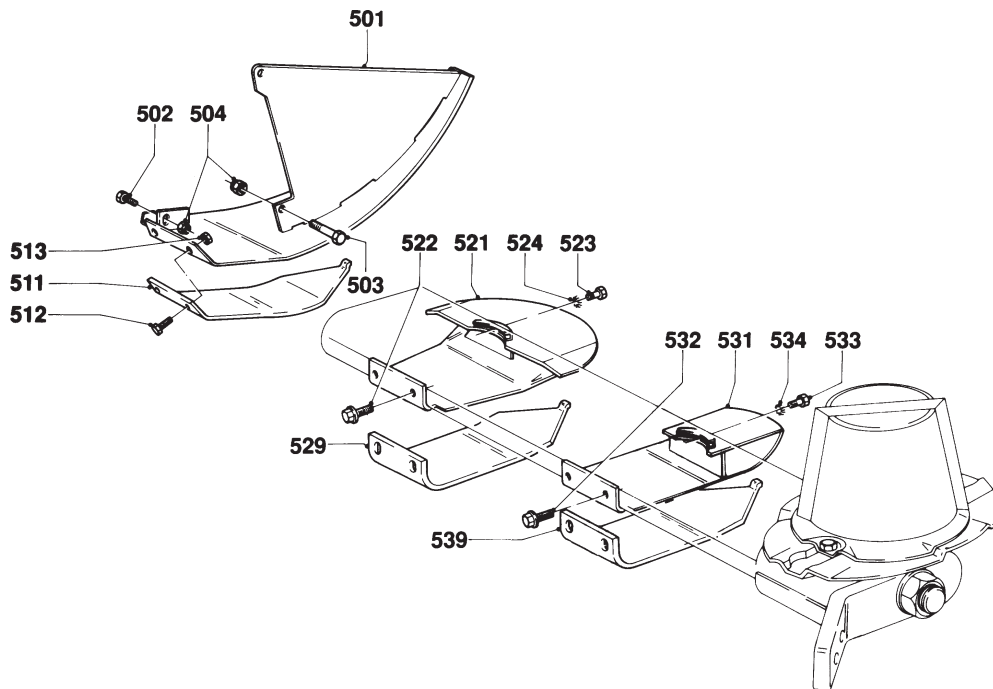
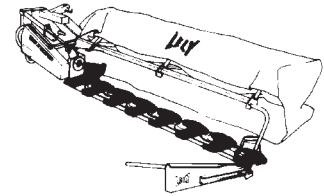
E005-06-10

REF.	ONDERDEELNR. PART NUMBER REFERENCE TEILNUMMER	AANTAL QUANTITY QUANTITE ANZAHL	
401	4.1210.0041.0	1	(401= 401+ ★ +402)
★	4.1207.0399.0	(1)	(d= Ø35, D= Ø60/70) [A+A][x]
402	9.1150.0004.1	(1)	M14x1,5
403	4.1016.0530.0	1	L= 2060 mm
404	9.1137.0401.5	1	Ø14x20x1,5 Cu []
405	9.1137.0603.4	1	1/2"-1/4"
406	9.1137.0402.6	1	Ø22x29x1,5 Cu []
407	9.1137.0302.4	1	1/2" G
408	9.1137.0303.5	1	1/2" PVC

REF.	ONDERDEELNR. PART NUMBER REFERENCE TEILNUMMER	AANTAL QUANTITY QUANTITE ANZAHL	
421	4.1223.0199.0	1	
422	9.1048.0045*4	2	26 DIN 126 []
423	4.1225.1498.0	1	
424	9.1070.0023.2	4	Ø8x50 DIN 1481
425	4.1225.0300.0	1	
426	9.1089.0014.2	1	
431	4.1201.1462.0	1	Ø6x4m (1m= 9.1163.0004.2)
432	2.3201.0328.0	1	

LELY

OPTIMO	type number type number numéro de type Typnummer	vanaf serienummer as from serial number après numéro de serie ab Seriennummer
280	4.1210.0010.1	972 - 0501
320	4.1219.0010.1	972 - 0501
320	4.1219.0011.1	993 - 0501
320	4.1219.0012.1	1003 - 0501



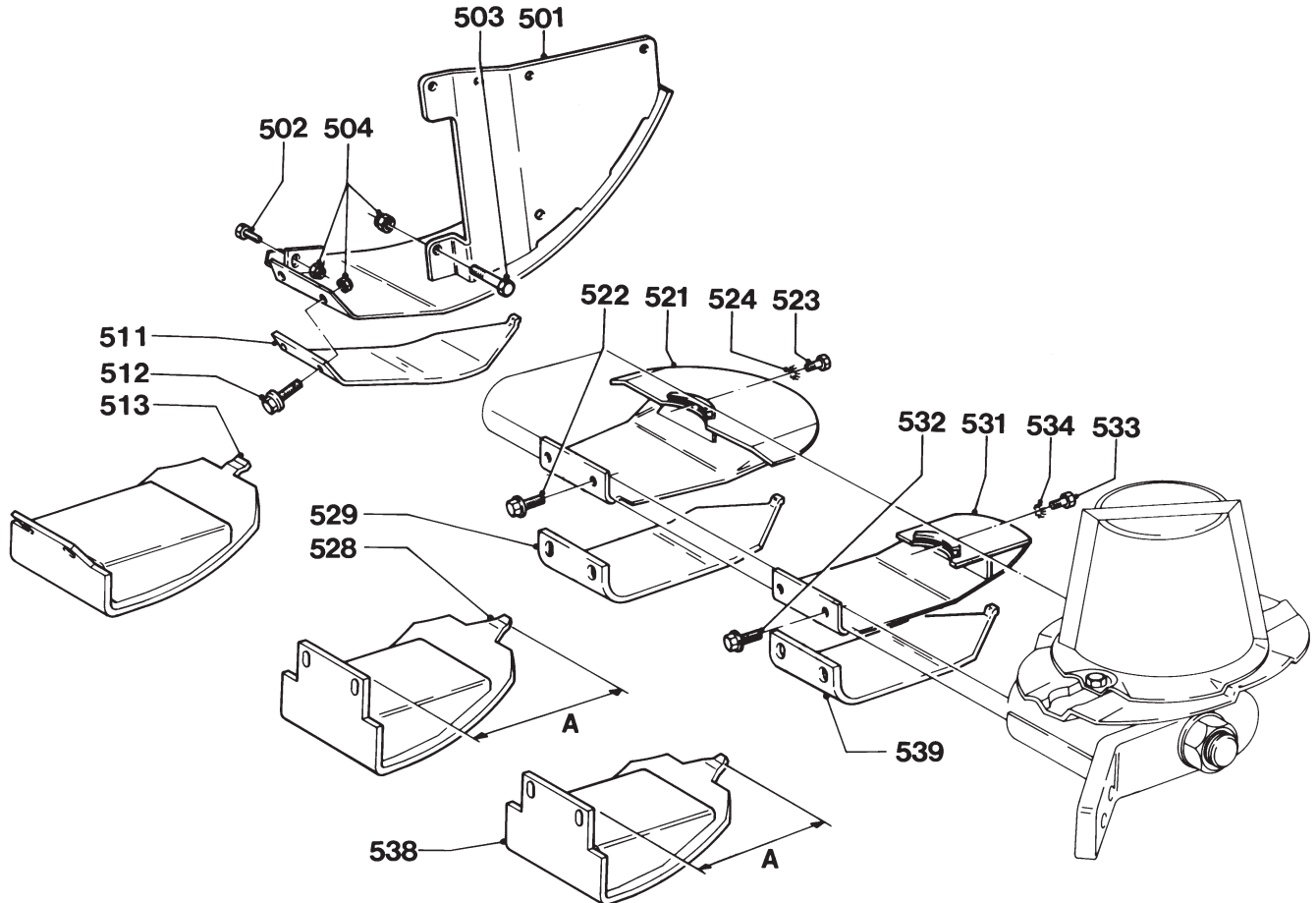
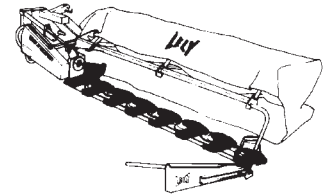
E006-06-10

REF.	ONDERDEELNR. PART NUMBER REFERENCE TEILNUMMER	AANTAL QUANTITY QUANTITE ANZAHL	
501	4.1201.0361.0	1	
502	9.1113.0117*4	1	M10x35 DIN 933-8.8
503	9.1113.0041*5	1	M10x70 DIN 931-8.8
504	9.1030.0004*2	4	M10 DIN 985-8
511	4.1201.2003.0	(1)	3 mm Slijtplaat
	4.1201.2006.0	1	6 mm Wear plate
			Plaque d'usure
			Verschleissplatte
512	9.1114.0009*0	2	M10x30 8.8
		280/320	
521	4.1201.0410.0	7/8	Brede glijsloffen Wide skids Patins larges Breite Gleitkufen
522	9.1114.0009*0	14/16	M10x30 8.8
523	9.1113.0267*0	7/8	M8x16 DIN 933-10.9
524	9.1051.0001*6	7/8	A8,2 DIN 6798 [//////]
529	4.1201.2002.0	(7/8)	3 mm Slijtplaten
	4.1201.2005.0	7/8	6 mm Wear plates
			Plaques d'usure
			Verschleissplatten

REF.	ONDERDEELNR. PART NUMBER REFERENCE TEILNUMMER	AANTAL QUANTITY QUANTITE ANZAHL	
		280/320	
531	4.1201.2200.0	7/8	Smalle glijsloffen Narrow skids Patins étroits Schmale Gleitkufen
532	9.1114.0009*0	14/16	M10x30 8.8
533	9.1113.0267*0	7/8	M8x16 DIN 933-10.9
534	9.1051.0001*6	7/8	A8,2 DIN 6798 [//////]
539	4.1201.2004.0	(7/8)	3 mm Slijtplaten
	4.1201.2007.0	7/8	6 mm Wear plates
			Plaques d'usure
			Verschleissplatten

LELY

OPTIMO	type nummer type number numéro de type Typnummer	vanaf serienummer as from serial number après numéro de serie ab Seriennummer
320	4.1219.0014.1	1010 - 0501
320	4.1219.0015.1	10113 - 0501



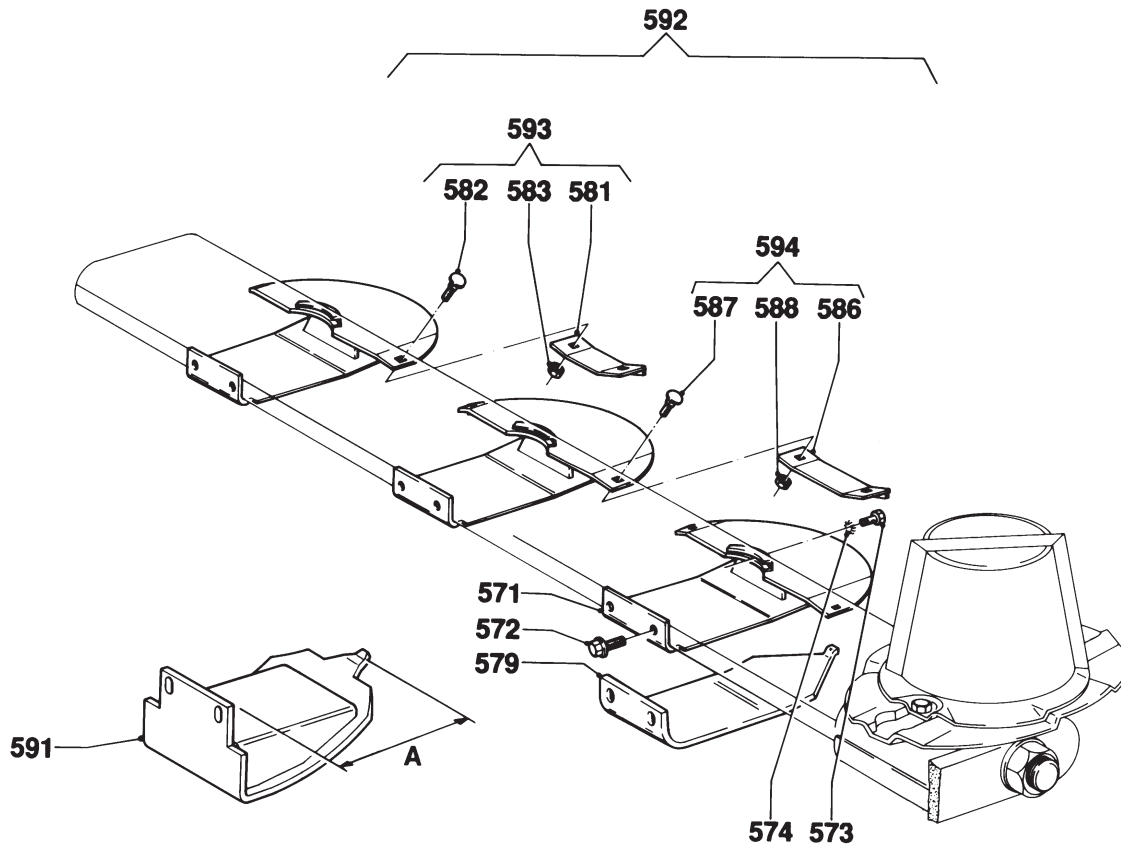
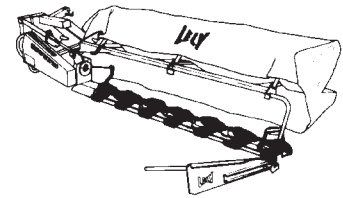
E006-09-00

REF.	ONDERDEELNR. PART NUMBER REFERENCE TEILNUMMER	AANTAL QUANTITY QUANTITE ANZAHL	
501	4.1201.0362.0	1	
502	9.1113.0117*4	1	M10x35 DIN 933-8.8
503	9.1113.0041*5	1	M10x70 DIN 931-8.8
504	9.1030.0004*2	4	M10 DIN 985-8
511	4.1201.2003.0	(1)	3 mm Slijtplaat
	4.1201.2006.0	1	6 mm Wear plate
			Plaque d'usure
			Verschleissplatte
512	9.1114.0009*0	2	M10x30 8.8
513	4.1201.2490.0	1	
521	4.1201.0410.0	8	Brede glijsloffes Wide skids Patins larges Breite Gleitkufen
522	9.1114.0009*0	16	M10x30 8.8
523	9.1113.0267*0	8	M8x16 DIN 933-10.9
524	9.1051.0001*6	8	A8,2 DIN 6798 [//////]
528	4.1201.2470.0	4-8	A= 282 mm
529	4.1201.2002.0	(8)	3 mm Slijtplaten
	4.1201.2005.0	8	6 mm Wear plates
			Plaques d'usure
			Verschleissplatten

REF.	ONDERDEELNR. PART NUMBER REFERENCE TEILNUMMER	AANTAL QUANTITY QUANTITE ANZAHL	
531	4.1201.2200.0	8	Smalle glijsloffes Narrow skids Patins étroits Schmale Gleitkufen
532	9.1114.0009*0	16	M10x30 8.8
533	9.1113.0267*0	8	M8x16 DIN 933-10.9
534	9.1051.0001*6	8	A8,2 DIN 6798 [//////]
538	4.1201.2461.0	4-8	A= 252 mm
539	4.1201.2004.0	(8)	3 mm Slijtplaten
	4.1201.2007.0	8	6 mm Wear plates
			Plaques d'usure
			Verschleissplatten

LELY

OPTIMO	type nummer type number numéro de type Typnummer	vanaf serienummer as from serial number après numéro de serie ab Seriennummer
280	4.1210.0010.1	972 - 0501
320	4.1219.0010.1	972 - 0501
	4.1219.0011.1	993 - 0501
	4.1219.0012.1	1003 - 0501
	4.1219.0014.1	1010 - 0501
	4.1219.0015.1	10113 - 0501



E048-03-20

REF.	ONDERDEELNR. PART NUMBER REFERENCE TEILNUMMER	AANTAL QUANTITY QUANTITE ANZAHL
------	--	--

GLIJSLOFFEN (voorbereid voor maaibalk-steenbescherming) = 571
 SKIDS (prepared for cutter bar stone protection) = 571
 PATINS (préparés pour kit de protection anti-pierres) = 571
 GLEITKUFEN (für Mähbalken-Steinschutzsatz vorbereitet) = 571

571	4.1201.0420.0	7/8
572	9.1114.0009*0	14/16
573	9.1113.0267*0	7/8
574	9.1051.0001*6	7/8

579	4.1201.2004.0	(7/8)	3 mm	Slijtplaten
	4.1201.2007.0	7/8	6 mm	Wear plates Plaques d'usure Verschleissplatten

581	4.1201.0430.0	1x	[←125→]
582	9.1058.0027*4	2x	M10x25 DIN 603
583	9.1030.0004*2	2x	M10 DIN 985-8

586	4.1202.2030.0	1	[←160→]
587	9.1058.0027*4	2	M10x25 DIN 603
588	9.1030.0004*2	2	M10 DIN 985-8

REF.	ONDERDEELNR. PART NUMBER REFERENCE TEILNUMMER	AANTAL QUANTITY QUANTITE ANZAHL
------	--	--

280 320
 591 4.1201.2461.0 4-7 4-8 A= 252 mm
 Onder glijslof 531/571
 Underneath skid 531/571
 Au-dessous du patin 531/571
 Unter Gleitkufen 531/571

592	4.1210.0000.7	1 -	= REF. 571-588 (6 mm)
	4.1219.0000.7	- 1	= REF. 571-583 (6 mm)

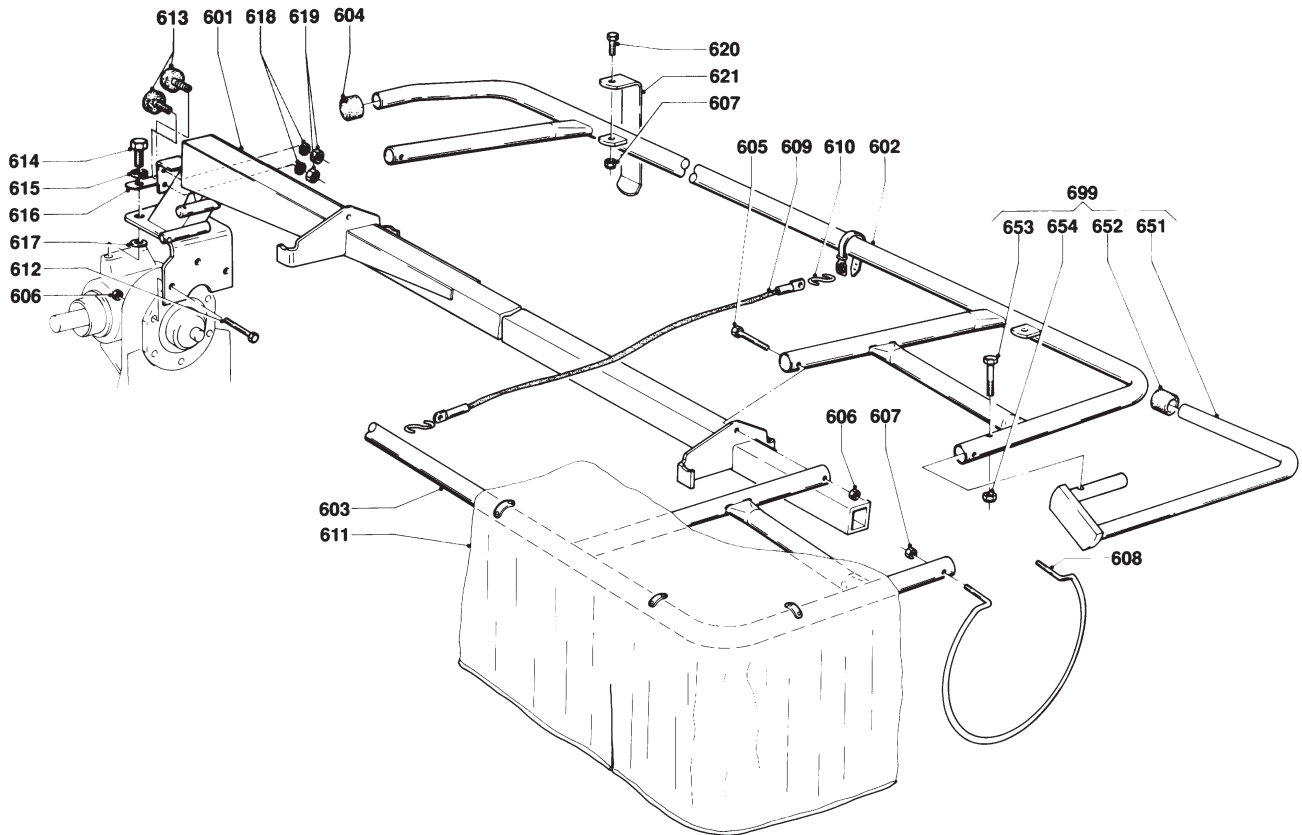
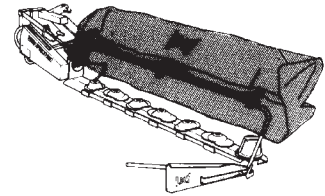
-	4.1210.0000.6	1 -	= REF. 593+594
	4.1219.0000.6	- 1	= REF. 593

593	4.1201.0450.0	5 7	= REF. 581-583 [←125→]
-----	---------------	-----	------------------------

594	4.1202.2040.0	1 -	= REF. 586-588 [←160→]
-----	---------------	-----	------------------------

LELY

OPTIMO	type number type number numéro de type Typnummer	vanaf serienummer as from serial number après numéro de serie ab Seriennummer
280	4.1210.0010.1	972 - 0501
320	4.1219.0010.1	972 - 0501
320	4.1219.0011.1	993 - 0501
320	4.1219.0012.1	1003 - 0501



E007-08-00

REF.	ONDERDEELNR. PART NUMBER REFERENCE TEILNUMMER	AANTAL QUANTITY QUANTITE ANZAHL
------	--	--

280 320

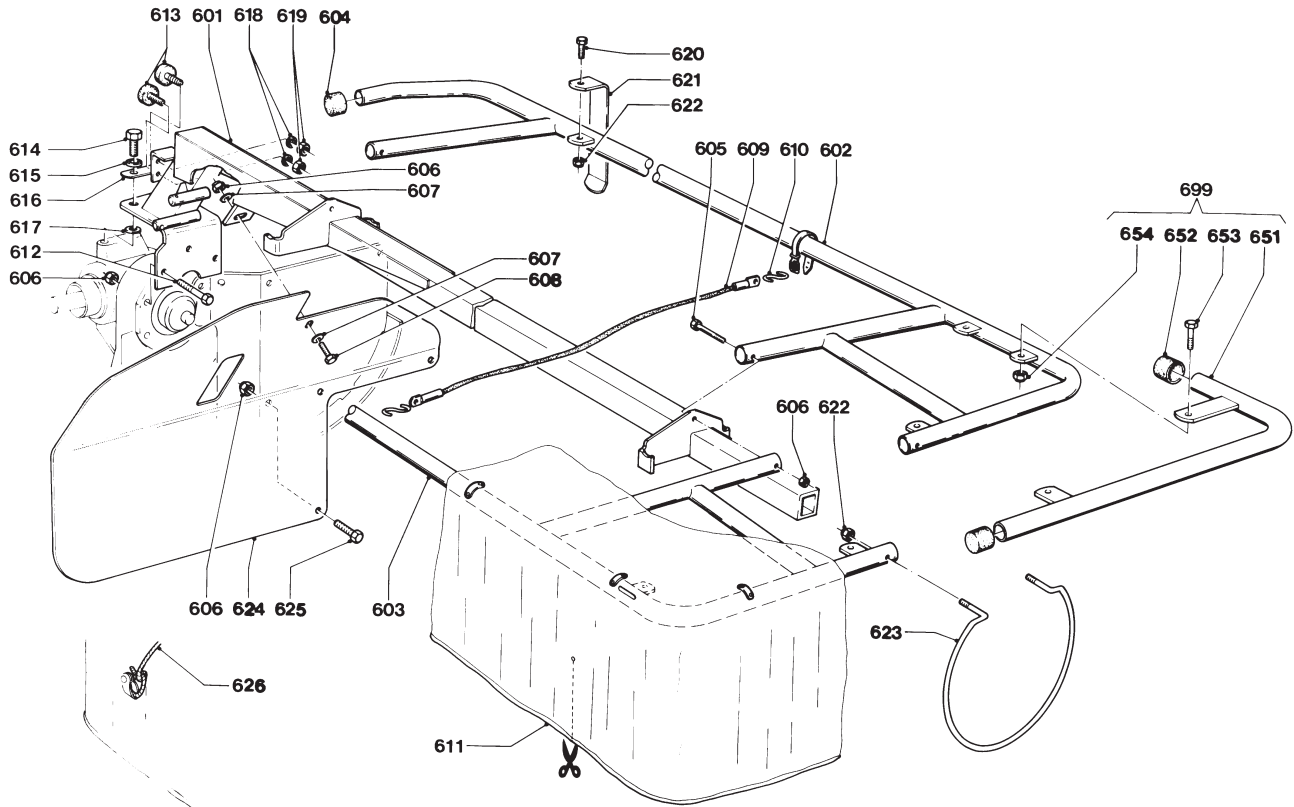
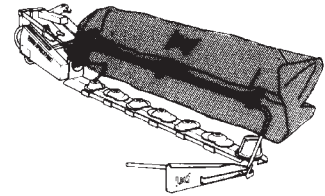
601	4.1210.0581.0 4.1219.0050.0	1 - - 1
602	4.1210.0541.0 4.1219.0070.0	1 - - 1
603	4.1210.0551.0 4.1219.0080.0	1 - - 1
604	9.1108.0059.1	2 2 Ø34
605	9.1113.0100*1	3 3 M10x90 DIN 931-8.8
606	9.1030.0004*2	5 5 M10 DIN 985-8
607	9.1030.0012*3	6 6 M8 DIN 985-8
608	4.1210.1496.0	1 1
609	4.1210.1498.0	3 3
610	9.1147.0005*5	6 6 No. 50
611	4.1210.1499.0 4.1219.0199.0	1 - - 1

REF.	ONDERDEELNR. PART NUMBER REFERENCE TEILNUMMER	AANTAL QUANTITY QUANTITE ANZAHL
------	--	--

612	9.1113.0156*1	2 M10x85 DIN 931-10.9
613	9.1105.0011.4	2 M10x28
614	9.1113.0178*2	2 M14x35 DIN 933-10.9
615	9.1051.0005*3	2 A14,5 DIN 6798 [//////]
616	4.1201.1479.0	1
617	9.1048.0053*5	2 A15 DIN 125 [———]
618	9.1051.0002*0	2 A10,5 DIN 6798 [//////]
619	9.1029.0005*4	2 M10 DIN 934-8
620	9.1113.0014*6	4 M8x20 DIN 933-8.8
621	4.1211.0287.0	4

LELY

OPTIMO	type number type number numéro de type Typnummer	vanaf serienummer as from serial number après numéro de serie ab Seriennummer
320	4.1219.0014.1	1010 - 0501
320	4.1219.0015.1	10113 - 0501



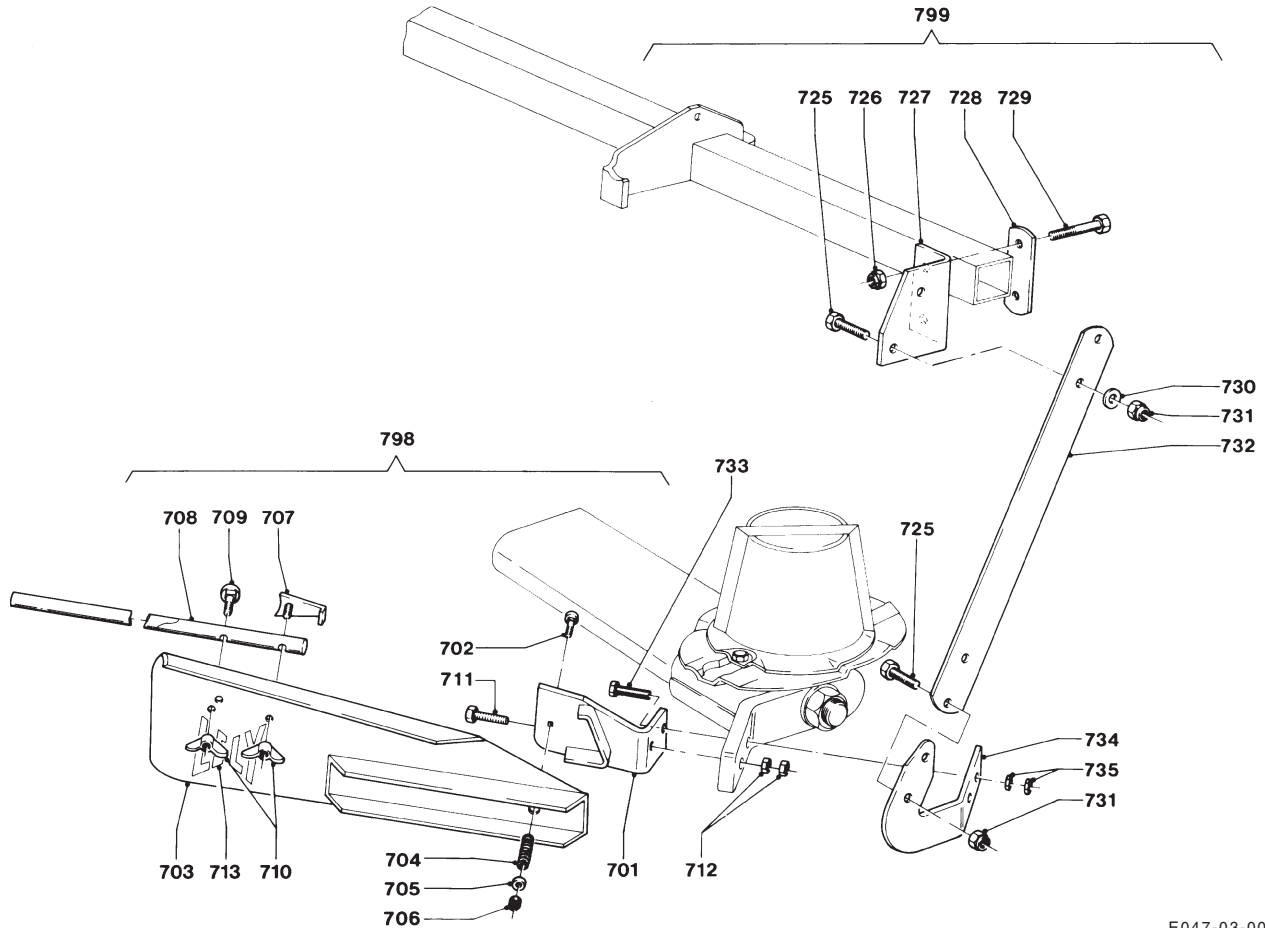
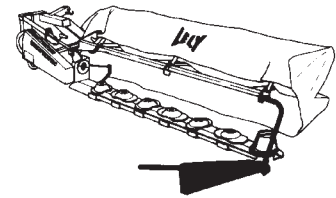
E007-09-20

REF.	ONDERDEELNR. PART NUMBER REFERENCE TEILNUMMER	AANTAL QUANTITY QUANTITE ANZAHL	
601	4.1219.0051.0	1	
602	4.1219.0071.0	1	
603	4.1219.0081.0	1	
604	9.1108.0059.1	2	Ø34
605	9.1113.0100*1	3	M10x90 DIN 931-8.8
606	9.1030.0004*2	9	M10 DIN 985-8
607	9.1048.0007*1	2	A10,5 DIN 125 []
608	9.1113.0029*0	1	M10x25 DIN 933-8.8
609	4.1210.1498.0	3	
610	9.1147.0005*5	6	No. 50
611	4.1219.0195.0	1	
612	9.1113.0156*1	2	M10x85 DIN 931-10.9
613	9.1105.0011.4	2	M10x28
614	9.1113.0178*2	2	M14x35 DIN 933-10.9
615	9.1051.0005*3	2	A14,5 DIN 6798 [////]
616	4.1201.1479.0	1	
617	9.1048.0053*5	2	A15 DIN 125 []
618	9.1051.0002*0	2	A10,5 DIN 6798 [////]
619	9.1029.0005*4	2	M10 DIN 934-8
620	9.1113.0014*6	4	M8x20 DIN 933-8.8
621	4.1211.0287.0	4	
622	9.1030.0012*3	8	
623	4.1210.1496.0	1	
624	4.1201.1461.0	1	
625	9.1113.0027*5	3	M10x20 DIN 933-8.8
626	4.1201.1458.0	1	Ø6x0,9m (1m= 9.1163.0004.2)

REF.	ONDERDEELNR. PART NUMBER REFERENCE TEILNUMMER	AANTAL QUANTITY QUANTITE ANZAHL	
651	4.1201.0640.0	2	
652	9.1108.0059.1	4	Ø34
653	9.1113.0128*1	4	M8x25 DIN 933-8.8
654	9.1030.0012*3	4	M8 DIN 985-8
699	4.1201.0630.0	1	= REF. 651-654 (= 2x)

LELY

OPTIMO	type number type number numéro de type Typnummer	vanaf serienummer as from serial number après numéro de serie ab Seriennummer
280	4.1210.0010.1	972 - 0501
320	4.1219.0010.1	972 - 0501
	4.1219.0011.1	993 - 0501
	4.1219.0012.1	1003 - 0501
	4.1219.0014.1	1010 - 0501
	4.1219.0015.1	10113 - 0501



E047-03-00

REF.	ONDERDEELNR. PART NUMBER REFERENCE TEILNUMMER	AANTAL QUANTITY QUANTITE ANZAHL
------	--	--

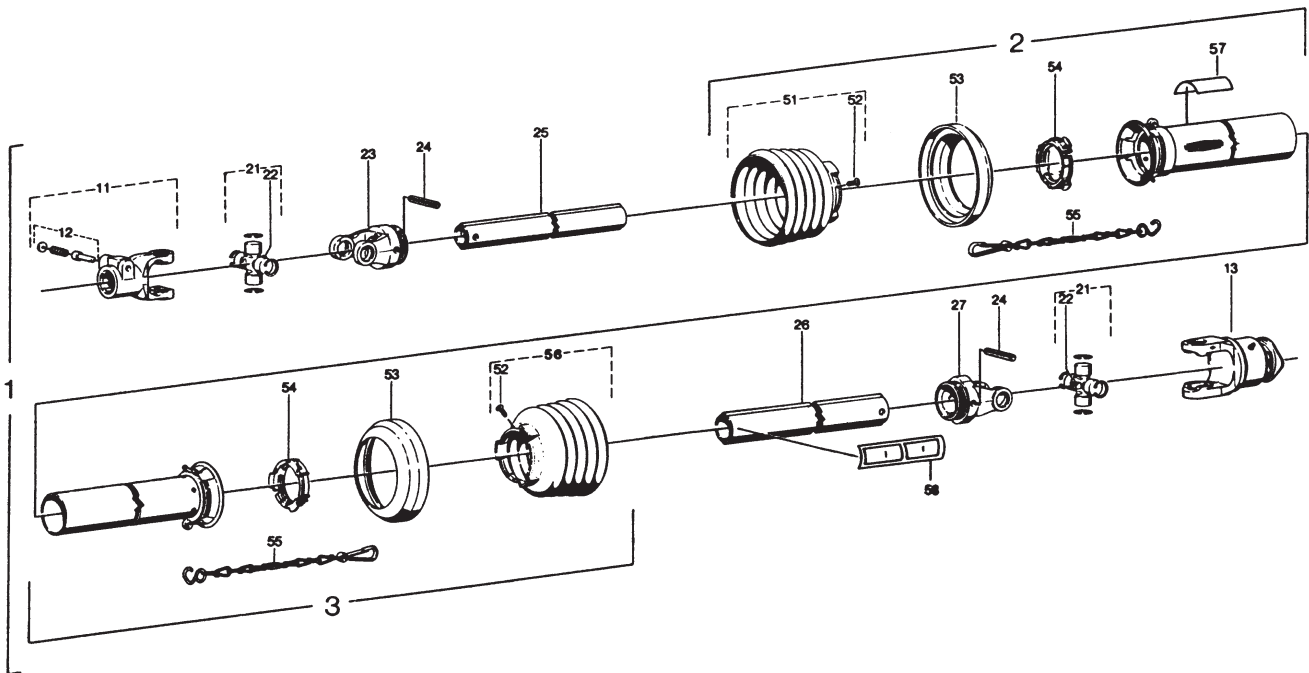
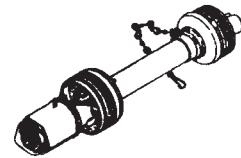
701	4.1201.0331.0	1	
702	9.1058.0030*0	1	M12x80 DIN 603
703	4.1201.0530.0	1	
704	9.1090.0012*6	1	
705	9.1048.0012*6	1	A13 DIN 125 []
706	9.1030.0013*4	3	M12 DIN 985-8
707	4.1201.0600.0	1	
708	4.1201.1476.0	1	
709	9.1058.0035*5	1	M8x45 DIN 603
710	9.1032.0002*5	2	M8 DIN 315-G-5
711	9.1113.0221*3	2	M12x60 DIN 933-8.8
712	9.1029.0008*0	4	M12 DIN 934-8
713	9.1170.0001.6	1	"LELY"
798	4.1201.0110.0	1	= REF. 701-713

REF.	ONDERDEELNR. PART NUMBER REFERENCE TEILNUMMER	AANTAL QUANTITY QUANTITE ANZAHL
------	--	--

725	9.1113.0117*4	4	M10x35 DIN 933-8.8
726	9.1030.0013*4	2	M12 DIN 985-8
727	4.1219.0196.0	1	
728	4.1207.0190.0	1	
729	9.1113.0063*6	2	M12x85 DIN 931-8.8
730	9.1048.0062*0	2	A10 DIN 7349 []
731	9.1030.0004*2	4	M10 DIN 985-8
732	4.1219.0197.0	1	
733	9.1113.0221*3	2	M12x60 DIN 933-8.8
	9.1113.0055*5	(2)	M12x50 DIN 931-8.8
734	4.1219.0198.0	1	
735	9.1029.0008*0	4	M12 DIN 934-8
799	4.1203.0220.0	1	= REF. 725-735

LELY

OPTIMO	type number type number numéro de type Typnummer	vanaf serienummer as from serial number après numéro de serie ab Seriennummer
280	4.1210.0010.1	972 - 0501
320	4.1219.0010.1	972 - 0501
320	4.1219.0011.1	993 - 0501
320	4.1219.0012.1	1003 - 0501



Ew001-04-00

REF.	ONDERDEELNR. PART NUMBER REFERENCE TEILNUMMER	AANTAL QUANTITY QUANTITE ANZAHL	
------	--	--	--

1	9.1154.0083.6	1	W2400-SD25-860-F5/1R = REF. 2-58
---	---------------	---	-------------------------------------

2	85.205	1	SDH25; L= 595 mm
3	85.204	1	SDH25; L= 590 mm

11	35.10.00	1	1.3/8" (6)
12	33.91.07	1	AGRASET 101
13	56.144.40	1	F5/1R-2400-1.3/8" (6)

21	35.00.00	2	
22	63.27.00	2	BM8x1
23	35.13.00	1	RG2400-1b
24	61.05.08	2	Ø10x80 DIN 1481
25	75.25.95	1	1bGA; L= 740 mm
26	75.36.15	1	2aG; L= 715 mm
27	35.14.00	1	RG2400-2a

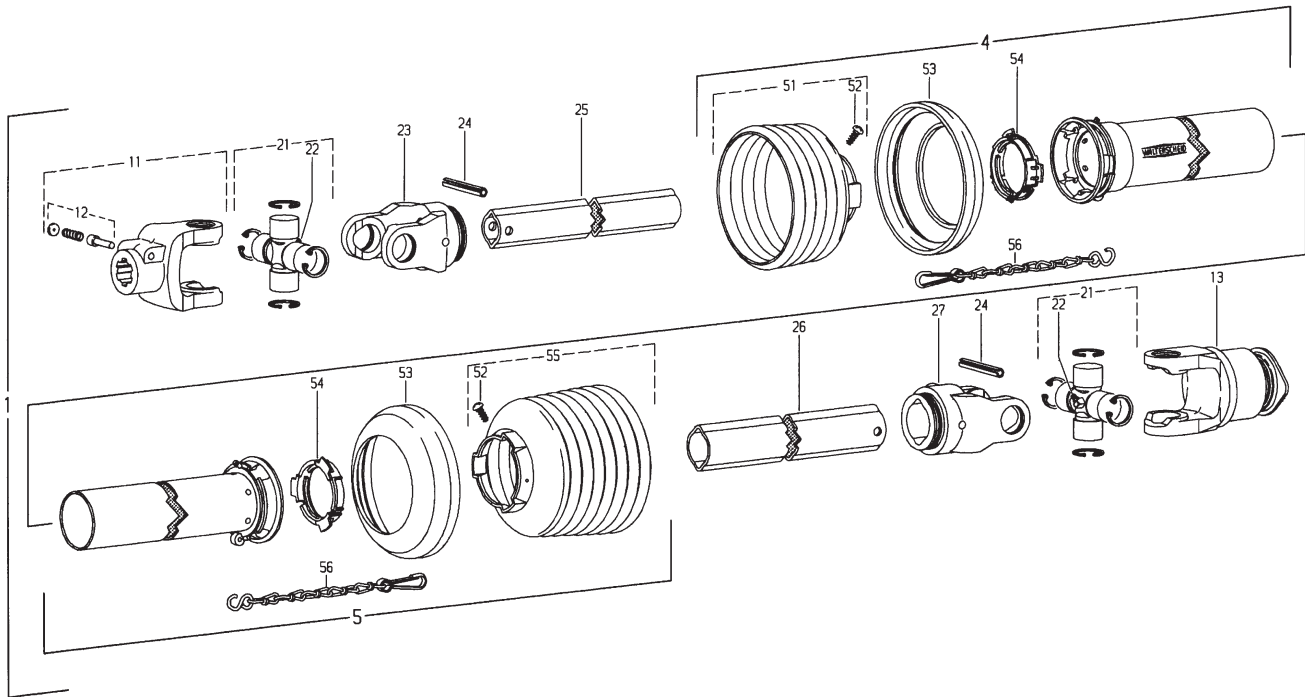
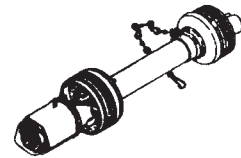
51	85.25.06	1	n= 6
52	60.15.00	2	4x10
53	82.85.00	2	
54	82.83.04	2	
55	82.36.03	2	
56	85.25.08	1	n= 8

57	38.33.33	1	"DANGER-ROTATING DRIVELINE"
58	38.33.34	1	"DANGER-SHIELD MISSING DO NOT OPERATE"

REF.	ONDERDEELNR. PART NUMBER REFERENCE TEILNUMMER	AANTAL QUANTITY QUANTITE ANZAHL	
------	--	--	--

LELY

OPTIMO	type number type number numéro de type Typnummer	vanaf serienummer as from serial number après numéro de serie ab Seriennummer
320	4.1219.0014.1	1010 - 0501
320	4.1219.0015.1	10113 - 0501



Ew001-05-00

REF.	ONDERDEELNR. PART NUMBER REFERENCE TEILNUMMER	AANTAL QUANTITY QUANTITE ANZAHL	
------	--	--	--

1	9.1154.0083.6	1	W2400-SD25-860-F5/1R = REF. 4-56
4	85.205	1	SDH25; L= 645 mm
5	85.204	1	SDH25; L= 640 mm
11	35.10.00	1	1.3/8" (6)
12	33.91.07	1	AGRASET 101
13	56.144.40	1	F5/1R-2400-1.3/8" (6)
21	35.00.00	2	
22	63.27.00	2	BM 8x1
23	35.13.00	1	RG2400-1b
24	61.05.08	2	Ø10x80 DIN 1481
25	75.25.95	1	1bGA; L= 740 mm
26	75.36.15	1	2aG; L= 715 mm
27	35.14.00	1	RG2400-2a
51	85.25.06	1	n= 6
52	60.15.00	2	4x10
53	82.85.00	2	
54	82.83.04	2	
55	85.25.08	1	n= 8
56	82.36.03	2	
-	38.33.33	1	"DANGER-ROTATING DRIVELINE"
-	38.33.34	1	"DANGER-SHIELD MISSING DO NOT OPERATE"

REF.	ONDERDEELNR. PART NUMBER REFERENCE TEILNUMMER	AANTAL QUANTITY QUANTITE ANZAHL	
------	--	--	--