

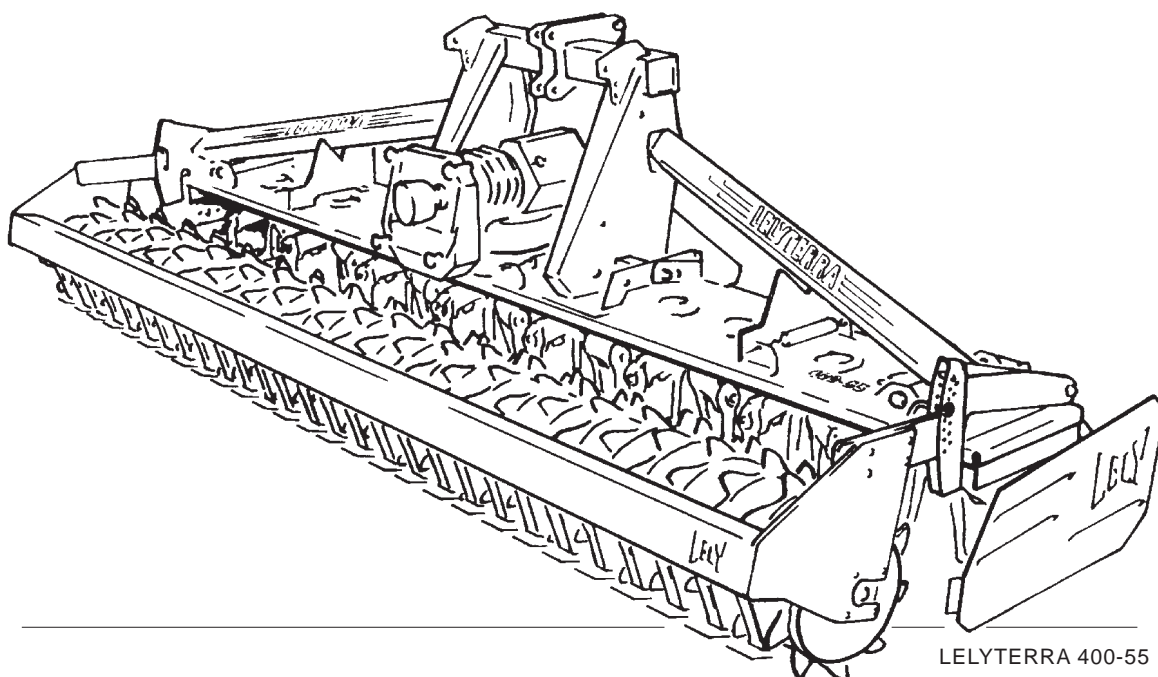


HIGH - TECH  
IN AGRICULTURE

ONDERDELENLIJST  
PARTS LIST  
LISTE DE PIÉCES DE RECHANGE  
ERSATZTEILLISTE

## LELYTERRA - 55

300 / 400



LELYTERRA 400-55

LELYTERRA	type nummer type number numéro de type Typennummer	vanaf serienummer as from serial number après numéro série ab Seriennummer
300 - 55	1.1655.0021.1	10701 - 0501
400 - 55	1.1656.0011.1	10506 - 0501



## ONDERDELEN

Bij het bestellen van onderdelen is het belangrijk dat u het type- en serienummer van uw machine opgeeft. Gebruik alleen originele LELY-onderdelen.

## SPARE PARTS

When ordering spare parts, it is important that you indicate the type and serial number of your machine. Use only genuine LELY parts.

## PIECES DE RECHANGE

En commandant des pièces de rechange il importe que vous indiquiez les numéros de type et de série de votre machine. N'utiliser que des pièces d'origines LELY.

## ERSATZTEILE

Beim Bestellen von Ersatzteilen ist es wichtig, daß Sie die Typ- und Seriennummer Ihrer Maschine angeben. Nur Original-LELY-Ersatzteile verwenden. Typ- und Seriennummer in nebenstehende Abbildung eintragen. Bei künftigen Bestellungen haben Sie die Nummer dann griffbereit.

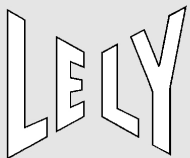
Vul het type- en serienummer hieronder in. Bij toekomstige onderdelenbestellingen heeft u de nummers dan bij de hand.

Complete the box below with the type and serial number. This is an easy reference with a view to future spare parts ordering.

Veillez noter, ci-dessous, les numéros de type et de serie. Ceci est important pour toutes commandes de pièces de rechange.

Verklaring van de in de onderdelenlijst gebruikte tekens. Explanation of signs used in the parts list. Explication des signes qui figurent dans la liste des pièces. Erklärung der in der Ersatzteilliste verwendeten Zeichen.

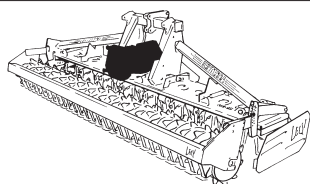
[R]	=	RECHTSE UITVOERING RH VERSION	VERSION DROITE RECHTE AUSFÜHRUNG		
[L]	=	LINKSE UITVOERING LH VERSION  Onder rechtse of linkse uitvoering wordt de plaats van het onderdeel verstaan, gezien van de achterzijde van de machine.  By RH or LH version the position of the part is meant, seen from the rear of the machine	VERSION GAUCHE LINKE AUSFÜHRUNG  Par version droite ou gauche on entend la position de la pièce, vue de l'arrière de la machine.  Die Verweisungen "rechte Ausführung" oder "linke Ausführung" geben die Position des Teils, von der Hinterseite der Maschine aus gesehen, an.		
[RD]	=	RECHTSOM DRAAIENDE UITVOERING RH ROTATING VERSION	VERSION ROTATION A DROITE RECHTSUMDREHENDE AUSFÜHRUNG		
[LD]	=	LINKSOM DRAAIENDE UITVOERING LH ROTATING VERSION  Onder rechtson of linksom draaiende uitvoering wordt de draairichting van het onderdeel verstaan, gezien van de bovenzijde van de machine.  By RH or LH rotating version the sense of rotating of the part is meant, seen from the top of the machine.	VERSION ROTATION A GAUCHE LINKSUMDREHENDE AUSFÜHRUNG  Version rotation à droit: ceci correspond au sens de rotation de la pièce, vue du dessus la machine.  Mit diesen Verweisungen wird die Drehrichtung des Teils von der Oberseite der Maschine aus gesehen, angegeben.		
[x]	=	ONDERDEEL WORDT NIET GETOOND PART IS NOT SHOWN  Bijvoorbeeld linkse uitvoering overeenkomstig de wel getekende rechtse uitvoering.  E.g. : LH version is similar to the RH version, which is actually shown.	PIECE N'EST PAS MONTREE TEIL WIRD NICHT GEZEIGT  Exemple : la version gauche est représentée. La version droite correspond à la version gauche , mais n'est pas représentée.  Beispiel : die linke Ausführung entspricht der effektiv gezeigten Rechten.		
[#]	=	NIET LOS LEVERBAAR NOT AVAILABLE SEPARATELY	VENDU EN KIT UNIQUEMENT NICHT SEPARAT LIEFERBAR		
~	=	AANTAL (INDIEN NODIG) AFHANKELIJK VAN INBOUWMAAT QUANTITY (IF APPLICABLE) DEPENDING UPON ASSEMBLY	QUANTITE (SI NÉCESSAIRE) EN FONCTION DU MONTAGE ANZAHL VOM EINBAUMASS ABHÄNGIG (WENN ERFORDERLICH)		
[—]	=	SLUITRING	WASHER	RONDELLE PLATE	UNTERLEGSCHIEBE
[—/—]	=	VEERRING	SPRING WASHER	RONDELLE GROWER	FEDERRING
[#####]	=	TANDVEERRING	SHAKE-PROOF WASHER	RONDELLE EVENTAIL	RÄNDELFEDEERING
[*]◄	=	OLIEKEERRING	OIL SEAL	ETANCHEITE	ÖLDICHTUNGSRING
[T+T]	=	TANDWIELSET	PAIR OF GEARS	JEU D'ENGRENAGES	ZAHNRÄDERSATZ
[D+D]	=	VULRINGSET	SHIM SET	JEU D'ÉPAISSEURS	PASSSCHEIBENSATZ
[A+A]	=	SET AFDICHTINGSRINGEN	SET OF SEALING RINGS	JEU D'ANNEAUX D'ÉTANCHEITE	DICHTUNGSRINGENSATZ



Inhoud  
Contents  
Index  
Inhalt

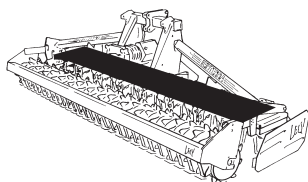
## LELYTERRA 300 / 400 - 55

pagina  
page  
page  
Seite



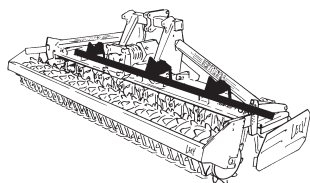
Tandwielkast  
Gearbox  
Boîte d'engrenages  
Getriebe

01/02



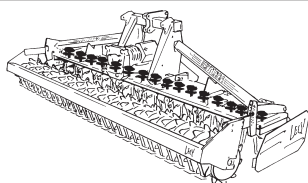
Tandwielgoot  
Gear trough  
Soubassement  
Wanne

03



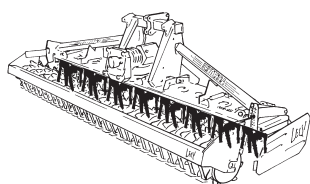
Rotorbeschermer  
Rotor guard  
Protection-rotor  
Rotorenschutz

04



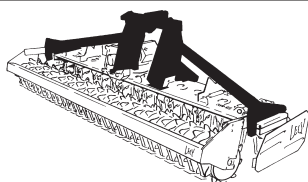
Rotoras  
Rotor shaft  
Axe-rotor  
Rotorachse

05



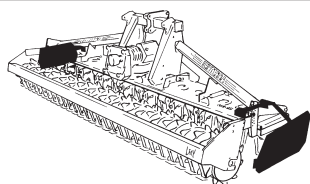
Tanden  
Tines  
Dents  
Zinken

06



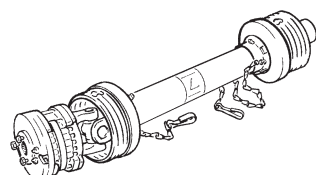
Driepuntsbok  
Headstock  
Tête d'attelage  
Dreipunktturm

07



Grondgeleiders  
Deflectors  
Déflecteurs  
Seitenplatten

08

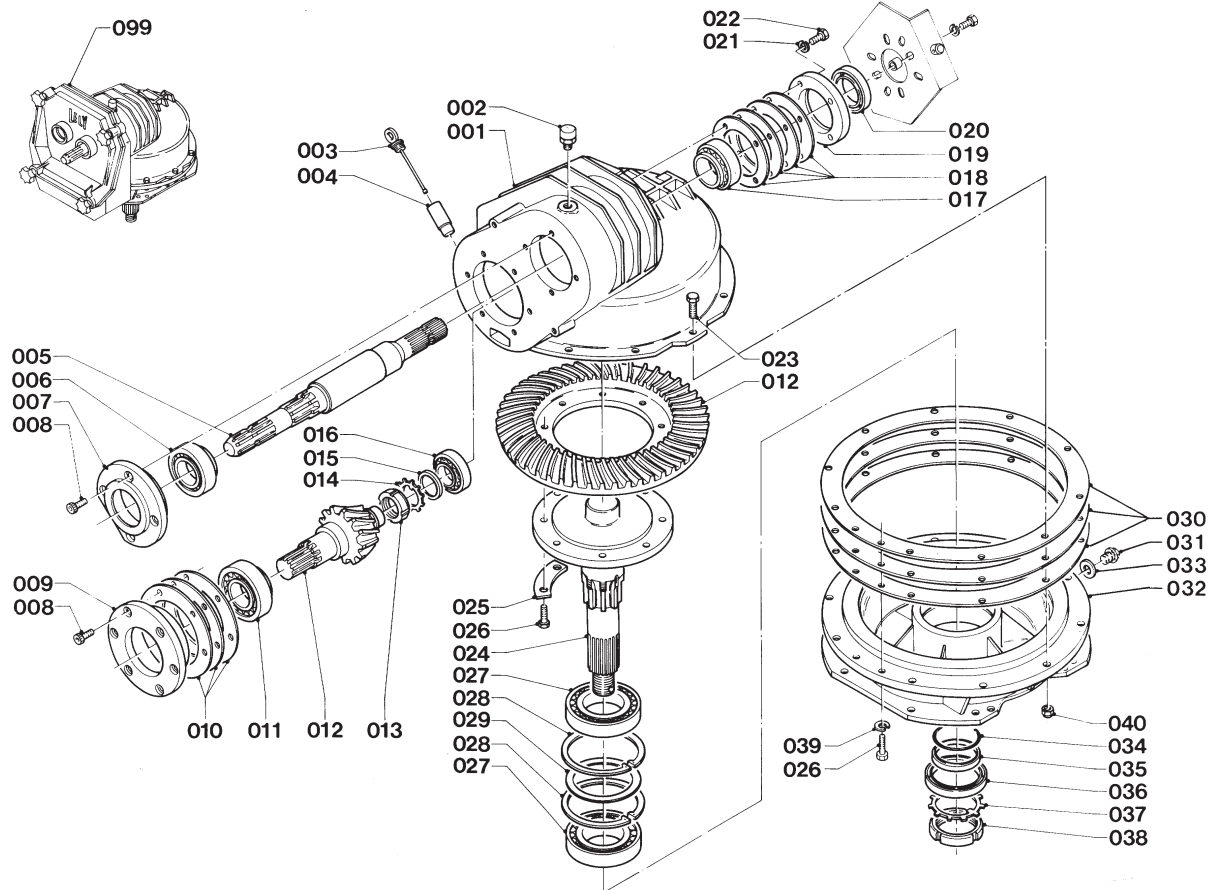
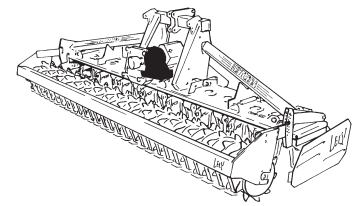


Koppelingsas  
PTO shaft  
Arbre de transmission  
Gelenkwelle

09/10

# LELY

LELYTERRA	type number type number numéro de type Typnummer	vanaf serienummer as from serial number après numéro de série ab Seriennummer
300 - 55	1.1655.0020.1 1.1655.0021.1	991 - 0501 10701 - 0501
400 - 55	1.1656.0010.1 1.1656.0011.1	998 - 0501 10506 - 0501



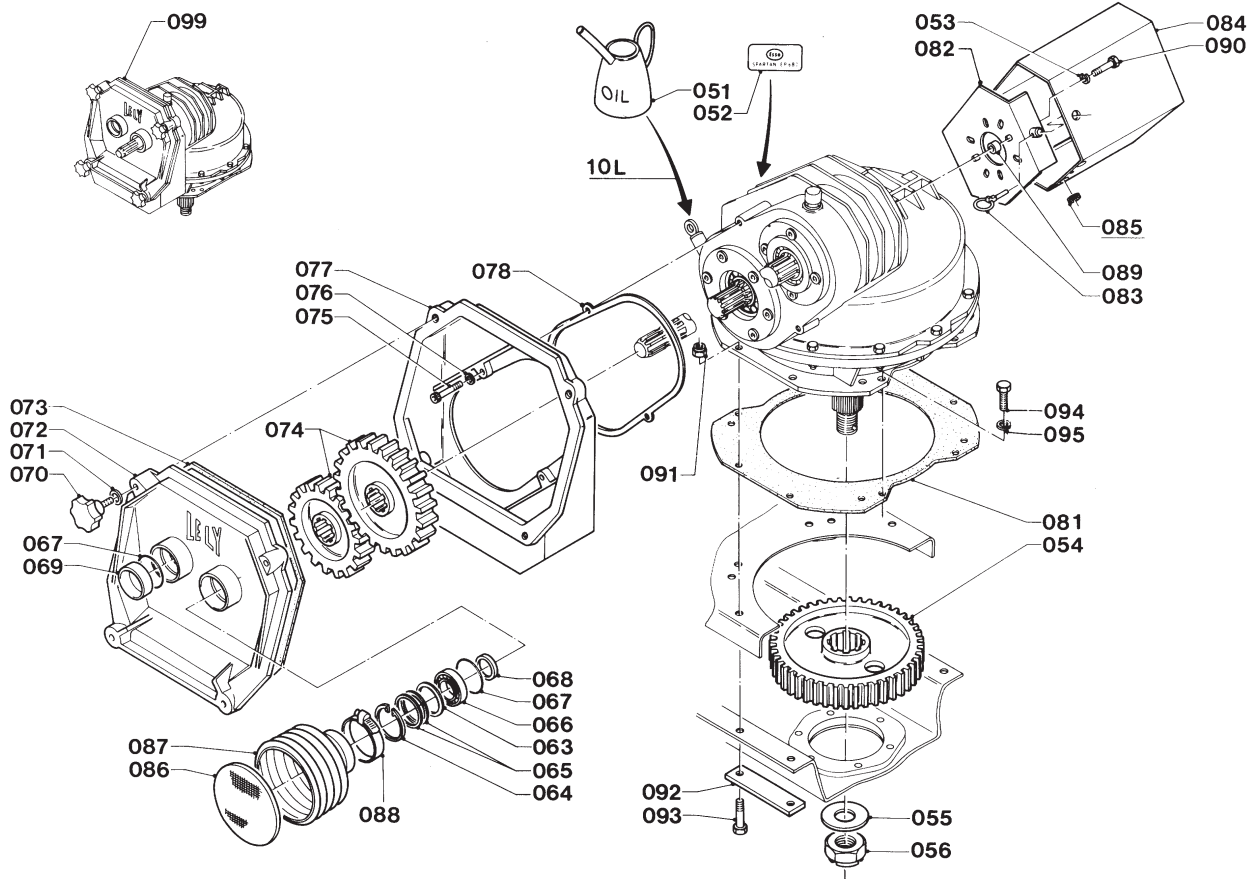
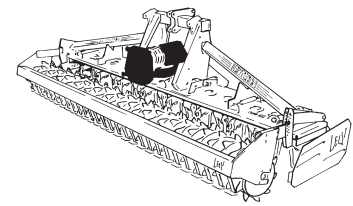
C101.03.00

REF.	ONDERDEELNR. PART NUMBER REFERENCE TEILNUMMER	AANTAL QUANTITY QUANTITE ANZAHL	
001	1.1655.0359.0	1	
002	9.1150.0009.6	1	3/8" SW 22
003	1.1607.0148.0	1	
004	1.1620.0122.0	1	
005	1.1655.0365.0	1	1.3/8" (21) - 1.3/8" (6)
006	9.1002.0032.2	1	33209
007	1.1645.0084.0	1	
008	9.1057.0008.0	10	M10x20 DIN 912-12.9
009	1.1611.0015.0	1	
010	1.1611.0058.1	1	[D+D]
011	9.1002.0023.0	1	32309-BJ2/CL7C
012	1.1632.0522.9	1	[T+T]
013	9.1035.0003.3	1	M40x1,5 KM 8
014	9.1118.0003.4	1	MB 8
015	1.1611.0050.0	1	
016	9.1002.0002.0	1	30207
017	9.1002.0022.6	1	32210
018	1.1704.0031.1	1	[D+D]
019	1.1624.0210.0	1	
020	9.1042.0029.1	1	50x80x13 B2SL [» «]
021	9.1048.0007*1	2	A10,5 DIN 125 [— ]
022	9.1113.0032*3	4	M10x40 DIN 931-8.8
023	9.1113.0054*4	10	M12x45 DIN 933-8.8
024	1.1655.0361.0	1	
025	1.1701.0167.0	4	

REF.	ONDERDEELNR. PART NUMBER REFERENCE TEILNUMMER	AANTAL QUANTITY QUANTITE ANZAHL	
026	9.1113.0050*0	10	M12x30 DIN 933-8.8
027	9.1002.0031.1	2	30214
028	9.1120.0018.3	2	125x4 DIN 472
029	9.1093.0082.3	~	100x125x0,2DIN988(max. 1x)
030	1.1655.0355.0	1	[D+D]
031	9.1131.0009.4	1	M16x1,5 DIN 910-5.8
032	1.1655.0362.0	1	
033	9.1137.0400.4	1	17x22x1,5 Cu [— ]
034	9.1043.0014.6	1	OR 70x3,00
035	1.1624.0215.0	1	
036	9.1042.0059.3	1	80x100x10 DB [» «]
037	9.1118.0009.3	1	MB 14
038	9.1035.0007.0	1	M70x2 KM 14
039	9.1121.0011*2	2	A12 DIN 127 [— ]
040	9.1030.0013*4	10	M12 DIN 985-8
099	1.1655.0352.1	1	= REF. 001-078

# LELY

LELYTERRA	type number type number numéro de type Typnummer	vanaf serienummer as from serial number après numéro de série ab Seriennummer
300 - 55	1.1655.0020.1 1.1655.0021.1	991 - 0501 10701 - 0501
400 - 55	1.1656.0010.1 1.1656.0011.1	998 - 0501 10506 - 0501



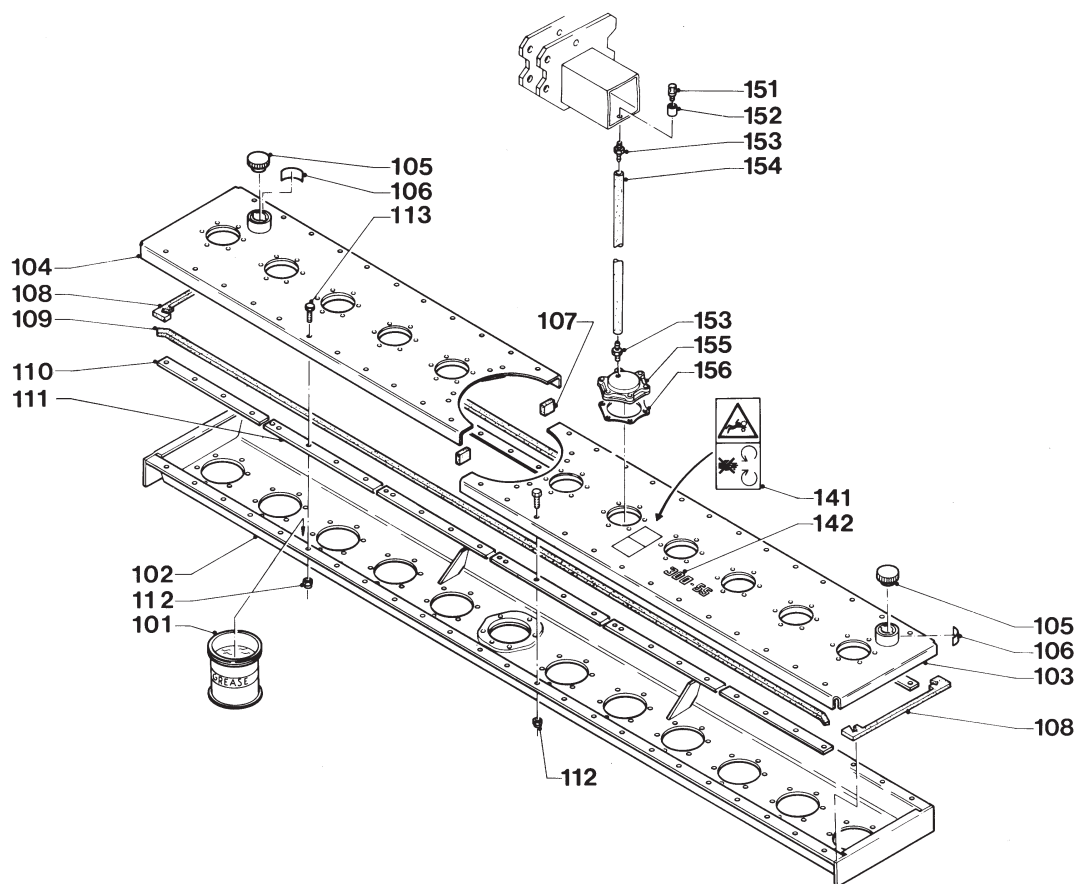
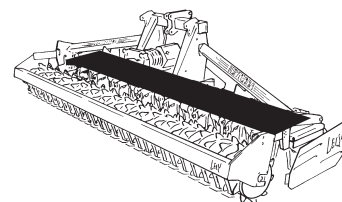
C102.04.00

REF.	ONDERDEELNR. PART NUMBER REFERENCE TEILNUMMER	AANTAL QUANTITY QUANTITE ANZAHL	
051	9.1171.0024.0	(10 L)	1 kg ESSO SPARTAN EP 680
	9.1171.0023.6	(10 L)	10 L ESSO SPARTAN EP 680
052	9.1170.0102.2	1	"ESSO SPARTAN EP 680"
053	9.1121.0004.2	2	A10 DIN 127 [—]
054	1.1655.0364.0	1	
055	1.1655.0229.0	1	(+ REF.320)
056	9.1031.0012.2	1	M36x1,5 DIN 937-17H (+ REF. 321)
063	9.1052.0005.2	~	S50x62x3 DIN 988
064	9.1120.0005.4	1	62x2,00 DIN 472
065	1.1624.0436.0	1	[D+D]
066	9.1001.0086.1	1	6007 2RS1-C3
067	9.1043.0005.4	2	OR 61,6x2,62
068	1.1645.0080.0	1	
069	1.1624.0445.0	1	
070	9.1141.0013.5	4	M12x45
071	9.1048.0012*6	4	A13 DIN 125 [—]
072	1.1624.0446.0	1	
073	#	1	1250 mm (1m= 9.1174.0023.3)
074	1.1699.0572.8	-	21/22 [T+T]
	1.1699.0574.8	-	23/20 [T+T]
	1.1699.0575.8	1	24/19 [T+T]
	1.1699.0576.8	-	25/18 [T+T]
	1.1699.0577.8	-	26/17 [T+T]
	1.1699.0578.8	-	27/16 [T+T]
075	9.1057.0019.4	2	M10x50 DIN 912-8.8
076	9.1048.0007*1	2	A10,5 DIN 125 [—]
077	1.1624.0447.0	1	
078	1.1624.0448.0	1	

REF.	ONDERDEELNR. PART NUMBER REFERENCE TEILNUMMER	AANTAL QUANTITY QUANTITE ANZAHL	
081	1.1655.0360.0	1	
082	1.1606.0441.0	1	
083	9.1123.0003*6	1	Ø6
084	1.1655.0910.8	1	(084= 084+085)
085	1.1603.0024.0	2	
086	1.1618.2116.0	1	
087	1.1632.1461.0	1	
088	9.1066.0002*6	1	Ø60-82
089	1.1606.0465.0	2	
090	9.1113.0032*3	2	M10x40 DIN 931-8.8
091	9.1030.0024*1	4	M12 DIN 985-10
092	1.1624.1477.0	2	
093	9.1113.0233*1	4	M12x55 DIN 931-10.9
094	9.1113.0259*6	8	M12x35 DIN 933-10.9
095	9.1048.0012*6	8	A13 DIN 125 [—]
099	1.1655.0352.1	1	= REF. 001-078

# LELY

LELYTERRA	type number type number numéro de type Typnummer	vanaf serienummer as from serial number après numéro de série ab Seriennummer
300 - 55	1.1655.0020.1 1.1655.0021.1	991 - 0501 10701 - 0501
400 - 55	1.1656.0010.1 1.1656.0011.1	998 - 0501 10506 - 0501



C103.04.00

REF.	ONDERDEELNR. PART NUMBER REFERENCE TEILNUMMER	AANTAL QUANTITY QUANTITE ANZAHL
------	--	--

300 400 LELYTERRA-55

101	9.1171.0031.0 9.1171.0030.6 9.1171.0029.5 9.1171.0028.4	25 34 - - - - - -	1 kg ESSO EHL 484 XC 5 kg ESSO EHL 484 XC 10 kg ESSO EHL 484 XC 180 kg ESSO EHL 484 XC
102	1.1655.0770.0 1.1656.0360.0	1 - - 1	12x Ø 16x Ø [x]
103	1.1655.0800.0 1.1656.0370.0	1 - - 1	6x Ø [R] 8x Ø [R][x]
104	1.1655.0790.0 1.1657.0250.0	1 - - 1	5x Ø [L] 7x Ø [L][x]
105	1.1606.0460.0	1 2	
106	9.1170.0264.3	1 2	"EHL 484 XC ESSO"
107	#	2 2	50 mm (1m= 9.1174.0034.0)
108	1.1645.1495.0	2 2	
109	# #	2 - - 2	2915 mm (1m= 9.1174.0038.4) 3935 mm (1m= 9.1174.0038.4)
110	1.1655.1490.0	4 4	[R]+[L]
111	1.1632.1472.0	8 12	
112	9.1030.0024*1	10 22	M12 DIN 985-10
113	9.1113.0155*0	10 22	M12x40 DIN 933-10.9

REF.	ONDERDEELNR. PART NUMBER REFERENCE TEILNUMMER	AANTAL QUANTITY QUANTITE ANZAHL
------	--	--

141	9.1170.0411.3	1	
142	9.1170.0308.5 9.1170.0312.2	1 1	"300-55" "400-55"
151	9.1150.0009.6	1	3/8" SW 22
152	9.1132.0004.5	1	G 3/8"
153	9.1137.0013.2	2	Ø 9 3/8"
154	#	1	675 mm (1m= 9.1065.0048.4)
155	1.1655.0859.0	1	
156	1.1655.0838.0	1	



# LELY

## LELYTERRA

300 - 55

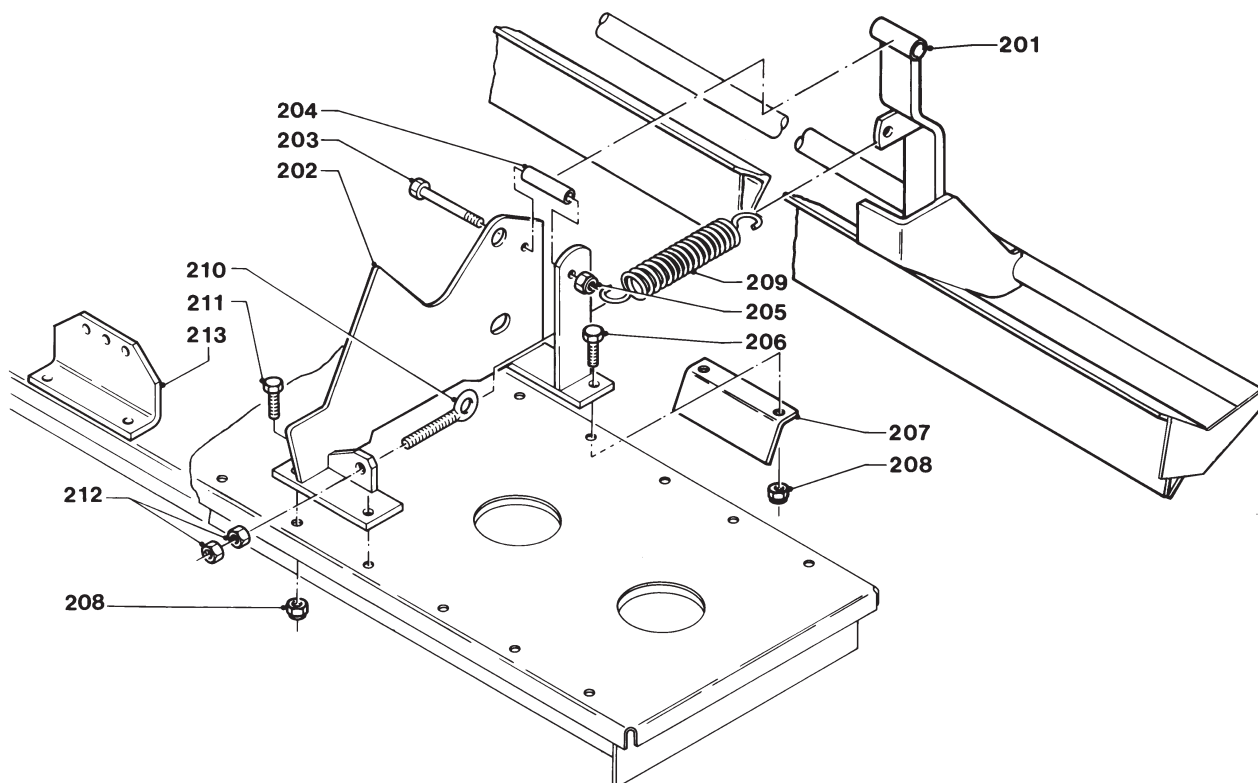
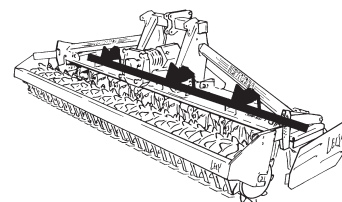
400 - 55

type number  
type number  
numéro de type  
Typnummer

1.1655.0020.1  
1.1655.0021.1  
  
1.1656.0010.1  
1.1656.0011.1

vanaf serienummer  
as from serial number  
après numéro de série  
ab Seriennummer

1002 - 0501  
10701 - 0501  
  
1001 - 0501  
10506 - 0501



C128.02.10

REF.	ONDERDEELNR. PART NUMBER REFERENCE TEILNUMMER	AANTAL QUANTITY QUANTITE ANZAHL
------	--	--

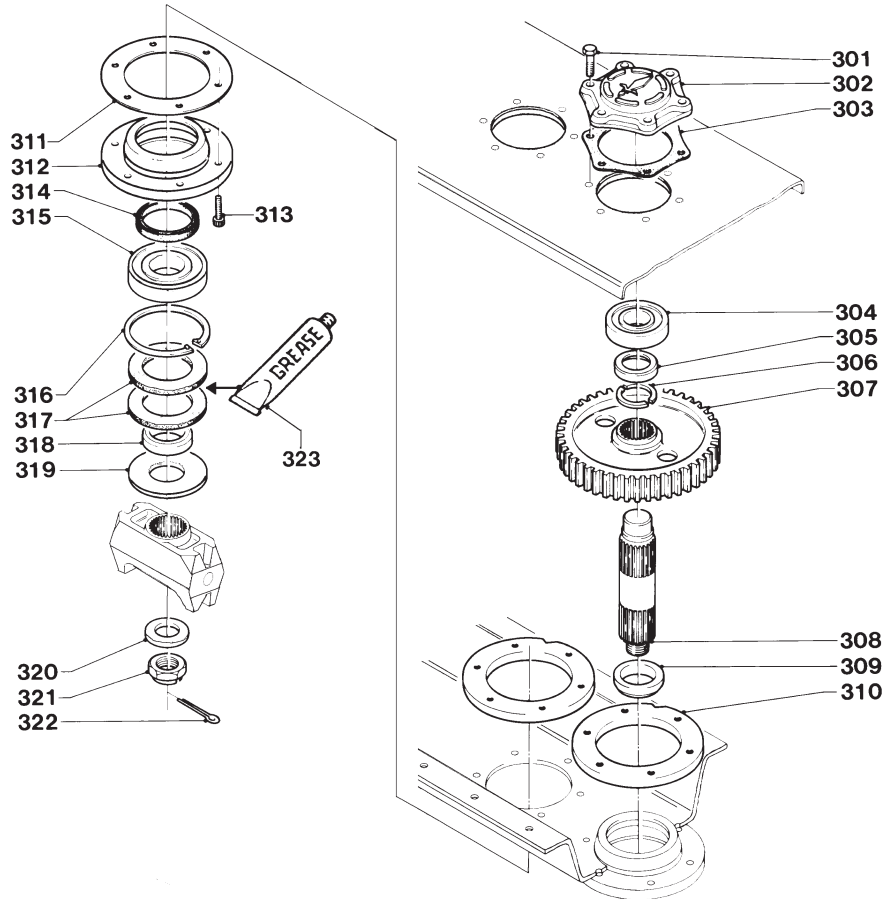
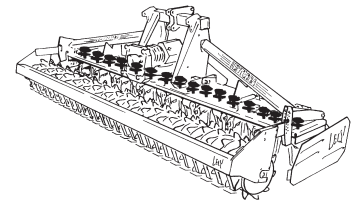
300 400 LELYTERRA-55

201	1.1655.0891.0	1	-
	1.1656.0252.0	-	1
202	1.1655.0562.0	1	1 [R]
	1.1646.0362.0	-	1 [x]
	1.1655.0572.0	1	1 [L][x]
203	9.1113.0144*3	2	3 M10x100 DIN 931-8.8
204	1.1633.1497.0	2	3
205	9.1030.0004*2	2	3 M10 DIN 985-8
206	9.1113.0233*1	4	8 M12x55 DIN 931-10.9
207	1.1655.1491.0	3	3
208	9.1030.0024*1	8	12 M12 DIN 985-10
209	1.1633.1496.0	2	3
210	1.1633.1495.0	2	3
211	9.1113.0155*0	4	4 M12x40 DIN 933-10.9
212	9.1029.0008*0	4	6 M12 DIN 934-8
213	1.1646.1485.0	-	1

REF.	ONDERDEELNR. PART NUMBER REFERENCE TEILNUMMER	AANTAL QUANTITY QUANTITE ANZAHL
------	--	--

# LELY

LELYTERRA	type number type number numéro de type Typnummer	vanaf serienummer as from serial number après numéro de série ab Seriennummer
300 - 55	1.1655.0020.1 1.1655.0021.1	991 - 0501 10701 - 0501
400 - 55	1.1656.0010.1 1.1656.0011.1	998 - 0501 10506 - 0501



C105.02.10

REF.	ONDERDEELNR. PART NUMBER REFERENCE TEILNUMMER	AAANTAL QUANTITY QUANTITE ANZAHL
------	--	---

300 400 LELYTERRA-55

301	9.1113.0252*6	66 90	M12x45 DIN 931-10.9	
302	1.1655.0839.0	10 14	(+ REF. 155)	
303	1.1655.0838.0	10 14	(+ REF. 156)	
304	9.1001.0111.5	11 15	6309 2Z-C3-MT33B	
305	1.1655.0239.0	11 15		
306	1.1655.0238.0	22 30		
307	1.1655.0235.0	11 15		
308	1.1655.0831.0	9 15		
	1.1655.0830.0	2 -	[x] [R]+[L]	
309	1.1655.0837.0	11 15		
	1.1655.0868.0	1 1	[x]	
310	1.1655.0836.0	11 15		
311	1.1655.0835.0	12 16		
312	1.1655.0834.0	11 15		
	1.1655.0869.0	1 1	[x]	
313	9.1057.0014.6	72 96	M12x35 DIN 912-12.9	
314	9.1042.0072.2	11 15	75x105x13 DB	[> <]
	9.1042.0073.3	1 1	100x120x10 DB	[> <]
315	9.1001.0112.6	12 16	6311 2RS1-C3-MT33B	
316	9.1120.0017.2	11 15	120x4,00 DIN 472	
317	9.1106.0024.2	24 32	75x120x6,35	
318	1.1655.0833.0	12 16		
319	1.1655.0832.0	1 16		

REF.	ONDERDEELNR. PART NUMBER REFERENCE TEILNUMMER	AAANTAL QUANTITY QUANTITE ANZAHL
------	--	---

300 400 LELYTERRA-55

320	1.1655.0229.0	11 15	(+ REF. 055)
321	9.1031.0012.2	11 15	M36x1,5 DIN 937-17H (+ REF.056)
322	9.1072.0011.2	12 16	6,3x63 DIN 94
323	BEACON	12 16	(1x= 0,055kg)



# LELY

## LELYTERRA

300 - 55

type number  
type number  
numéro de type  
Typnummer

1.1655.0020.1  
1.1655.0021.1

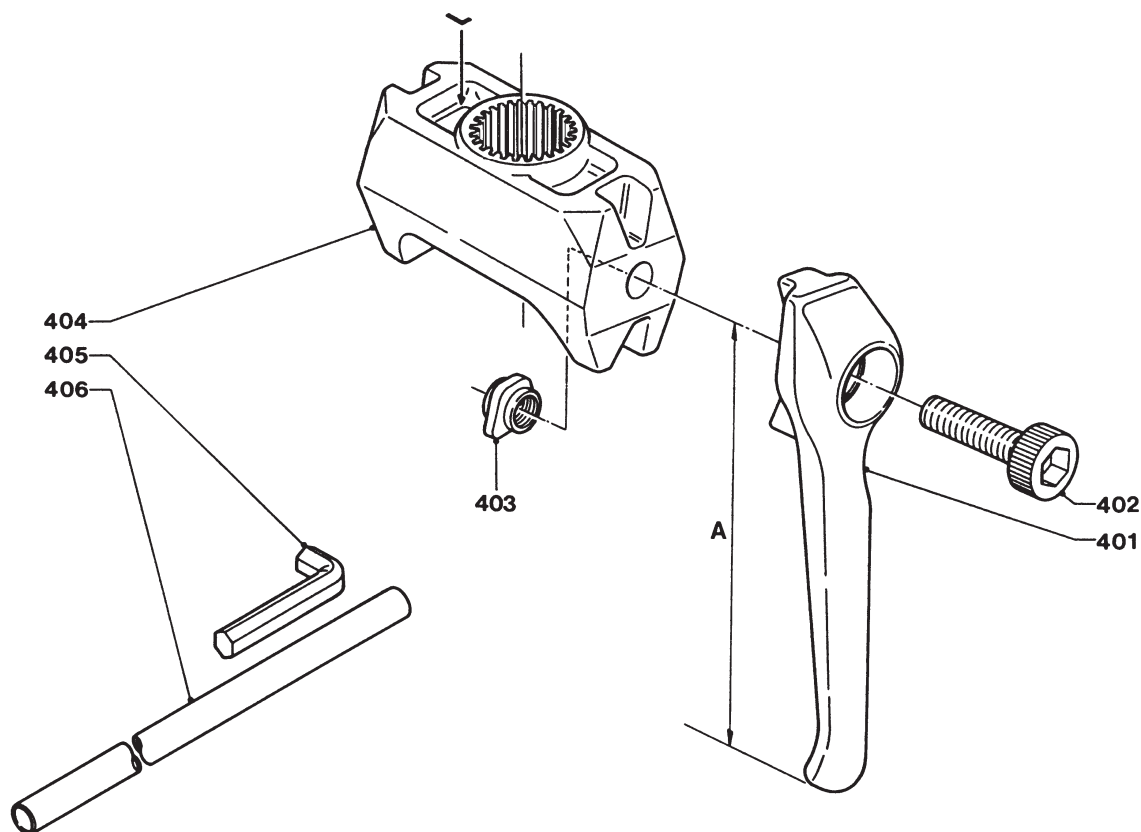
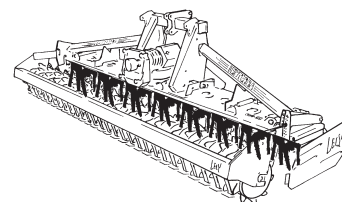
vanaf serienummer  
as from serial number  
après numéro de série  
ab Seriennummer

10305 - 0659  
10701 - 0501

400 - 55

1.1656.0010.1  
1.1656.0011.1

10306 - 0682  
10506 - 0501



C106.03.00

REF.	ONDERDEELNR. PART NUMBER REFERENCE TEILNUMMER	AANTAL QUANTITY QUANTITE ANZAHL	
------	--	--	--

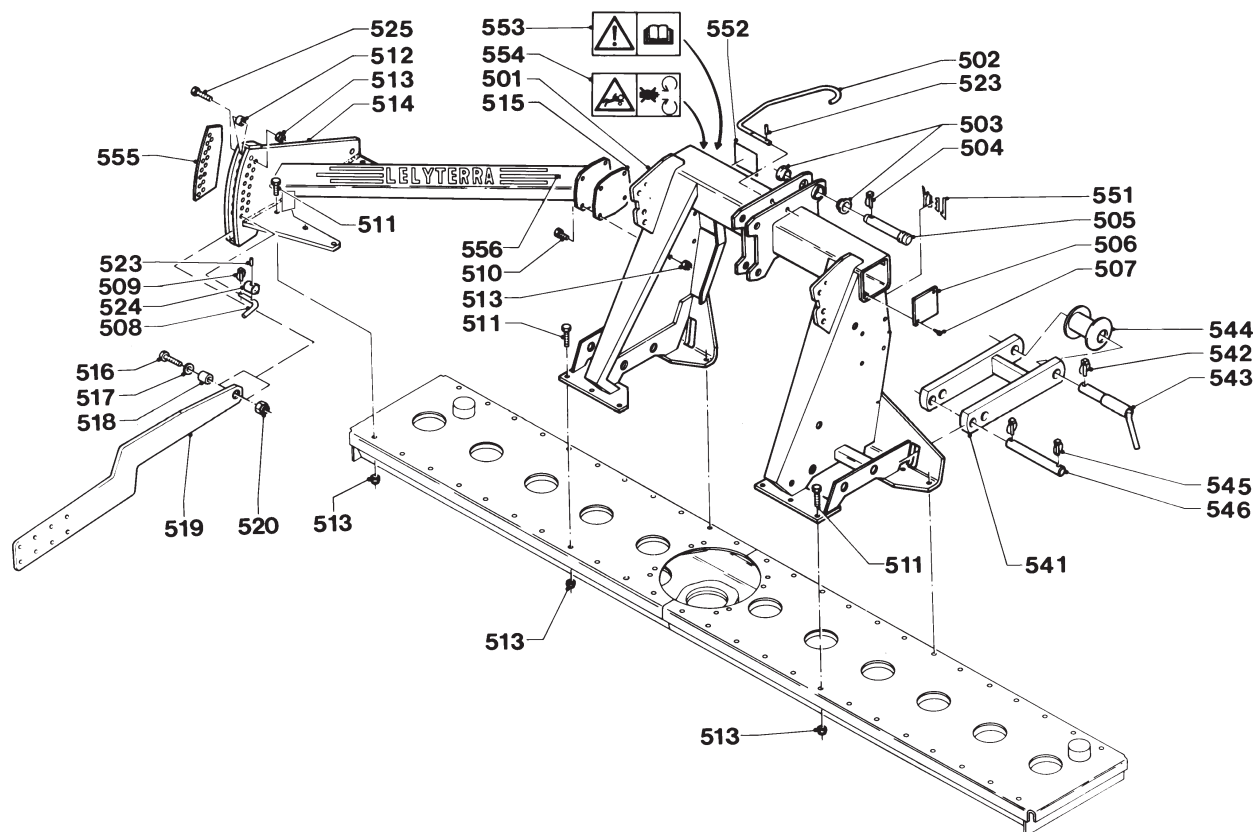
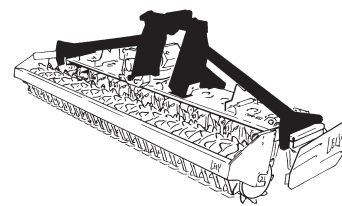
300 400 LELYTERRA-55

401	1.1699.0111.0	(12) (16)	[LD]	A= 296 mm
	1.1699.0112.0	(12) (16)	[RD][x]	Druppeltand Club tines Dents a goutter Tropfenzinken
401	1.1699.0122.0	(12) (16)	[LD][x]	A= 296 mm
	1.1699.0123.0	(12) (16)	[RD][x]	Mestanden Blade tines Dents couteaux Messerzinken
401	1.1699.0124.0	(12) (16)	[LD]	A= 336 mm
	1.1699.0125.0	(12) (16)	[RD][x]	Lange tanden Long tines Dents longues Lange Zinken
402	9.1057.0035.6	24 32		M20x70 DIN 912-12.9
403	1.1645.0419.0	24 32		
404	1.1655.0245.0	6 8	[LD]	
	1.1655.0257.0	6 8	[RD][x]	
405	9.1074.0020.2	1 1		SLW 17
406	9.9002.0002.0	1 1		

REF.	ONDERDEELNR. PART NUMBER REFERENCE TEILNUMMER	AANTAL QUANTITY QUANTITE ANZAHL	
------	--	--	--

# LELY

LELYTERRA	type number type number numéro de type Typnummer	vanaf serienummer as from serial number après numéro de série ab Seriennummer
300 - 55	1.1655.0021.1	10701 - 0501
400 - 55	1.1656.0011.1	10506 - 0501



C107.05.30

REF.	ONDERDEELNR. PART NUMBER REFERENCE TEILNUMMER	AANTAL QUANTITY QUANTITE ANZAHL
------	--	--

300 400 LELYTERRA-55

501	1.1655.0431.0	1 1
502	1.1606.4187.0	1 1
503	1.1636.2079.0	2 -
504	9.1123.0002*5	1 1 Ø11
505	9.1088.0004*0	1 - 25 -105
	9.1088.0008*4	- 1 32 -125
506	1.1624.1482.0	2 2
507	9.1064.0002.1	4 4 4,8x13 DIN 7976C
508	1.1659.1496.0	2 2
509	9.1123.0003*6	2 2 Ø6
510	9.1113.0259*6	8 8 M12x35 DIN 933-10.9
511	9.1113.0233*1	18 18 M12x55 DIN 931-10.9
512	1.1645.2392.0	2 2
513	9.1030.0024*1	28 28 M12 DIN 985-10
514	1.1655.0482.0	1 - [L]
	1.1656.0242.0	- 1 [L]
514	1.1655.0462.0	1 - [R][x]
	1.1656.0232.0	- 1 [R][x]
515	1.1655.1493.0	(2) (2)
516	9.1113.0082*4	2 2 M16x65 DIN 931-8.8
517	9.1048.0043*2	2 2 A17 DIN 7349
518	1.1655.0604.0	2 2
519	1.1655.0605.0	2 - 25 mm= Ø430/Ø440/Ø500
	1.1655.0605.0	- 2 25 mm= Ø500
	1.1656.0649.0	- 2 25 mm= Ø520

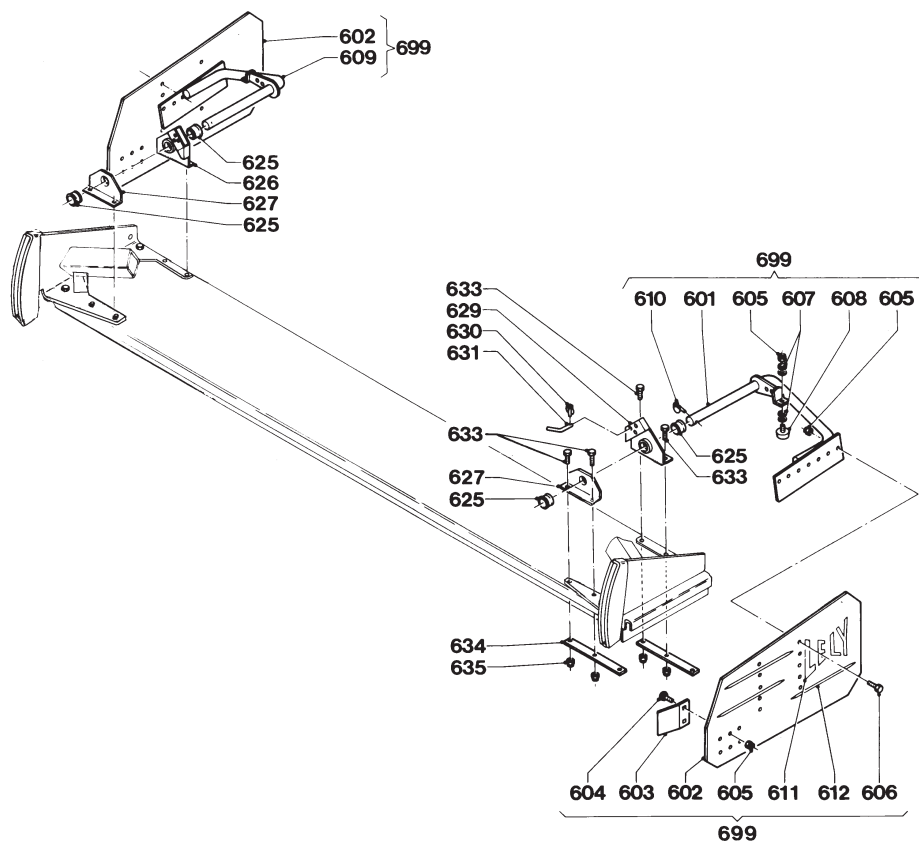
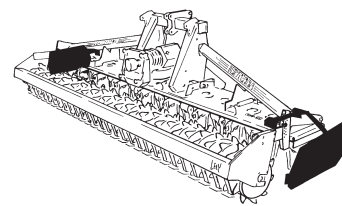
REF.	ONDERDEELNR. PART NUMBER REFERENCE TEILNUMMER	AANTAL QUANTITY QUANTITE ANZAHL
------	--	--

300 400 LELYTERRA-55

520	9.1030.0014*5	2 2 M16 DIN 985-8
523	9.1070.0017.3	4 4 Ø6x30 DIN 1481
524	1.1659.1495.0	2 -
525	9.1113.0251*5	2 2 M12x70 DIN 931-10.9
541	1.1655.0900.0	2 2
542	9.1123.0002*5	2 2 Ø11
543	1.1655.0530.0	2 2 Ø28-36
544	1.1655.0680.0	(2) (2)
545	9.1123.0004*0	4 4 Ø8
546	1.1655.1492.0	2 2
551	9.1170.0200.2	1 1 "LELY"
552	9.1170.0211.6	1 1 "Ø9/1"
553	9.1170.0408.0	1 1
554	9.1170.0407.6	1 1
555	9.1170.0275.0	1 1 "ABCD" [L]
	9.1170.0276.1	1 1 "ABCD" [R][x]
556	9.1170.0290.1	1 1 "LELYTERRA" [L]
	9.1170.0291.2	1 1 "LELYTERRA" [R][x]

# LELY

LELYTERRA	type number type number numéro de type Typnummer	vanaf serienummer as from serial number après numéro de série ab Seriennummer
300 - 55	1.1655.0021.1	10701 - 0501
400 - 55	1.1656.0011.1	10506 - 0501



C108.02.10

REF.	ONDERDEELNR. PART NUMBER REFERENCE TEILNUMMER	AAANTAL QUANTITY QUANTITE ANZAHL
------	--	---

300 400 LELYTERRA-55

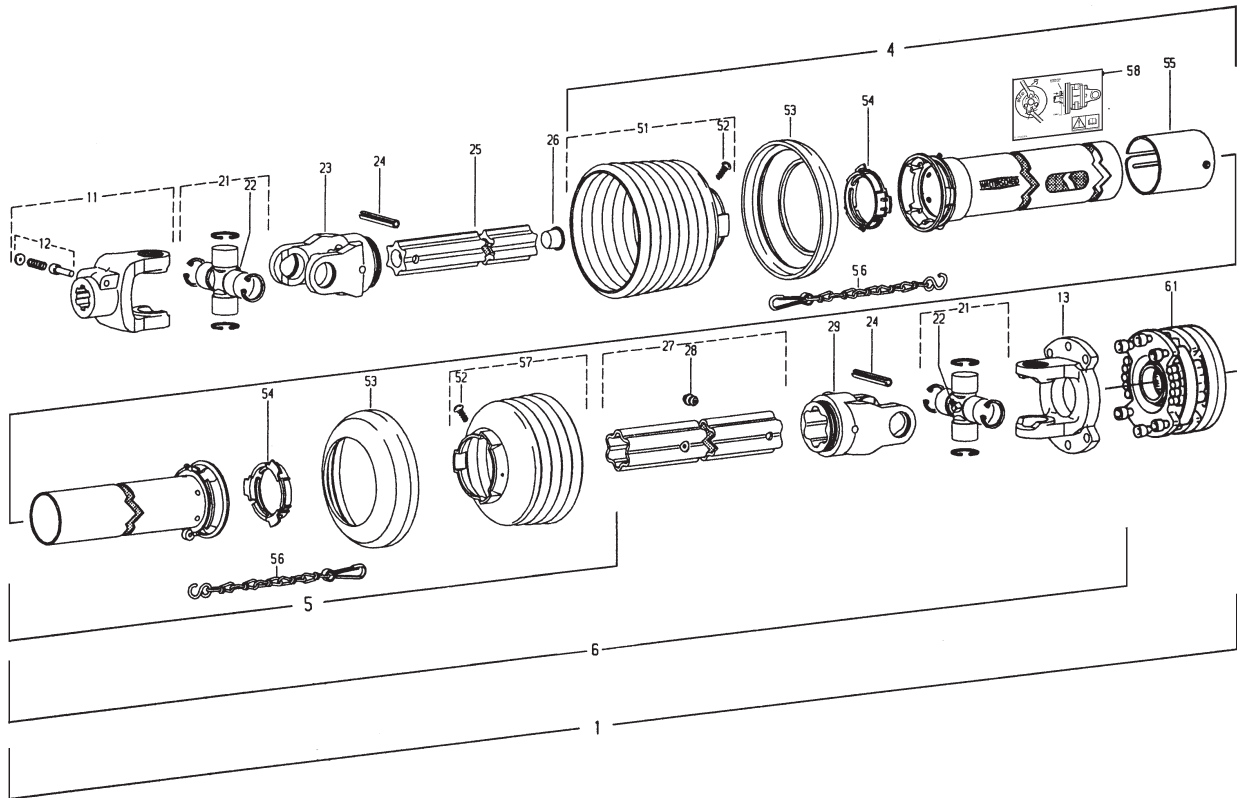
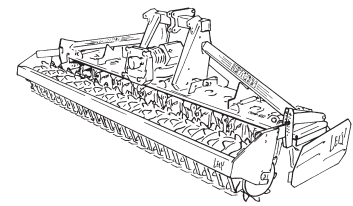
601	1.1625.2281.0	1	1	[R]
602	1.1645.0156.0	2	2	
603	1.1645.0157.0	2	2	
604	9.1058.0027*4	4	4	M10x25 DIN 603
605	9.1030.0004*2	10	10	M10 DIN 985-8
606	9.1113.0120*0	4	4	M10x30 DIN 933-8.8
607	9.1048.0007*1	8	8	A10,5 DIN 125
608	9.1105.0011.4	2	2	M10x28
609	1.1625.2271.0	1	1	[L]
610	9.1123.0004.1	2	2	Ø8
611	9.1170.0113.6	2	2	"LELY"
612	9.1170.0179.2	6	6	
625	1.1636.1484.0	4	4	
626	1.1655.0492.0	1	-	[L]
		-	1	= 627[x]
627	1.1655.1483.0	2	4	
629	1.1655.0502.0	1	-	[R]
		-	1	= 627[x]
630	9.1123.0003*6	2	-	Ø6
631	4.1011.0033.0	2	-	
633	9.1113.0233*1	8	8	M12x55 DIN 931-10.9
634	1.1624.1485.0	4	4	
635	9.1030.0024*1	8	8	M12 DIN 985-10

REF.	ONDERDEELNR. PART NUMBER REFERENCE TEILNUMMER	AAANTAL QUANTITY QUANTITE ANZAHL
------	--	---

699 1.1625.2260.0 1 = REF. 601-612 [R]+[L]

# LELY

LELYTERRA	type number type number numéro de type Typnummer	vanaf serienummer as from serial number après numéro de série ab Seriennummer
300 - 55	1.1655.0021.1	10701 - 0501
400 - 55	1.1656.0011.1	10506 - 0501



Cw001.07.20

REF.	ONDERDEELNR. PART NUMBER REFERENCE TEILNUMMER	AANTAL QUANTITY QUANTITE ANZAHL	
1	0.9001.3930.0	1	W2500-SD25-860 - 1000/min. = REF. 11-61
4	85.255	1	SDH25-A620
5	85.204	1	SDH25-J550
6	9.1154.0066.3	1	W2500-SD25-860 = REF. 11-58
11	36.10.02	1	1.3/8" (21)
12	33.91.07	1	AGRASET 101
13	0.9001.1198.0	1	
21	36.00.00	2	BM 8x1
22	63.27.00	2	RG2500-S4
23	36.13.100	1	Ø10x90 DIN 1481
24	61.05.12	2	S4GA-700
25	75.44.98	1	
26	68.13.22	1	25 S
27	75.45.114	1	S5-695
28	63.33.00	1	4,6
29	36.14.100	1	RG2500-S5
51	85.26.07	1	n= 7
52	60.15.00	2	4x10
53	82.85.03	2	
54	82.83.04	2	
55	80.63.112	1	
56	82.36.03	2	
57	85.26.05	1	n= 5
58	9.1170.0337.6	1	
61	0.9001.1630.0 0.9001.1148.1	1 -	LELYMATIC BA9-1.3/8" (21) (=10x Ø9-1) [x]

REF.	ONDERDEELNR. PART NUMBER REFERENCE TEILNUMMER	AANTAL QUANTITY QUANTITE ANZAHL	
1	0.9001.3934.0	1	W2500-SD25-860 - 1000/min. = REF. 11-61
4	85.255	1	SDH25-A620
5	85.204	1	SDH25-J550
6	9.1154.0067.4	1	W2500-SD25-860 = REF. 11-58
11	36.10.00	1	1.3/8" (6)
12	33.91.07	1	AGRASET 101
13	0.9001.1198.0	1	
21	36.00.00	2	BM 8x1
22	63.27.00	2	RG2500-S4
23	36.13.100	1	Ø10x90 DIN 1481
24	61.05.12	2	S4GA-700
25	75.44.98	1	
26	68.13.22	1	25 S
27	75.45.114	1	S5-695
28	63.33.00	1	4,6
29	36.14.100	1	RG2500-S5
51	85.26.07	1	n= 7
52	60.15.00	2	4x10
53	82.85.03	2	
54	82.83.04	2	
55	80.63.112	1	
56	82.36.03	2	
57	85.26.05	1	n= 5
58	9.1170.0337.6	1	
61	0.9001.1630.0 0.9001.1148.1	1 -	LELYMATIC BA9-1.3/8" (21) (=10x Ø9-1) [x]

# LELY

## LELYTERRA

type number type number numéro de type Typnummer	vanaf serienummer as from serial number après numéro de série ab Seriennummer
300 - 55	1.1655.0021.1
400 - 55	1.1656.0011.1

300 - 55

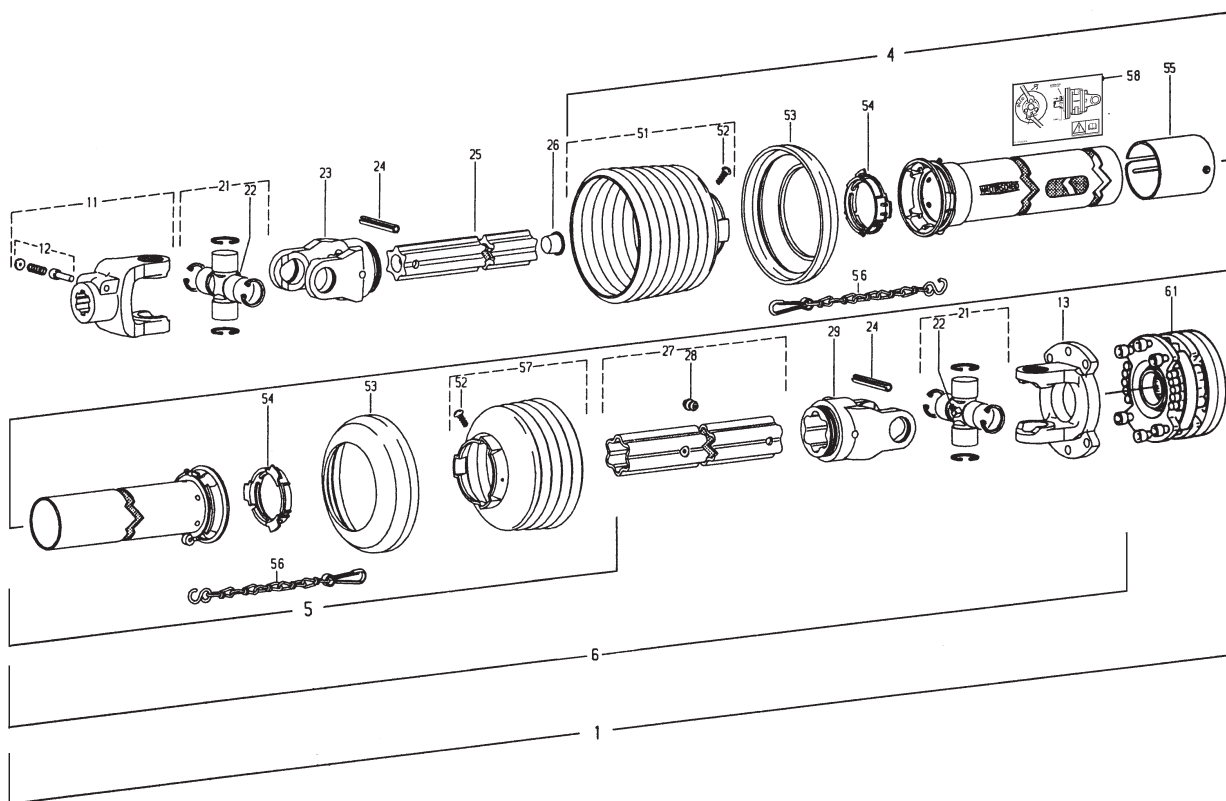
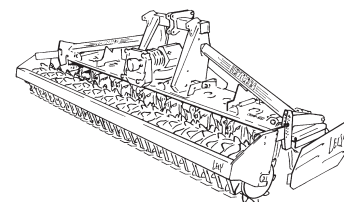
400 - 55

1.1655.0021.1

1.1656.0011.1

10701 - 0501

10506 - 0501



Cw001.07.20

REF.	ONDERDEELNR. PART NUMBER REFERENCE TEILNUMMER	AANTAL QUANTITY QUANTITE ANZAHL
------	--	--

1	0.9001.3937.0	1	W2500-SD25-860 - 1000/min. = REF. 11-61
4	85.255	1	SDH25-A620
5	85.204	1	SDH25-J550
6	9.1154.0206.3	1	W2500-SD25-860 = REF. 11-58
11	36.18.02	1	1.3/4" (20)
12	33.93.02	1	AGRASET 102
13	0.9001.1198.0	1	
21	36.00.00	2	
22	63.27.00	2	BM8x1
23	36.13.100	1	RG2500-S4
24	61.05.12	2	Ø10x90 DIN 1481
25	75.44.98	1	S4GA-700
26	68.13.22	1	25 S
27	75.45.116	1	S5-695
28	63.33.00	1	4,6
29	36.14.100	1	RG2500-S5
51	85.26.07	1	n= 7
52	60.15.00	2	4x10
53	82.85.03	2	
54	82.83.04	2	
55	80.63.112	1	
56	82.36.03	2	
57	85.26.05	1	n= 5
58	9.1170.0337.6	1	
61	0.9001.1630.0 0.9001.1148.1	1 -	LELYMATIC BA9-1.3/8" (21) (=10x Ø9-1) [x]

REF.	ONDERDEELNR. PART NUMBER REFERENCE TEILNUMMER	AANTAL QUANTITY QUANTITE ANZAHL
------	--	--